

Sotheby's EST. 1744



FINE JEWELS

LONDON 20 SEPTEMBER 2017



FRONT COVER
LOT 182 (DETAIL)
BACK COVER
LOT 297
THIS PAGE
LOTS 15, 2, 16 & 1

FINE
JEWELS





FINE JEWELS

AUCTION IN LONDON
20 SEPTEMBER 2017
SALE L17058

SESSION ONE: 10 AM
SESSION TWO: 2 PM

EXHIBITION

Saturday 16 September
12 noon-5 pm

Sunday 17 September
12 noon-5 pm

Monday 18 September
9 am-4.30 pm

Tuesday 19 September
9 am-4.30 pm

34-35 New Bond Street
London, W1A 2AA
+44 (0)20 7293 5000
sothebys.com



BIDNOW
LIVE ONLINE BIDDING

Sotheby's EST. 1744

SPECIALISTS FOR THIS SALE



David Bennett
Worldwide Chairman
International Jewellery Division
+41 22 908 4842
david.bennett@sothebys.com



Daniela Mascetti
Senior Specialist, International
Worldwide Head of Scholarship
+41 22 908 4815
daniela.mascetti@sothebys.com



Brett O'Connor
Senior Specialist, International
+41 22 908 4845
brett.o'connor@sothebys.com



Jessica Wyndham
Head of Department, London
+44 20 7293 6409
jessica.wyndham@sothebys.com



Andres White Correal
Director of International Business
Development
+44 20 7293 6409
andres.whitecorreal@sothebys.com



Justin Roberts
Specialist, London
+44 20 7293 6409
justin.roberts@sothebys.com



Kristian Spofforth
Specialist, London
+44 20 7293 6409
kristian.spofforth@sothebys.com



Johanna Seehuusen
Cataloguer, London
+44 20 7293 6409
johanna.seehuusen@sothebys.com



Samuel Hug
Junior Cataloguer, London
+44 20 7293 6409
samuel.hug@sothebys.com



Emma Paleschi
Head of Jewellery Business, Europe
+44 20 7293 6409
emma.paleschi@sothebys.com



Julia Castelli
Sales Director
+44 20 7293 6640
julia.castelli@sothebys.com

SPECIALISTS AND AUCTION ENQUIRIES

For further information on lots in this auction please contact any of the specialists listed below.

SALE NUMBER
L17058 "BLU"

BIDS DEPARTMENT
+44 (0)20 7293 5283
FAX +44 (0)20 7293 6255
bids.london@sothebys.com

Telephone bid requests should be received 24 hours prior to the sale. This service is offered for lots with a low estimate of £3,000 and above.

PRIVATE CLIENT GROUP
+44 (0)20 7293 5785
EUROPE
Beatriz Quiralte
beatriz.quiralte@sothebys.com
Fergus Duff
fergus.duff@sothebys.com

ASIA
Shu Zheng
shu.zheng@sothebys.com

MENA
Katia Nounou
katia.nounou@sothebys.com

INDIA
Gauri Agarwal
gauri.agarwal@sothebys.com
Milaap Patel
milaap.patel@sothebys.com

RUSSIA & CIS
Alina Davey
alina.davey@sothebys.com
Irina Kronrod
irina.kronrod@sothebys.com
Lilija Sitnika
lilija.sitnika@sothebys.com

SALE ADMINISTRATOR
Arabella Toler
arabella.toler@sothebys.com
+44 (0)20 7293 5504
FAX +44 (0)20 7293 5937

POST SALE SERVICES
Maxwell Maisey
Post Sale Manager
FOR PAYMENT, DELIVERY
AND COLLECTION
+44 (0)20 7293 5220
FAX +44 (0)20 7293 5910
ukpostsaleservices@sothebys.com

PRESS ENQUIRIES
Hanae Rebelo
+44 (0)20 7293 5522
hanae.rebelo@sothebys.com

CATALOGUE PRICE
£25 at the gallery

FOR SUBSCRIPTIONS CALL
+44 (0)20 7293 5000
for UK & Europe
+1 212 606 7000 USA

CONDITION REPORTS
Sotheby's Jewellery department is pleased to offer to potential purchasers Condition Reports of the lots in this catalogue.

A Condition Report is an opinion describing in more depth the lot with regards to, but not limited to, the general condition, quality of stones and/or other relevant information.

LONDON
Johanna Seehuusen
Samuel Hug
LondonJewels@sothebys.com
+44 207 293 6409
Fax +41 22 908 5964

Conditions reports are also available on our website sothebys.com



Important Notices Please note that all lots are sold subject to our Conditions of Business for Buyers and Authenticity Guarantee, which are set forth at the back of this catalogue and Conditions of Business for Sellers, which are available from Sotheby's offices on request.

For all lots marked with a ◊, △, □ or ⊞ please refer to the Guide for Prospective Buyers.

For all lots marked * please refer to the **Important Notices** at the back of this catalogue.

References in the catalogue descriptions to certificates or reports issued by gemmological laboratories are included only for the information of bidders, and Sotheby's accepts no responsibility for the accuracy,

terms or information contained in such certificates or reports. Please also note that Laboratories may differ in their assessment of a gemstone (including its origin and presence, type and extent of treatments) and their certificates or reports may contain different results.

Various manufacturers may not issue certificates of authenticity upon request. Except as specifically noted in the catalogue, Sotheby's will not be required to furnish the purchaser with a certificate of authenticity from the manufacturer at any time. Unless the requirements for a rescission of the sale under the Terms of Guarantee are satisfied, the failure of a manufacturer to issue a certificate will not constitute grounds to rescind the sale.

LONDON ROCKS®
A REGISTERED TRADEMARK OF SOTHEBY'S



CONTENTS

3	AUCTION INFORMATION
5	SPECIALISTS AND AUCTION ENQUIRIES
8	SESSION ONE: LOTS 1–147
60	SESSION TWO: LOTS 148–297
121	ABSENTEE BID FORM
122	BUYING AT AUCTION
124	EXPLANATION OF SYMBOLS VAT INFORMATION FOR BUYERS
125	CONDITIONS OF BUSINESS FOR BUYERS
127	WAREHOUSE, STORAGE, COLLECTION INFORMATION
128	AUTHENTICITY GUARANTEE IMPORTANT NOTICES
129	GLOSSARY OF TERMS
130	INTERNATIONAL DEPARTMENTS
131	SOTHEBY'S EUROPE





THIS PAGE
LOTS 47, 54, 56 & 65

SESSION ONE

LONDON
WEDNESDAY
20 SEPTEMBER 2017
10 AM

LOTS 1-147





1



2

1

Diamond brooch, late 19th century

Designed as a crescent moon, set with cushion-shaped diamonds.

£ 4,000-6,000 € 4,450-6,700 US\$ 5,300-8,000

2

Ruby and diamond brooch, circa 1900

Naturalistically modelled as a salamander, pavé-set with circular-cut and cushion-shaped diamonds and accented with cabochon ruby eyes. *French import marks.*

£ 8,000-12,000 € 8,900-13,300 US\$ 10,600-15,900



3

PROPERTY FROM A BRITISH PRIVATE COLLECTION

Diamond and cat's eye chrysoberyl pendant necklace, second half 19th century

Designed as a graduated line of cut-down collet set cushion-shaped diamonds suspending a detachable pendant set with a cat's-eye chrysoberyl, *length approximately 320mm, accompanied by additional links.*

£ 26,000-36,000 € 28,800-39,900 US\$ 34,500-47,700



4

PROPERTY FROM A BRITISH PRIVATE COLLECTION

Diamond pendant brooch, late 19th century

Of scrolled foliate design set with circular-cut, rose and cushion-shaped diamonds, to a foliate diamond surmount, *fitted case.*

£ 5,000-7,000 € 5,600-7,800 US\$ 6,700-9,300



5

5

Diamond brooch, late 19th century

Designed as a floral spray, set with foiled back rose diamonds, the flowers mounted *en tremblant*.

£ 4,000-6,000 € 4,450-6,700 US\$ 5,300-8,000

6

Diamond ring

Claw-set with a brilliant-cut diamond weighing 6.22 carats, size L.

£ 26,000-36,000 € 28,800-39,900 US\$ 34,500-47,700



6



7

7

Sapphire and diamond brooch, circa 1870

Designed as a peacock feather set throughout with circular-cut and cushion-shaped diamonds, the 'eye' claw-set with an oval sapphire, *three diamonds deficient*.

LITERATURE

Cf.: David Bennett and Daniela Mascetti, *Understanding Jewellery*, Suffolk, 2014, p. 172, pl. 203, for a brooch of identical design, with a diamond in place of the central sapphire.

£ 3,000-4,000 € 3,350-4,450 US\$ 4,000-5,300



8

Diamond demi-parure, late 19th century

Comprising: a necklace and pair of earrings of foliate design, set with circular-cut and rose diamonds, to knife edge linking accented with similarly cut diamonds, *necklace length approximately 395mm; earrings with post and butterfly fittings, fitted case.*

£ 10,000-15,000 € 11,100-16,700 US\$ 13,300-19,900

9

Emerald and diamond ring

The collet-set step-cut emerald within a brilliant-cut diamond surround, to a pierced gallery and single-cut diamond shoulders, *size L.*

Accompanied by a gemmological report.

£ 8,000-12,000 € 8,900-13,300 US\$ 10,600-15,900

10

Yellow sapphire and diamond ring

Set with a cushion-shaped yellow sapphire, within a millegrain single-cut diamond frame, *size N^{1/2}.*

Accompanied by a gemmological report.

£ 8,000-12,000 € 8,900-13,300 US\$ 10,600-15,900



11



13



12



14

11

Diamond brooch, late 19th century

Designed as a bee, the body highlighted with a circular-cut diamond of greenish yellow tint weighing 1.58 carats, with cabochon ruby eyes, the pierced wings set with cushion-shaped diamonds of brown and near colourless tint.

Accompanied by a gemmological report.

Please note that the diamonds of brown tints have not been tested for natural colour origin.

£ 7,000-9,000 € 7,800-10,000 US\$ 9,300-12,000

12

Diamond, emerald and ruby brooch, circa 1900

Modelled as a dragonfly, the pierced wings set with rose diamonds, to a cushion-shaped emerald tail and circular-cut ruby eyes, *French assay and maker's mark*.

£ 3,000-4,000 € 3,350-4,450 US\$ 4,000-5,300

14

SOTHEBY'S

13

Diamond brooch

Designed as a flowering branch, pavé- and claw-set with brilliant-cut diamonds of yellow and near colourless tint, the central flower mounted *en tremblant*, one diamond deficient.

Please note that the diamonds of yellow tint have not been tested for natural colour origin.

£ 5,000-7,000 € 5,600-7,800 US\$ 6,700-9,300

14

Diamond and demantoid garnet brooch

Modelled as a butterfly, pavé-set with circular-cut diamonds, to circular-cut demantoid garnet eyes.

£ 12,000-15,000 € 13,300-16,700 US\$ 15,900-19,900



15



16



17

15

PROPERTY OF A LADY OF TITLE

Pair of diamond earrings, late 19th century, composite

Of pendent design, collet-set with circular-cut, cushion- and pear-shaped diamonds, accented with foliate details set with rose diamonds, *post fittings, several small diamonds deficient.*

£ 5,000-7,000 € 5,600-7,800 US\$ 6,700-9,300

16

Sapphire and diamond brooch, late 19th century

Set with a cushion-shaped sapphire, within a cushion-shaped diamond surround, *brooch fitting detachable, associated fitted case stamped Cartier.*

Accompanied by a gemmological report.

£ 15,000-20,000 € 16,700-22,200 US\$ 19,900-26,500

17

Sapphire and diamond bracelet, late 19th century

The cushion-shaped sapphire, within a cushion-shaped diamond frame, mounted on a detachable bi-coloured bracelet, edges highlighted with cushion-shaped diamonds, *length approximately 183mm, Austrian assay mark, accompanied by additional brooch and necklace fittings.*

£ 3,000-5,000 € 3,350-5,600 US\$ 4,000-6,700



18

18

Enamel, onyx and seed pearl parure, circa 1870

Comprising: pendant set with an oval cabochon onyx within a polychrome enamel surround, highlighted with cabochon amethyst and seed pearls, suspending a tapered onyx drop and two amethyst pendants, the reverse with glazed locket compartment; together with a pair of ear clips similarly set.

£ 4,000-6,000 € 4,450-6,700 US\$ 5,300-8,000

19

Pair of enamel and pearl bangles, late 19th century

Each of articulated panel design, decorated with blue guilloché enamel with central foliate plaques and seed pearl detail, to half pearl spacers, *inner circumference approximately 165 and 170mm, French assay mark, one numbered and one with indistinct maker's mark.*

£ 2,600-4,500 € 2,900-5,000 US\$ 3,450-6,000



19



20



20

Pendant and a cameo ring

The pendant modelled as a rams head, with a duck resting on its shoulders, to a suspension loop, *circa 1950s*; the ring set with a carved agate cameo, depicting the sinistral profile of a classical maiden within a Roman mount, *size I, late 18th century, each in case stamped Cameo Corner.*

Pendant attributed to Mosheh Oved.

Mosheh Oved, 1885-1958, was the owner of the Cameo Corner in Museum Street, which he founded in 1938. Trading and dealing with cameos, antique jewellery and *objet d'art*, he was known as an authority within his field. He was a founder of the Ben Uri Jewish Art Society and a well-established figure in London's Jewish community. Also known as Edward Good, he came to England around age 17, and was married to Sah Oved, well known for her jewellery designs.

£ 4,000-6,000 € 4,450-6,700 US\$ 5,300-8,000



21



21

Garnet and seed pearl parure, circa 1860

Comprising: a pendant necklace and bangle, the pendant of quatrefoil motif, set with cabochon garnets, divided by crossed lines set with seed pearls, to a fine-link necklace, glazed compartment to the reverse; the hinged bangle set with three cabochon garnets framed by bead details, the central garnet with glazed compartment to the reverse, *necklace length approximately 465mm, inner circumference of bangle approximately 163mm.*

£ 4,000-6,000 € 4,450-6,700 US\$ 5,300-8,000



22



22

Diamond and onyx cameo pendant, Giuseppe Girometti, early 19th century and later

Set with an oval onyx carved cameo depicting the dextral profile of Hercules, *measuring approximately 26 x 20mm, signed Girometti*, within a mount and detachable chain fitting set with circular-cut, cushion-shaped and rose diamonds, *length approximately 365mm, French import assay mark.*

An identical cameo of Hercules by Giuseppe Girometti (1780-1850) can be found in the British Museum, collection no. 1996.0608.1. The design is a copy of a Roman Imperial-period intaglio signed Gnaios from the Strozzi collection, also in the British Museum, collection no. 1913.0307.83.

Cf.: C. Gere & J. Rudoe, Jewellery in the Age of Queen Victoria: A Mirror to the World, London, British Museum, 2010, fig. 469, p.469, for more information.

£ 1,400-2,200 € 1,600-2,450 US\$ 1,900-2,950

23

Enamel, ruby and diamond bracelet, mid 19th century

Composed of a series of graduated open work oval links, the front links set with an oval ruby within a surround of cushion-shaped and rose diamonds and bordered in black enamel, the rear six links with a quatrefoil motif reserved on a red guilloché enamel ground, *inner circumference approximately 165mm, French assay and maker's marks.*

£ 2,600-3,600 € 2,900-4,000 US\$ 3,450-4,800



24



25



26

24

Emerald, diamond and seed pearl necklace, early 20th century, composite

The openwork articulated panel set with cabochon and calibré-cut emeralds and circular-cut diamonds, within seed pearl borders, to stylised circular-cut diamond connectors, suspended from five rows of seed pearls with single and circular-cut diamond spacers, *length approximately 380mm.*

£ 3,500-4,500 € 3,900-5,000 US\$ 4,650-6,000

25

Emerald and diamond demi-parure, late 19th century

Comprising: a pendent brooch and a pair of earrings; the pendant brooch set with a cushion-cut emerald and rose diamonds, to detachable pendant suspension; earrings of similar design, set with pear-shaped emeralds, *post and butterfly fittings, fitted case.*

£ 4,000-6,000 € 4,450-6,700 US\$ 5,300-8,000

26

Emerald and diamond bracelet

Designed as two curb-link chains collet-set with square, oval and step-cut emeralds, brilliant- and single-cut diamonds, *length approximately 190mm, gross weight approximately 110 grams, a few diamonds deficient.*

£ 3,500-4,500 € 3,900-5,000 US\$ 4,650-6,000



27



28



29

28

Pair of hessonite garnet pendent earrings, late 18th century/early 19th century

Each tapering panel closed-set with cushion-shaped hessonite garnets, suspending three similarly-set articulated drops, with engraved acorn accents, *length approximately 126mm, hook fittings.*

£ 3,000-4,000 € 3,350-4,450 US\$ 4,000-5,300

29

Diamond, ruby and pearl brooch

Designed as a bird feeding from a branch, set with single and variously-cut diamonds and circular-cut ruby accents, one flower set with a pearl, *length approximately 93mm.*

Due to the nature of the setting the pearl has not been tested for natural origin.

£ 2,000-3,000 € 2,250-3,350 US\$ 2,650-4,000

27

Hessonite garnet demi-parure, early 19th century

Comprising: a necklace and pair of earrings; the necklace composed of graduated cushion-shaped hessonite garnets in cannetille mounts and flower connections, suspending a similarly-set cross shaped detachable pendant; earrings similarly set, *necklace approximately 380mm, earrings with hook fittings.*

£ 3,000-4,000 € 3,350-4,450 US\$ 4,000-5,300



30

Micromosaic, glass and diamond brooch, mid 19th century and later

The rectangular glass plaque inlaid with an oval micromosaic, depicting the temple of Hercules Victor, to an early 20th century diamond frame set with circular-cut diamonds and diamonds of brown tint.

Please note that the diamonds of brown tint have not been tested for natural colour.

£ 3,000-4,000 € 3,350-4,450 US\$ 4,000-5,300

31

Diamond longchain necklace

Composed of a line of brilliant-cut diamonds, *length approximately 815mm.*

£ 4,000-6,000 € 4,450-6,700 US\$ 5,300-8,000

32

Diamond ring, early 20th century

Of 'toi et moi' design, set with two circular-cut diamonds weighing 1.24 and 1.18 carats respectively, the shoulders decorated with rose and circular-cut diamonds, *size M.*

£ 2,500-3,500 € 2,800-3,900 US\$ 3,350-4,650

33

Diamond bangle, late 19th century

Of crossover design, the tapering hinged bangle set with two circular-cut diamonds, weighing 2.55 and 2.78 carats respectively, the front accented with circular-cut diamonds, *inner circumference 160mm, Dutch assay mark.*

£ 9,000-13,000 € 10,000-14,400 US\$ 12,000-17,300



34



35

34

**Turquoise and freshwater pearl necklace,
Archibald Knox for Liberty & Co., circa 1900**

The necklace of belcher link design, the front with three stylised pierced pendants of Celtic inspiration, set with freshwater pearls and collet-set turquoise cabochons, *length approximately 410mm.*

LITERATURE

Cf.: Shirley Bury, *Jewellery 1789-1910 The International Era Volume II 1862-1910*, England, 1991, pg. 744 plate 398, for an image of Miss Lily Brayton, the Victorian Shakespearean actress, known for playing the lead character Zahrat-al-Kulub in the First World War musical comedy *Chu Chin Chow*, wearing a similar necklace and pg. 743 plate 397, for an illustration of Liberty's Yule-tide catalogue from 1903 with an illustration of a similar necklace costing £5 5s.

Cf.: V.Becker, *Antique and 20th Century Jewellery*, London, 1980, pg. 249, for a necklace of similar design from the 'Cymric' range by Archibald Knox for Liberty.

Cf.: *The Liberty Cymric Sketch Books*, Westminster City Archives, for the design of the above necklace.

£ 3,000-5,000 € 3,350-5,600 US\$ 4,000-6,700

35

PROPERTY OF A LADY OF TITLE

Seed pearl and diamond bracelet, late 19th century

Composed of multiple seed pearl strands, divided by three rectangular-shaped openwork panels with leaf details, set with rose diamonds and seed pearls, *length approximately 175mm.*

£ 800-1,200 € 900-1,350 US\$ 1,100-1,600



36

Pair of natural pearl and diamond earrings

Each set with a drop-shaped natural pearl of either grey or bronze tint, measuring approximately 11.5 x 8.8 x 9.0mm and 12.0 x 8.9 x 9.0mm respectively, suspended from a navette-shaped surmount set with brilliant-cut diamonds, *post fittings*.

Accompanied by a gemmological report.

£ 6,000-8,000 € 6,700-8,900 US\$ 8,000-10,600

37

Natural pearl and diamond necklace, circa 1910

Composed of two strands of graduated natural pearls, the largest measuring approximately 7.2mm diameter, to a clasp millegrain-set with rose and circular-cut diamonds, *length approximately 430mm*.

Accompanied by a gemmological report.

£ 5,000-7,000 € 5,600-7,800 US\$ 6,700-9,300

37



38

Diamond pendant, early 20th century

Designed as a cross, pavé-set with circular- and single-cut diamonds.

£ 4,000-6,000 € 4,450-6,700 US\$ 5,300-8,000



39

39

Green beryl and diamond ring, early 20th century

Collet-set with a rectangular step-cut green beryl, within a pierced circular-cut diamond set floral surround, *size G^{1/2}*.

£ 3,000-4,000 € 3,350-4,450 US\$ 4,000-5,300



40

40

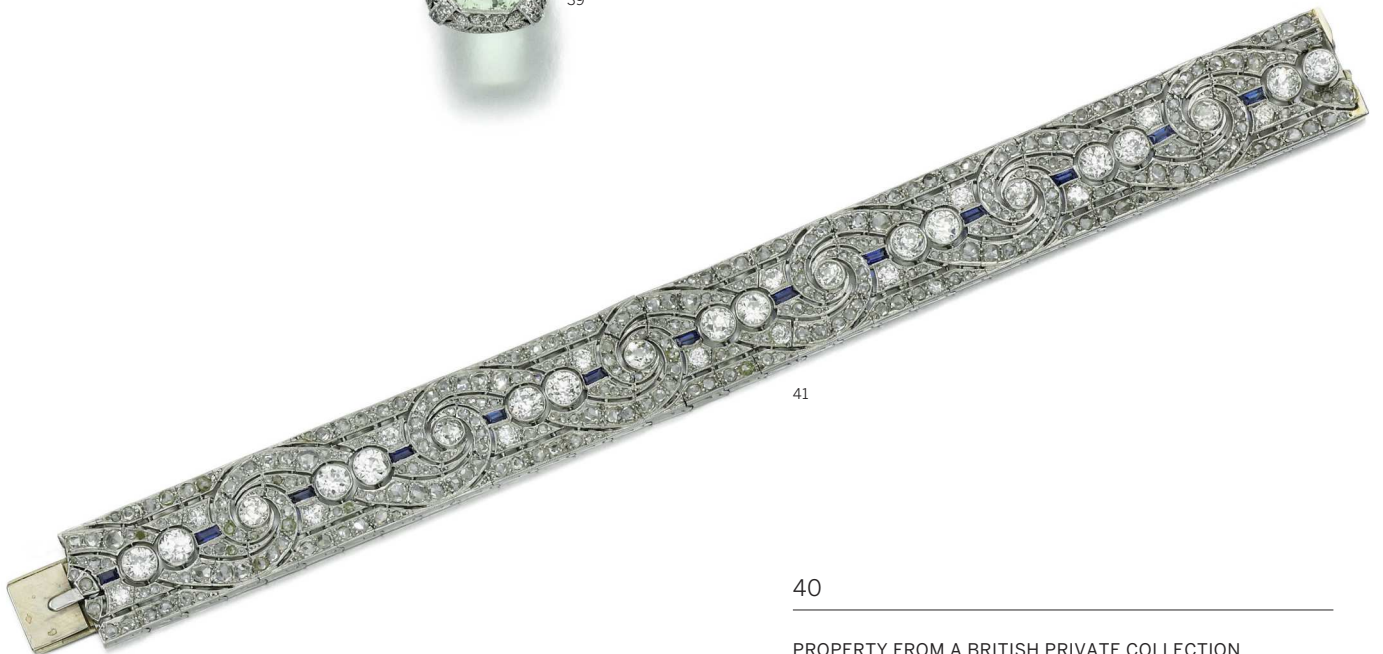
PROPERTY FROM A BRITISH PRIVATE COLLECTION

Emerald and diamond ring, 1910s

Set with a rectangular step-cut emerald, within a millegrain circular-cut diamond surround, *size E^{1/2}*.

Accompanied by a gemmological report.

£ 5,000-7,000 € 5,600-7,800 US\$ 6,700-9,300



41

41

Diamond and sapphire bracelet, circa 1910

Of pierced geometric design, millegrain and collet-set with circular-cut diamonds and calibré-cut sapphires, to millegrain-set rose and circular-cut diamonds, *length approximately 178mm, French assay and maker's marks.*

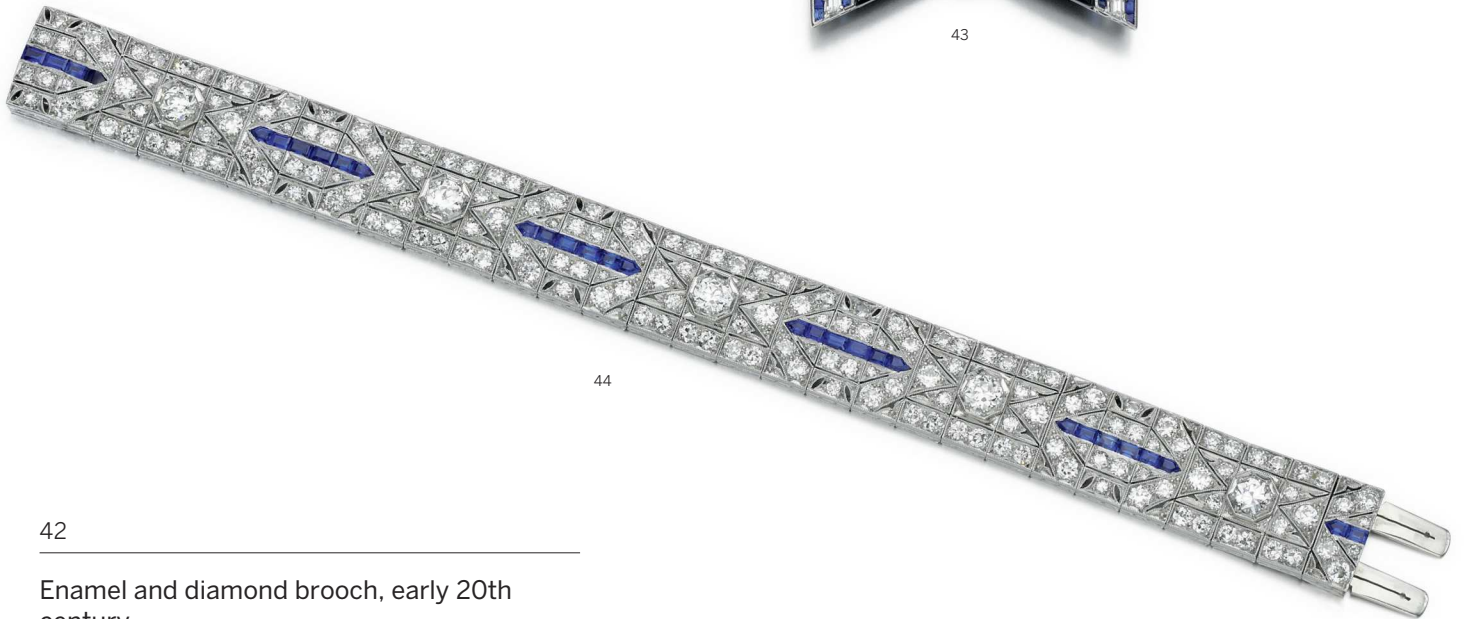
£ 6,000-10,000 € 6,700-11,100 US\$ 8,000-13,300



42



43



44

42

Enamel and diamond brooch, early 20th century

Set with a lozenge-shaped and circular-cut diamonds, decorated with green guilloché enamel, the reverse with glazed compartment.

£ 4,000-6,000 € 4,450-6,700 US\$ 5,300-8,000

43

Onyx, sapphire, emerald and diamond brooch

Designed as a bow, set with onyx panels, calibré-cut sapphires, step-cut emerald and baguette diamonds.

£ 4,000-5,000 € 4,450-5,600 US\$ 5,300-6,700

44

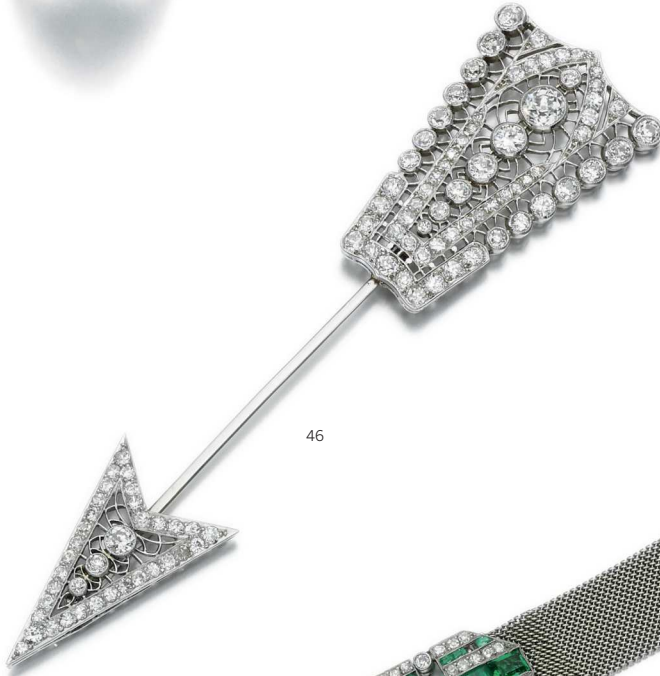
Diamond and sapphire bracelet

Millegrain-set with circular-cut diamonds, highlighted with five circular-cut diamonds, accented with calibré-cut sapphires, length approximately 184mm.

£ 12,000-15,000 € 13,300-16,700 US\$ 15,900-19,900



45



46



47

45

Emerald and diamond ring

Of quatrefoil design, the collet-set circular-cut diamond, within a frame of calibré-cut emeralds and circular-cut diamonds, size N^o.

£ 8,000-12,000 € 8,900-13,300 US\$ 10,600-15,900

46

Diamond jabot pin, circa 1915

Designed as an arrow, the arrowhead and fletching millegrain-set with circular-cut diamonds, *length approximately 114mm.*

£ 3,500-4,500 € 3,900-5,000 US\$ 4,650-6,000

47

Lady's emerald and diamond cocktail watch, Van Cleef & Arpels, circa 1920

The rectangular cream dial with Arabic numerals within a single-cut diamond and calibré-cut emerald bezel, similarly-set geometric and diamond three-stone shoulders, to a mesh bracelet with emerald and diamond clasp, *bracelet length approximately 173mm, dial signed Van Cleef & Arpels, case numbered, French assay mark, two emeralds deficient, modern case stamped Van Cleef & Arpels.*

£ 10,000-15,000 € 11,100-16,700 US\$ 13,300-19,900



48



49



50



48

Pair of diamond earrings, circa 1910

Of floral pendent design, millegrain-set with circular-cut diamonds, suspending a pear-shaped diamond, *hook fittings*.

£ 10,000-15,000 € 11,100-16,700 US\$ 13,300-19,900

49

Enamel and diamond pendent watch and chain, circa 1910

The round dial of grey guilloché enamel with Arabic numeral indicators and blued steel hands, within an oval case of blue and white guilloché enamel, millegrain-set with circular-cut and rose diamonds, the winder set with a cabochon sapphire, to a box link chain, *length of necklace approximately 600mm, chain not illustrated*.

£ 3,500-4,500 € 3,900-5,000 US\$ 4,650-6,000

50

PROPERTY OF A LADY OF TITLE

Two diamond brooches, circa 1910

Comprising: a circular brooch of geometric open work design with floral motifs, millegrain-set with circular-cut and cushion-shaped diamonds; and a smaller brooch of similar design, *each with several diamonds deficient*.

£ 2,400-3,200 € 2,700-3,550 US\$ 3,200-4,250



51



52



53

52

PROPERTY OF A LADY OF TITLE

Diamond and natural pearl brooch and pair of diamond clip brooches, 1920s

The brooch of buckle design, set with single, rose and circular-cut diamonds and highlighted with two natural pearls; and a pair of clip brooches of pierced openwork design, each set with single, rose and circular-cut diamonds.

Accompanied by a gemmological report.

£ 1,500-2,500 € 1,700-2,800 US\$ 2,000-3,350

51

Diamond necklace, circa 1910

Composed of alternating rectangular and circular links, the front with graduated swags and palmette motifs, millegrain-set throughout with circular-cut diamonds, the centre suspending a graduated circular-cut diamond pendant, *length approximately 420mm, cased.*

£ 8,000-12,000 € 8,900-13,300 US\$ 10,600-15,900

53

Diamond, ruby and emerald ring

The step-cut diamond framed by calibré-cut rubies and emeralds and circular-cut diamonds, *size O.*

£ 7,000-9,000 € 7,800-10,000 US\$ 9,300-12,000



54

Lady's diamond and enamel bag, Cartier, 1920s

The cream and silver patterned silk pouch of trapezoid outline, to a black enamel fastening, set with single-cut diamonds, centring upon a later mabé pearl and circular-cut diamond push piece, the strap of cylinder-shaped links spaced with seed pearls, opening to reveal a compartment and two card slots, measuring approximately 155 x 120 x 10mm, signed Cartier, numbered, French assay marks.

£ 2,800-4,200 € 3,150-4,700 US\$ 3,750-5,600

55

Diamond ring

Claw-set with a circular-cut diamond, weighing 4.49 carats, to baguette diamond shoulders, size O.

£ 7,500-8,500 € 8,400-9,500 US\$ 10,000-11,300

56

Diamond double-clip brooch, 1930s

Each shield shaped clip set with circular-cut and baguette diamonds, accompanied by brooch fitting allowing both clips to be worn together.

£ 2,400-3,800 € 2,700-4,250 US\$ 3,200-5,100



58



59



57

58

Aquamarine and diamond ring, Garrard & Co. Ltd., 1977

Claw-set with a step-cut aquamarine, the shoulders set with three baguette diamonds to each side, *size G*, *sizing beads*, signed *Garrard & Co. Ltd.*, *British hallmarks*.

£ 3,000-4,000 € 3,350-4,450 US\$ 4,000-5,300

59

Aquamarine, sapphire and diamond ring

Set with a step-cut aquamarine, the gallery and edges highlighted with *calibré-cut* and *cabochon* sapphires and brilliant-cut diamonds, *size P*.

£ 4,000-6,000 € 4,450-6,700 US\$ 5,300-8,000

57

Sapphire, emerald and diamond brooch/pendant, 1930s

Of geometric pierced panel design, set with single- and circular-cut diamonds, *cabochon*, *baguette* and *shield-shaped* sapphires and *emeralds*, *hinged pendant bail*.

£ 4,000-6,000 € 4,450-6,700 US\$ 5,300-8,000



60

Sapphire and diamond brooch, early 20th century

Of openwork garter design, set with oval and cushion-shaped sapphires, with cushion and circular-cut diamond borders, *Russian assay and maker's mark, later brooch fitting to the reverse.*

Accompanied by a gemmological report.

£ 10,000-15,000 € 11,100-16,700 US\$ 13,300-19,900

61

Two diamond bracelets

Each designed as a line of brilliant-cut diamonds, each *length approximately 183 and 184mm.*

£ 5,000-7,000 € 5,600-7,800 US\$ 6,700-9,300

62

62

Diamond ring

Claw-set with a brilliant-cut diamond weighing 2.62 carats, size *1 1/2.*

£ 5,000-7,000 € 5,600-7,800 US\$ 6,700-9,300

63

63

Diamond ring

Claw-set with a circular-cut diamond, weighing 2.60 carats, size *N.*

£ 3,000-5,000 € 3,350-5,600 US\$ 4,000-6,700



64

64

PROPERTY FROM A BRITISH PRIVATE COLLECTION

Ruby and diamond necklace

Designed as an alternating graduated line of circular-cut and cushion-shaped rubies and diamonds, suspending a circular-cut diamond pendant, *length approximately 337mm*.

£ 10,000-15,000 € 11,100-16,700 US\$ 13,300-19,900



66

65

Ruby and diamond ring, Tiffany & Co., early 20th century

The pierced mount, set with a step-cut cushion-shaped ruby, with calibr -cut ruby corner accents, millegrain-set with single and circular-cut diamonds, size *M*, signed *Tiffany & Co.*

Accompanied by GIA report no. 2185144821, dated January 2017, stating that the natural ruby is of Burma (Myanmar) origin, with no indications of heating.

£ 18,000-22,000 € 20,000-24,400 US\$ 23,900-29,200

66

Diamond ring

Claw-set with a brilliant-cut diamond weighing 4.31 carats, size *M*.

£ 14,000-18,000 € 15,600-20,000 US\$ 18,600-23,900



67



68



69

67

Diamond ring

The rectangular-shaped mount claw-set with two cushion-shaped diamonds, weighing 2.24 and 2.20 carats respectively, size $L^{1/2}$.

£ 7,000-10,000 € 7,800-11,100 US\$ 9,300-13,300

68

Emerald and diamond brooch, circa 1950s

Of bow design, pavé-set with brilliant-cut diamonds and baguette diamond highlights, centring on a later-set step-cut emerald.

£ 7,000-9,000 € 7,800-10,000 US\$ 9,300-12,000

69

Diamond double-clip brooch, 1930s

Each of scrolled ribbon design, claw- and pavé-set with circular-cut diamonds, *additional brooch fitting deficient*.

£ 6,000-8,000 € 6,700-8,900 US\$ 8,000-10,600



70



72



73



71

70

Diamond ring

Claw-set with a circular-cut diamond weighing 5.36 carats between baguette diamond shoulders, *size P*.

£ 14,000-18,000 € 15,600-20,000 US\$ 18,600-23,900

71

Sapphire and diamond double-clip brooch, circa 1935

Each clip of scroll design, set with oval and circular-cut sapphires and pavé-set circular-cut diamonds, to scrolled baguette-cut diamond-set panels, *length approximately 59mm*.

£ 5,000-7,000 € 5,600-7,800 US\$ 6,700-9,300

72

PROPERTY FROM A BRITISH PRIVATE COLLECTION

Sapphire and diamond ring

Claw-set with a step-cut sapphire, step-cut and triangular diamonds arranged in a geometric design, *size J^{1/2}*.

£ 6,000-8,000 € 6,700-8,900 US\$ 8,000-10,600

73

Star sapphire and diamond ring

Claw-set with a cabochon star sapphire within a surround of brilliant-cut diamonds, *size N^{1/2}*.

£ 8,000-12,000 € 8,900-13,300 US\$ 10,600-15,900



74

Sapphire and diamond demi-parure

Comprising: a ring and pair of earrings, the ring set with an oval sapphire within a brilliant and tapered baguette diamond frame; each earring similarly-set, *ring size M, post fittings, British hallmarks and maker's mark.*

£ 3,000-4,000 € 3,350-4,450 US\$ 4,000-5,300

75

Diamond and seed pearl longchain necklace

Composed of a continuous row of spectacle-set brilliant-cut diamonds and seed pearls, *length approximately 1180mm.*

£ 4,000-6,000 € 4,450-6,700 US\$ 5,300-8,000

76

Diamond ring

Claw-set with a circular-cut diamond weighing 1.97 carats, *size Q.*

£ 4,500-5,500 € 5,000-6,100 US\$ 6,000-7,300

77

Jadeite and diamond ring

Claw-set with an oval cabochon jadeite, within a square and brilliant-cut diamond surround, *size R.*

Accompanied by a gemmological report.

£ 4,000-6,000 € 4,450-6,700 US\$ 5,300-8,000



78



79



80



81

78

Emerald, sapphire and diamond demi-parure

Comprising: a pendent necklace and pair of earrings, the pendant set with a pear-shaped cabochon emerald, cabochon sapphire and brilliant-cut diamond, to a fine link chain, the earrings similarly set, *earrings with post fittings, British hallmarks and maker's mark.*

Accompanied by a gemmological report.

£ 5,000-7,000 € 5,600-7,800 US\$ 6,700-9,300

79

Pair of diamond pendent earrings

Each designed as an articulated series of collet-set brilliant-cut and briolette diamonds, *length approximately 65mm, post and butterfly fittings.*

£ 3,000-4,000 € 3,350-4,450 US\$ 4,000-5,300

80

Diamond ring

Claw-set with a brilliant-cut diamond, weighing 2.53 carats, *size O½, indistinct Italian assay marks.*

£ 5,000-7,000 € 5,600-7,800 US\$ 6,700-9,300

81

Diamond ring

Claw-set with a brilliant-cut diamond, weighing 2.95 carats, *size L½.*

£ 4,500-6,500 € 5,000-7,200 US\$ 6,000-8,700



82



83



84

82

Emerald and diamond ring

Claw-set with a square step-cut emerald, within a square and brilliant-cut diamond frame, *size L*.

£ 6,000-7,000 € 6,700-7,800 US\$ 8,000-9,300

83

Emerald and diamond ring

Claw-set with a step-cut emerald, within a marquise-shaped and baguette diamond surround, the shoulders accented with two brilliant-cut diamonds, *size L, sizing band*.

£ 6,000-8,000 € 6,700-8,900 US\$ 8,000-10,600

84

Diamond double-clip brooch, 1950s

Of geometric tassel design, set throughout with baguette, single and circular-cut diamonds, *detachable brooch fitting*.

£ 3,000-5,000 € 3,350-5,600 US\$ 4,000-6,700



85



86



87

85

Diamond brooch, 1960s

The baguette diamond ribbon suspending a cluster of pear-, marquise-shaped and brilliant-cut diamonds, *pendant bail to reverse.*

£ 16,000-24,000 € 17,800-26,600 US\$ 21,200-31,800

86

Pair of emerald and diamond pendent ear clips, 1960s

The surmounts of abstract scroll design, set with baguette, marquise-shaped and brilliant-cut diamonds, each suspending an articulated pendant set with similarly cut diamonds and a pear-shaped emerald, *clip fittings, pendants detachable.*

£ 8,000-12,000 € 8,900-13,300 US\$ 10,600-15,900

87

Emerald and diamond ring

Claw-set with a pear-shaped emerald within a surround of brilliant-cut diamonds, *size M^{L/2}.*

£ 4,000-6,000 € 4,450-6,700 US\$ 5,300-8,000



88

Pair of diamond earstuds

Each brilliant-cut diamond weighing 2.07 and 2.13 carats respectively, *post fittings*.

£ 5,500-8,000 € 6,100-8,900 US\$ 7,300-10,600



90

89

Two cultured pearl necklaces

Each graduated line of cultured pearls to a spherical clasp, one pavé-set with brilliant-cut diamonds, *each length approximately 400 and 440mm respectively, one with maker's mark, the other with Italian marks.*

£ 4,000-6,000 € 4,450-6,700 US\$ 5,300-8,000

90

Sapphire and diamond ring

The oval sapphire within a tapered baguette and brilliant-cut diamond frame, *size O^{1/2}*.

Accompanied by a gemmological report.

£ 3,000-4,500 € 3,350-5,000 US\$ 4,000-6,000



91



92



93

91

Natural pearl and diamond brooch/diadem, 1960s

Of scrolled foliate design, set with single- and circular-cut diamonds and natural pearls, suspending five natural pearls, length measuring 135 x 80mm, brooch detachable, two diamonds deficient.

Accompanied by a gemmological report.

£ 5,500-7,500 € 6,100-8,400 US\$ 7,300-10,000

92

Pair of cultured pearl and diamond pendent ear clips

Each set with a detachable drop-shaped cultured pearl of grey and cream tint, with brilliant-cut diamond caps, set with marquise-shaped and brilliant-cut diamonds, clip fittings, French assay marks.

£ 8,000-10,000 € 8,900-11,100 US\$ 10,600-13,300

93

Sapphire and diamond ring

Set with an oval sapphire within a brilliant-cut diamond frame, size M.

Accompanied by a gemmological report.

£ 5,000-7,000 € 5,600-7,800 US\$ 6,700-9,300



94

Emerald and diamond ring

Set with a pear-shaped emerald within an undulating tapered baguette diamond frame, *size L, sizing band*.

Accompanied by a gemmological report.

£ 15,000-20,000 € 16,700-22,200 US\$ 19,900-26,500



95

Diamond ring, Boucheron, 1930s

Of geometric design, claw-set with one brilliant-cut and one circular-cut diamond weighing 1.57 and 1.56 carats, between shoulders and two rows set with baguette-shaped diamonds, *size M^{1/2}, signed Boucheron, French assay and partial maker's marks, brilliant-cut diamond a later replacement*.

£ 4,500-6,500 € 5,000-7,200 US\$ 6,000-8,700



96

Diamond brooch, 1960s

Designed as an abstract floral spray, set with brilliant-cut, marquise-shaped and baguette diamonds, *French assay and maker's marks*.

£ 1,800-2,200 € 2,000-2,450 US\$ 2,400-2,950



97



97

PROPERTY FROM THE COLLECTION OF A NOBLE FAMILY

Diamond and emerald demi-parure, Monture Boucheron, 1960s

Comprising: a brooch and pair of ear clips; the brooch of spray design, set with step-cut emeralds and brilliant-cut and baguette diamonds; the ear clips similarly set, emeralds detachable, clip fittings, all signed Monture Boucheron, French assay marks, brooch with maker's mark, case stamped Boucheron.

Accompanied by a gemmological report.

£ 18,000-26,000 € 20,000-28,800 US\$ 23,900-34,500



99



98

98

Diamond ring

Claw-set with a brilliant-cut diamond weighing 4.20 carats, the shoulders set with baguette diamonds, size *M^{1/2}*, French assay and partial maker's marks.

Accompanied by a gemmological report.

£ 16,000-22,000 € 17,800-24,400 US\$ 21,200-29,200

99

Emerald ring

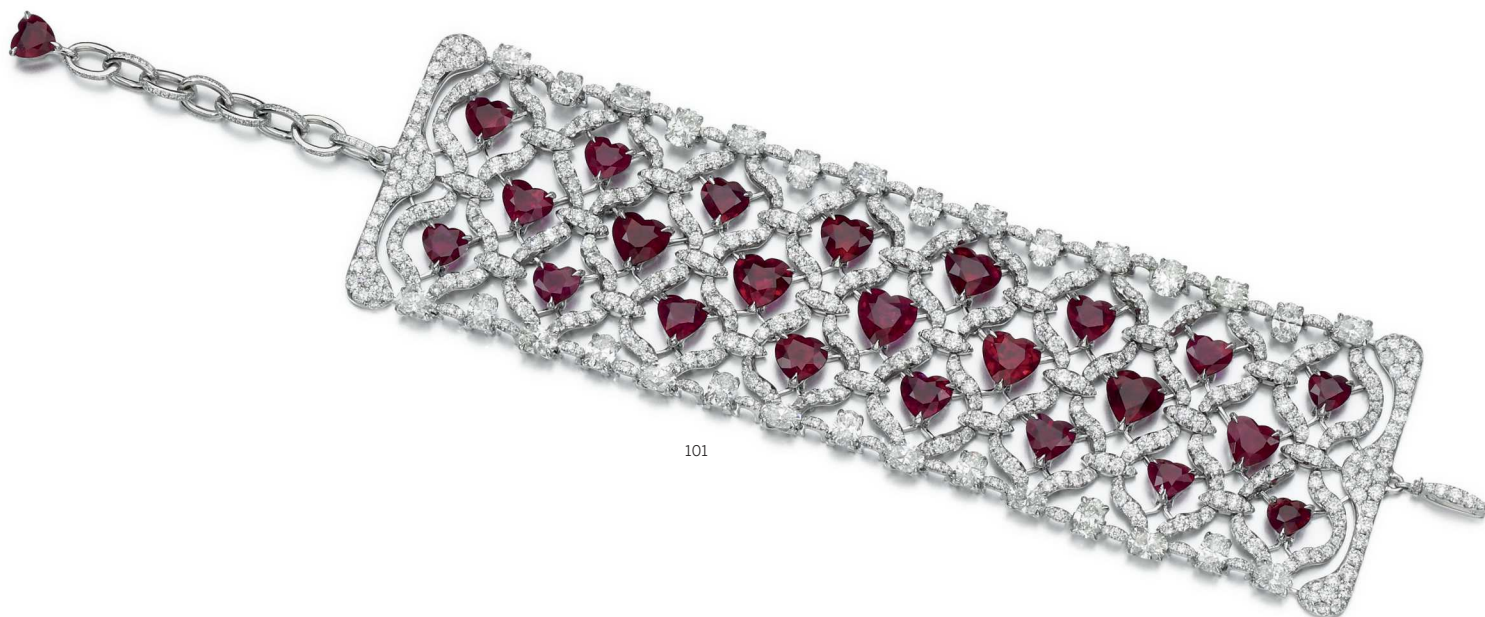
Claw-set with a step-cut emerald weighing 5.84 carats, size *L*.

Accompanied by Gübelin, report no. 17040072, stating that the emerald is of Colombian origin, with indications of minor clarity enhancement.

£ 10,000-15,000 € 11,100-16,700 US\$ 13,300-19,900



100



101

100

Pair of diamond earrings

Each designed as an entwined floral stem, set with brilliant-cut and briolette diamonds, to a similarly-set flower surmount, post and clip fittings.

£ 20,000-30,000 € 22,200-33,300 US\$ 26,500-39,700

101

Ruby and diamond bracelet, Chopard

Designed as a large flexible band set with heart-shaped rubies, to an oval diamond border, length approximately 192mm, signed Chopard, numbered.

£ 45,000-65,000 € 49,900-72,000 US\$ 60,000-86,500



Lot 101 enlarged



102



103



104



105

102

Pair of diamond ear clips

Each of cluster design, set with marquise-shaped diamonds, clip fittings.

£ 4,000-6,000 € 4,450-6,700 US\$ 5,300-8,000

103

Diamond ring

Claw-set with a marquise-shaped diamond weighing 3.09 carats, between marquise-shaped diamond shoulders, size J.

£ 6,000-8,000 € 6,700-8,900 US\$ 8,000-10,600

104

Emerald and diamond ring

Claw-set with a step-cut emerald, between tapered baguette diamond shoulders, size N.

Accompanied by Gübelin report no. 16060117, stating that the emerald is of Colombian origin, with indications of minor clarity enhancement.

£ 15,000-25,000 € 16,700-27,700 US\$ 19,900-33,100

105

Emerald and diamond brooch

Set with a circular-cut emerald, brilliant-cut and tapered baguette diamonds, highlighted by circular-cut emeralds.

Accompanied by a gemmological report.

£ 4,000-6,000 € 4,450-6,700 US\$ 5,300-8,000



106

106

Pair of emerald and diamond ear clips

Each claw-set with a step-cut emerald weighing 4.85 and 5.01 carats respectively, within a frame of brilliant-cut and marquise-shaped diamonds, *clip and post fittings*.

Accompanied by two Gübelin reports no. 17040040 and 17040039, both dated 13th April 2017, stating that both emeralds are of Colombian origin, with evidence of minor clarity enhancement.

£ 16,000-24,000 € 17,800-26,600 US\$ 21,200-31,800



107

107

Emerald and diamond ring

Claw-set with a step-cut emerald weighing 5.94 carats between shoulders set with heart-shaped diamonds, *size J^{1/2}*.

Accompanied by Gübelin report no. 17040041, dated 13th April 2017, stating that the emerald is of Colombian origin with indications of minor clarity enhancement.

£ 6,500-9,500 € 7,200-10,600 US\$ 8,700-12,600

108

Diamond double-clip brooch, 1950s

Each designed as a stylised scroll, set with brilliant-cut and baguette diamonds, *additional brooch fitting deficient*.

£ 8,000-10,000 € 8,900-11,100 US\$ 10,600-13,300



108



109



110



111

109

Cultured pearl and diamond parure, Mikimoto

Comprising: a necklace, pair of earrings and a ring; the pendant necklace set with a cultured pearl and brilliant-cut diamonds, to a fine-link necklace; each earring and ring similarly set, necklace approximately 460mm, earrings with post and clip fittings, ring size L½, maker's mark, wooden case stamped Mikimoto accompanied by polishing cloth and booklet.

£ 4,000-6,000 € 4,450-6,700 US\$ 5,300-8,000

110

Lady's diamond wristwatch, 'Reine de Naples', Breguet

The elliptical dial pavé-set with brilliant-cut diamonds, with off-centre mother-of-pearl time display, Arabic numeral indicators and blued steel hands, faceted diamond crown, the partially glazed reverse revealing the movement, the strap with brilliant-cut diamond double deployant clasp, inner circumference adjustable, dial, case, bracelet and clasp signed Breguet, numbered, Swiss assay and maker's marks.

£ 10,000-15,000 € 11,100-16,700 US\$ 13,300-19,900

111

Diamond bracelet

Designed as an articulated scrolled openwork band, set with brilliant-cut and marquise-shaped diamonds, length approximately 180mm.

£ 5,000-7,000 € 5,600-7,800 US\$ 6,700-9,300



112

113



114

113

Diamond necklace

Of tapered undulating collar design, set with brilliant-cut diamonds, *inner circumference approximately 385mm, one link loose.*

£ 3,000-5,000 € 3,350-5,600 US\$ 4,000-6,700

112

Pair of aquamarine and diamond earrings

Each designed as a flexible series of pear-shaped aquamarines framed by brilliant-cut diamonds, *post fittings, British assay and maker's marks.*

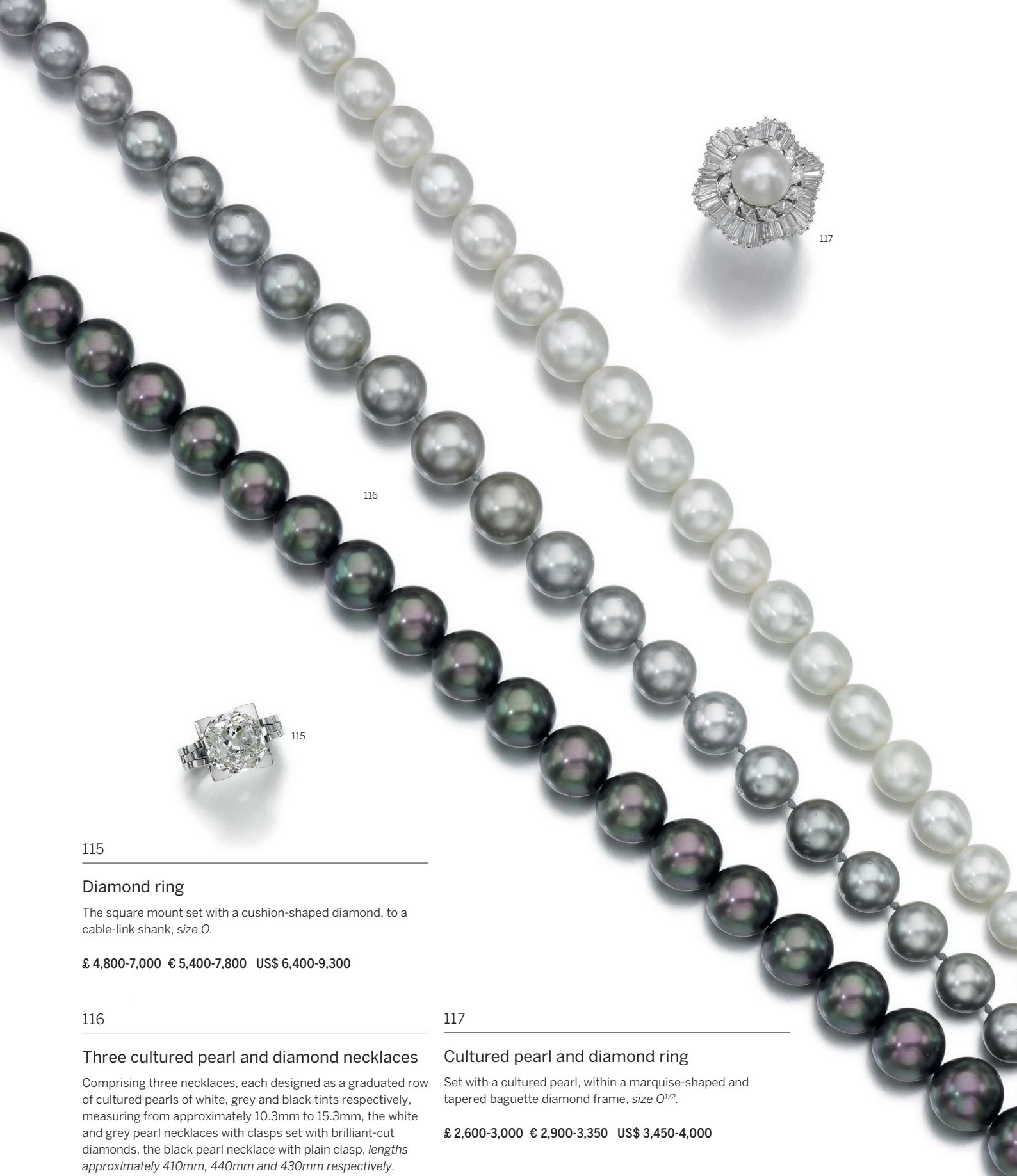
£ 3,000-4,000 € 3,350-4,450 US\$ 4,000-5,300

114

Aquamarine, sapphire and diamond bracelet

The wide band set with cabochon aquamarines interspersed by circular-cut diamonds and sapphires, *length approximately 200mm x 45mm, one link detached.*

£ 3,000-4,000 € 3,350-4,450 US\$ 4,000-5,300



115

115

Diamond ring

The square mount set with a cushion-shaped diamond, to a cable-link shank, size O.

£ 4,800-7,000 € 5,400-7,800 US\$ 6,400-9,300

116

Three cultured pearl and diamond necklaces

Comprising three necklaces, each designed as a graduated row of cultured pearls of white, grey and black tints respectively, measuring from approximately 10.3mm to 15.3mm, the white and grey pearl necklaces with clasps set with brilliant-cut diamonds, the black pearl necklace with plain clasp, lengths approximately 410mm, 440mm and 430mm respectively.

£ 4,000-6,000 € 4,450-6,700 US\$ 5,300-8,000



117

117

Cultured pearl and diamond ring

Set with a cultured pearl, within a marquise-shaped and tapered baguette diamond frame, size O^{1/2}.

£ 2,600-3,000 € 2,900-3,350 US\$ 3,450-4,000



118



119



120



121

118

Diamond brooch, 1960s

Of flower design set with circular-cut and baguette diamonds.

£ 4,000-8,000 € 4,450-8,900 US\$ 5,300-10,600

119

Emerald and diamond ring

Claw-set with a step-cut emerald within a brilliant-cut and marquise-shaped diamond frame, size P^{1/2}.

Accompanied by a gemmological report.

£ 1,500-2,500 € 1,700-2,800 US\$ 2,000-3,350

120

Diamond bracelet, 1950s

Set with brilliant- and single-cut diamonds, length approximately 177mm, can be worn as a bracelet or reconstructed into a brooch and pair of earrings, accompanied by brooch and earring fittings.

£ 4,000-6,000 € 4,450-6,700 US\$ 5,300-8,000

121

Emerald and diamond bracelet

The flexible line set with circular-cut emeralds and diamonds, length approximately 175mm, Italian assay mark.

£ 2,000-3,000 € 2,250-3,350 US\$ 2,650-4,000



122



123



124



125

122

Diamond pendant

The square diamond weighing 3.01 carats, suspended from a square diamond of pink tint, to a fine necklace, *length approximately 450mm*.

Accompanied by GIA report no. 15294968, stating that the diamond weighing 3.01 carats is F Colour, VS1 Clarity and an Argyle report.

£ 20,000-25,000 € 22,200-27,700 US\$ 26,500-33,100

123

Pair of diamond ear studs

Each claw-set with a brilliant-cut diamond, weighing 0.97 and 0.95 carats, *post and butterfly fittings*.

£ 1,600-2,600 € 1,800-2,900 US\$ 2,150-3,450

124

Ruby and diamond ring

Claw-set with a pear-shaped ruby weighing 1.43 carats, within a brilliant-cut diamond surround, *size L^{1/2}, British hallmarks and maker's mark*.

Accompanied by a gemmological report.

£ 4,500-5,500 € 5,000-6,100 US\$ 6,000-7,300

125

Emerald and diamond ring

Claw-set with a heart-shaped emerald weighing 1.98 carats, within a brilliant-cut diamond frame, *size M, British hallmarks and maker's mark*.

Accompanied by a gemmological report.

£ 5,500-6,500 € 6,100-7,200 US\$ 7,300-8,700



126



127



128



129

126

Diamond demi-parure

Comprising: a necklace and pair of pendent earrings; the necklace designed as a graduated row of heart and fleurs-de-lis drops, the front pavé-set with brilliant-cut diamonds; earrings of matching design, *necklace length approximately 385mm, earrings with post and clip fittings, Italian assay marks.*

£ 3,000-5,000 € 3,350-5,600 US\$ 4,000-6,700

127

Pair of diamond earrings, Graff

Each heart pavé-set with brilliant-cut diamonds of yellow tint within a brilliant-cut and pear-shaped diamond frame, *post and clip fittings, signed Graff.*

Please note that the diamonds of yellow tint have not been tested for natural colour origin.

£ 4,000-6,000 € 4,450-6,700 US\$ 5,300-8,000

128

Diamond ring

Claw-set with a brilliant-cut diamond weighing 1.53 carats, size *J^{1/2}*.

£ 3,000-4,000 € 3,350-4,450 US\$ 4,000-5,300

129

Diamond ring

Set with two claw-set brilliant-cut diamonds weighing 1.44 and 1.42 carats respectively, size *M*.

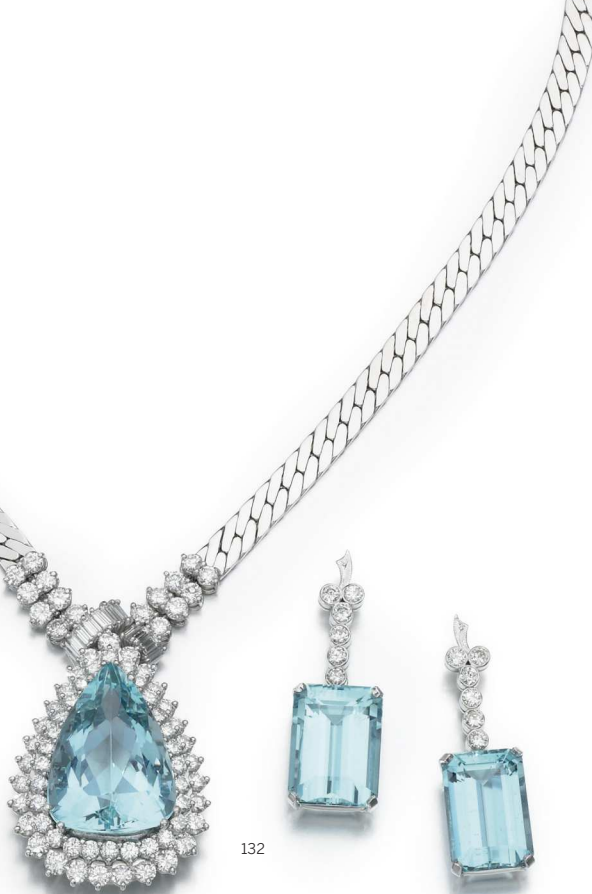
£ 2,400-3,800 € 2,700-4,250 US\$ 3,200-5,100



130



131



132

133

130

Ruby and diamond ring

The oval ruby mounted between triangular diamond shoulders, size *M*².

Accompanied by a gemmological report.

£ 2,000-3,000 € 2,250-3,350 US\$ 2,650-4,000

131

PROPERTY OF A LADY OF TITLE

Diamond ring

Composed of three interlocking bands set with brilliant-cut diamonds, size *I*, British hallmarks and maker's mark.

£ 3,000-5,000 € 3,350-5,600 US\$ 4,000-6,700

132

Aquamarine and diamond demi-parure

The necklace set with a pear-shaped aquamarine within a double brilliant-cut diamond border, the necklace set to the front with brilliant-cut and baguette diamonds, necklace length approximately 440mm; the earrings set with step-cut aquamarines suspended from a brilliant-cut diamond surmount, *post fittings*.

£ 6,000-7,000 € 6,700-7,800 US\$ 8,000-9,300

133

Aquamarine and diamond ring

Claw-set with a step-cut aquamarine within a brilliant-cut diamond frame, size *O*.

Accompanied by a gemmological report.

£ 1,200-1,500 € 1,350-1,700 US\$ 1,600-2,000



134



135



136

134

Diamond necklace

The front set with a brilliant-cut diamond weighing 5.08 carats, within a brilliant-cut and tapered diamond frame to a knitted fine-link necklace. *length approximately 385mm, Italian assay and maker's marks.*

£ 17,000-19,000 € 18,900-21,100 US\$ 22,500-25,200

135

Aquamarine and diamond ring

The claw-set step-cut aquamarine set between shield-shaped diamond shoulders, *size J^{1/2}, British hallmarks.*

£ 3,000-5,000 € 3,350-5,600 US\$ 4,000-6,700

136

Ruby and diamond bracelet

Claw-set with a line of brilliant-cut diamonds between lines of circular-cut rubies, *length approximately 180mm.*

£ 6,000-6,500 € 6,700-7,200 US\$ 8,000-8,700

Andrew Grima's innovative and adventurous jewellery designs won him prestigious commissions from patrons such as Queen Elizabeth II and Princess Margaret, and numerous awards including a royal warrant and thirteen De Beers Diamond International awards. Based at his showroom on Jermyn Street in Mayfair, Grima's profile had grown internationally throughout the 1960s, and in 1969 he attracted the attention of the Swiss watch brand Omega. Intrigued by Grima's bold and visionary approach to jewellery design, Omega commissioned a collection of watches to be exhibited around the world. Launching in 1970 at the Goldsmith's Hall in London, the collection consisted of 85 pieces under the title 'About Time'. Each of the watches was set with a gemstone in place of a watch glass, allowing the owner to view the time through the stone. Each also represented a new challenge for Grima, to integrate the watch movement into his designs in a variety of new and inventive ways. The present pendant watch exemplifies Grima's achievements in this seminal collection. The juxtaposition of the amorphous and organic qualities of the opal with the clarity and sharpness of the triangular diamonds that surround it amply demonstrates the flair for texture and the unique understanding of materials that have earned Grima such enduring acclaim.



137



138



139

137

Opal and diamond watch pendant, 'About Time', Grima, 1970s

The manual winding watch with plain dial and tapered hands behind a pear-shaped polished opal, within a surround of triangular diamonds, to a rectangular-linked chain, *length approximately 617mm, signed Grima, numbered, maker's marks for Andrew Grima and Omega, British hallmarks.*

This unusual pendant watch forms part of the 'About Time' collection, a collaboration between Andrew Grima (1921-2007) and Omega.

£ 7,000-9,000 € 7,800-10,000 US\$ 9,300-12,000

138

Sapphire and diamond brooch and pair of ear clips, Oscar Heyman & Brothers, 1950s

Each of spray design, set with tapered sapphires of blue, yellow and pink tints and brilliant-cut and baguette diamonds, *brooch numbered, maker's mark; ear clips with screw back fittings, maker's mark and signed Birks.*

It is likely that the ear clips were retailed by Canadian retailers Birks.

£ 10,000-15,000 € 11,100-16,700 US\$ 13,300-19,900

139

Diamond ring

The step-cut diamond of yellow tint weighing 2.04 carats, within a brilliant-cut and baguette diamond surround, *size J.*

Please note that the diamond of yellow tint has not been tested for natural colour.

£ 4,800-6,500 € 5,400-7,200 US\$ 6,400-8,700





140

Diamond pendant/brooch and two neckchains, Claudio Salocchi

Modelled as a shooting star, collet-set with brilliant-cut diamonds and inscribed ' We are entering the light of stars, sun and moon. What a marvelous sight!', together with one wire-link and one snake-link neckchain, pendant with loop suspension and brooch fitting, *snake-link neckchain approximately 420mm, each chain with Italian maker's marks.*

Accompanied by a post card from MOC (Museo per l'oreficeria contemporanea).

Claudio Salocchi (1934-2012) was an Italian designer, whose skills extended across architecture, furniture, fashion, accessories and jewellery. He gained international recognition for his architectural designs, winning numerous awards both in his native Italy and in New York, and in addition to his post as vice-president of the Associazione per il Disegno Industriale (ADI), he lectured at the University of Rome, and several other educational institutions in Italy.

£ 4,000-6,000 € 4,450-6,700 US\$ 5,300-8,000

141

Diamond ring

Set with a brilliant-cut diamond, *size M.*

£ 4,800-6,800 € 5,400-7,600 US\$ 6,400-9,000

142

Ruby and diamond ring

Set with a circular-cut ruby weighing 5.13 carats, shoulders set with brilliant-cut diamonds, *size M.*

Accompanied by SSEF, report no. 72604, stating that the ruby is of Burmese origin, with no indications of heating.

£ 20,000-30,000 € 22,200-33,300 US\$ 26,500-39,700



143



144



145

143

Chalcedony, sapphire and diamond necklace, Scavia, and ring

Comprising: a necklace collet-set to the centre with a trapezoid-shaped diamond, to square sapphires and polished chalcedony links spaced at the front with baguette diamonds, length approximately 407mm, signed Scavia, Italian maker's mark; and a ring, set with a step-cut sapphire, polished chalcedony and circular-cut diamonds, size L.

£ 2,000-3,000 € 2,250-3,350 US\$ 2,650-4,000

144

Tanzanite and diamond ring

Claw-set with an oval tanzanite weighing 10.10 carats, within a brilliant-cut diamond frame, size N, British hallmarks and maker's mark.

Accompanied by a gemmological report.

£ 6,000-8,000 € 6,700-8,900 US\$ 8,000-10,600

145

Steel and lacquer bangle, Pol Bury

Of hinged elliptical design, applied with black lacquer 'C'est moi qui décide!', inner circumference approximately 175mm, signed Pol Bury, numbered 4/8.

£ 4,000-6,000 € 4,450-6,700 US\$ 5,300-8,000



146

146

**Gold and gem-set ornament 'Super Shells',
Grima, circa 1972**

Designed as a seal, the body of an Australis shell, balancing polished sapphire and ruby bead balls on its nose, on an iron pyrite rock, to a petrified wood base, *signed Grima, maker's mark, British hallmarks for London, 1972, original wooden crate marked Andrew Grima London twice.*

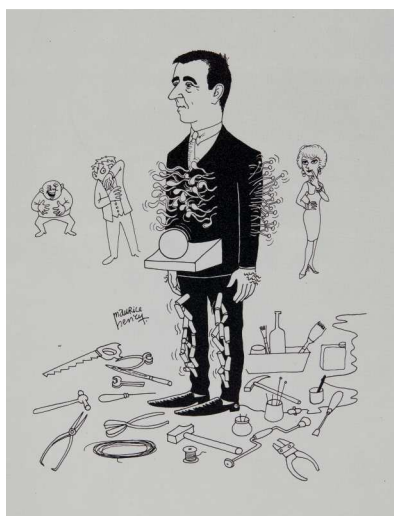
EXHIBITED

Grima Retrospective, Goldsmiths' Hall, Fosters Lane, London, May 1991, where this piece was exhibited, item 277, page 74 in the catalogue.

£ 3,000-5,000 € 3,350-5,600 US\$ 4,000-6,700

Pol Bury (1922-2005) was a Belgian sculptor influenced by the perception of time. In 1938 he was a student at the Académie Royale des Beaux-Arts in Mons, focusing on painting, drawing and decorative arts. During his studies he was introduced to the surrealist movement, drawing particularly from the works of Magritte and Tanguy. After the Second World War, he moved away from Surrealism and towards abstraction and simplicity, exploring themes of movement within his work, for example, introducing motors into his sculptures, allowing the object to

rotate slowly in random movements. Bury's work was met with critical and commercial acclaim, selling all his pieces before the opening of his show at the Lefebvre gallery in the 1960s. He became established as a well-known figure in the art world, and his sculptures can be found in collections and museums worldwide. The moving spheres incorporated into the design of the present bangle were a common motif throughout Pol Bury's work, showing the continuity between his approaches to sculpture and jewellery, and reflecting his interest in themes of gravity and motion.



Pol Bury by Maurice Henry, 1962, from Dore Ashton, *Pol Bury*, Maeght Editeur, Paris, 1970, pg.148



147

147

Bangle, Pol Bury

The bicoloured cuff of hinged design, set with spheres to the interior and exterior, *inner circumference approximately 164-172mm, signed Pol Bury, numbered 7/8, first edition made in 1966.*

Accompanied by the book *Pol Bury* by Dore Ashton, published in 1970 by Maeght Editeur, Paris. Square 4to, with dust-jacket and card slipcase.

£ 8,000-10,000 € 8,900-11,100 US\$ 10,600-13,300



THIS PAGE
LOTS 203, 205, 206 & 218

SESSION TWO

LONDON
WEDNESDAY
20 SEPTEMBER 2017
2 PM

LOTS 148-297





148

148

Sapphire brooch, 1940s

Designed as a floral spray, set with oval, cushion-shaped and cabochon sapphires, *Italian maker's mark*.

£ 1,600-2,400 € 1,800-2,700 US\$ 2,150-3,200



149

149

Nephrite, bowenite and diamond brooch, 1960s

Designed as a rose of carved bowenite, the sepals set with single-cut diamonds, the leaves of carved nephrite, *Austrian assay and partial maker's marks*.

£ 3,000-4,000 € 3,350-4,450 US\$ 4,000-5,300



150

150

Sapphire bangle, Buccellati

Designed as a hinged textured cuff, with collet-set cabochon sapphires, *inner circumference approximately 165mm, signed Buccellati*.

£ 5,000-7,000 € 5,600-7,800 US\$ 6,700-9,300



151



152



151

Hardstone and diamond brooch, Carrington & Co, 1960s

Designed as a bramble branch, the flowers decorated with single-cut diamond petals, to carved nephrite leaves and carved berries in chrysophase, cornelian and onyx, *signed Carrington, case stamped Carrington.*

£ 2,600-3,500 € 2,900-3,900 US\$ 3,450-4,650



153

152

Two sapphire, emerald, ruby and diamond brooches, 1960s

Each designed as a basket of flowers, set with brilliant-cut diamonds and square, baguette and circular-cut sapphires, emeralds and rubies.

£ 1,400-1,700 € 1,600-1,900 US\$ 1,900-2,250

153

Diamond brooch

Designed as a ladder interwoven with an ivy branch, the leaves set with single-cut diamonds, *signed Cazzaniga.*

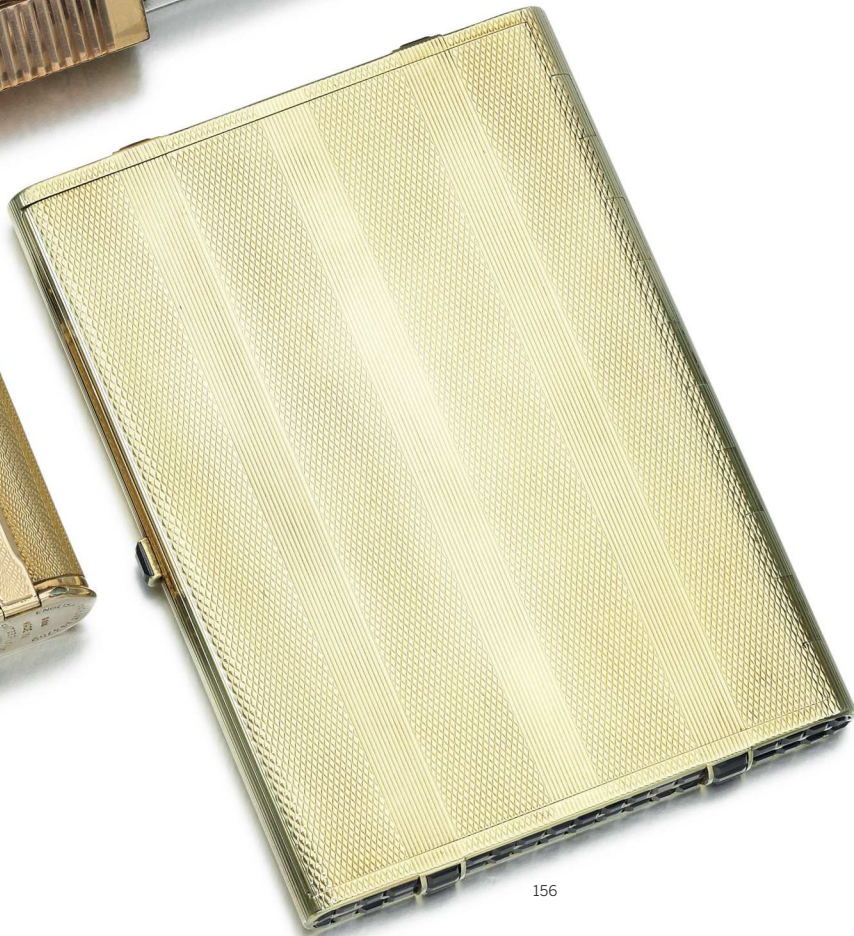
£ 1,600-2,400 € 1,800-2,700 US\$ 2,150-3,200



154



155



156

154

Gem set and paste vanity case, Boucheron, 1940s

The reeded rectangular case with pierced front decoration of birds and butterflies amongst flowering vines, accented with collet-set emeralds, rubies, sapphires and yellow paste, reeded thumb piece, opening up to reveal a mirror, a powder compartment, tortoiseshell comb, compartment, lipstick holder and lighter, *length measuring 130 x 84 x 18mm, signed Boucheron, numbered, French assay and maker's mark, gross weight approximately 488 grams.*

• £ 3,000-4,000 € 3,350-4,450 US\$ 4,000-5,300

155

Lighter/watch, 'Sports Lighter Unique', Dunhill, 1927

The rectangular body engraved with a scale pattern, the hinged front containing a manual winding watch with Arabic numeral indicators, *measuring approximately 53 x 43 x 17mm, dial and case signed Dunhill, British import hallmarks and maker's mark, gross weight approximately 82 grams.*

£ 4,000-6,000 € 4,450-6,700 US\$ 5,300-8,000

156

Sapphire cigarette case, Cartier

Of rectangular form, the exterior engraved with a hatched and reeded pattern, opening to reveal a plain interior, the ends and thumbpiece set with calibr -cut sapphires, *measuring approximately 105 x 75 x 8mm, signed Cartier, numbered, gross weight approximately 161 grams.*

£ 4,000-6,000 € 4,450-6,700 US\$ 5,300-8,000



157



158



159



158

Diamond powder compact, 1940s

Of trapezoid outline with reeded pattern, to a single-cut diamond thumb piece, opening up to reveal a mirror and powder compartment, *measuring approximately 84 x 65 x 19mm, Italian maker's mark, gross weight approximately 137 grams.*

£ 3,500-5,500 € 3,900-6,100 US\$ 4,650-7,300

157

Diamond ring, Grima, 1973

The square textured mount inset with a line of square diamonds, *size F^{1/2}, sizing band, signed Grima, British hallmark.*

LITERATURE

Cf.: Goldsmith's Hall, *Grima: Retrospective*, London, 1991, pg. 69, no. 157, for a ring of similar design dated 1973, from the collection of Carole Grima.

£ 2,000-3,000 € 2,250-3,350 US\$ 2,650-4,000

159

Lapis lazuli and diamond demi-parure, 1960s

Comprising: a bracelet, composed of textured oval links set with fluted cabochons of lapis lazuli, gathered in a central motif additionally highlighted with brilliant-cut diamonds, *length approximately 175mm, Italian maker's marks;* and a ring of similar design, *size G^{1/2}.*

£ 3,000-5,000 € 3,350-5,600 US\$ 4,000-6,700



160



163



162



161

160

Cigarette case, Faraone, 1940s

The reeded rectangular case with circular-cut and baguette diamond thumb piece, opening up to reveal a compartment, measuring approximately 86 x 58 x 25mm, Italian maker's mark for Illario, gross weight approximately 130 grams.

£ 2,400-3,800 € 2,700-4,250 US\$ 3,200-5,100

162

Diamond brooch, 1940s

Of scrolled ribbon design, set with circular-cut diamonds, with two principal lines of circular-cut diamonds.

£ 3,200-4,800 € 3,550-5,400 US\$ 4,250-6,400

163

Ruby and diamond brooch, 1940s

Designed as a flower posy tied by a ribbon, set with brilliant-cut diamonds and circular- and calibr -cut rubies.

Please note that one ruby is deficient and will be replaced at Sotheby's expense.

£ 2,000-3,000 € 2,250-3,350 US\$ 2,650-4,000

161

Diamond ring

Claw-set with a cushion-shaped diamond weighing 2.77 carats, to a tapered reeded hoop, size J.

£ 3,500-4,000 € 3,900-4,450 US\$ 4,650-5,300



164

Diamond ring

The claw-set brilliant-cut diamond weighing 2.38 carats, to a broad textured tapered band, size E.

£ 3,200-4,800 € 3,550-5,400 US\$ 4,250-6,400



165

Ruby and diamond brooch, 1940s

Designed as a cornucopia filled with flowers tied by a ribbon, set with single-, circular-cut and cushion-shaped diamonds and circular-cut and marquise-shaped rubies.

£ 1,600-2,400 € 1,800-2,700 US\$ 2,150-3,200

166

Citrine, ruby and diamond brooch, 1940s

Claw-set with a step-cut citrine, the sculptural scrolls set with single-cut diamonds and oval rubies.

£ 4,000-5,000 € 4,450-5,600 US\$ 5,300-6,700



167

167

Onyx, enamel and diamond desk timepiece, Black Starr & Frost, 1930s

Of rectangular form, the top inset with a panel of onyx, the exterior applied with a geometric pattern in white enamel, the hinged front with rose diamond handles opening to reveal a square dial of white guilloché enamel with blued steel hands within a Roman numeral border, to an onyx base, *measuring approximately 60 x 30 x 37mm, dial signed Black, Starr & Frost, case numbered, French assay and maker's marks.*

The configuration of additional, larger Roman numerals lining the dial and extending across the interior of the hinged doors of the present timepiece was an innovation patented by J. Vergely of Paris in 1925, designed to make the time easier to read.

Cf.: Judy Rudoie, Cartier 1900 - 1939, British Museum, 1997, pg. 132 nos. 70 and 71, for two desk timepieces of similar design made in France for Cartier New York or London, dated circa 1928.

£ 12,000-18,000 € 13,300-20,000 US\$ 15,900-23,900



168

168

Enamel 'montre à volets' clip-watch, Verger Frères, 1930s

The square cream dial with Arabic numerals and blued steel hands, within a square bezel and shutters, on a black enamel base and double crowns, to a baton-shaped suspension with reeded panel detail, *numbered, French assay and maker's mark, later brooch fitting.*

£ 4,000-6,000 € 4,450-6,700 US\$ 5,300-8,000



169

169

Nephrite box, Cartier, circa 1940

Of rectangular shape, the polished hinged nephrite box with fan-shaped clasp and hinges, *measuring approximately 93 x 56 x 23mm, signed Cartier, French assay and maker's marks.*

£ 6,000-8,000 € 6,700-8,900 US\$ 8,000-10,600



170



172



171

171

Lady's diamond wristwatch, Cartier, circa 1910

The rectangular cream dial with Roman numerals and inner minute rail, within a rose-cut diamond bezel, diamond-set crown, silk bracelet and rose diamond double deployant clasp, inner circumference approximately 150mm, dial signed Cartier, numbered, French assay and maker's marks.

£ 8,000-12,000 € 8,900-13,300 US\$ 10,600-15,900

170

Enamel and diamond pill box, Van Cleef & Arpels, 1920s

Of rectangular form, applied with black enamel, each corner decorated with a fan-shaped panel set with rose diamonds, to a rose diamond push-piece, opening up to reveal a compartment, measuring approximately 31 x 21mm, signed Van Cleef et Arpels, numbered, French assay and maker's mark, fitted case stamped Van Cleef & Arpels.

£ 4,000-6,000 € 4,450-6,700 US\$ 5,300-8,000

172

Enamel, diamond and ivory desk timepiece, Cartier, early 20th century

The circular dial of white enamel decorated with a painted laurel wreath, with Arabic numeral indicators and rose diamond hands, within a purple guilloché enamel bezel, the reverse of ivory, with hinged strut, diameter approximately 79mm, signed Cartier to dial and reverse, French assay and maker's marks.

£ 7,000-9,000 € 7,800-10,000 US\$ 9,300-12,000



173 not to scale

173

**Jasper cigarette box and ashtray, Cartier,
1970s**

The rectangular hinged case with stylised thumbpiece, applied with marble inlays, opening to reveal a compartment, measuring approximately 155 x 105 x 38mm, signed Cartier, numbered, French assay and maker's mark; together with one ashtray, measuring approximately 128 x 84 x 27mm, unsigned, all in fitted case stamped Cartier, applied with the cypher of the République Française.

£ 4,000-6,000 € 4,450-6,700 US\$ 5,300-8,000



174 not to scale

174

Prisma 'Mystery' desk clock, Cartier, 1980s

The reeded rectangular-shaped mystery-style clock, the rectangular cream dial with Roman numerals and inner minute-rail, *measuring approximately 95 x 60 x 57mm, signed Cartier to the dial and reverse, numbered, French assay and maker's marks.*

£ 2,000-3,000 € 2,250-3,350 US\$ 2,650-4,000



175
not to scale

175

Mother-of-pearl, lacquer and glass desk timepiece, Cartier, 1930s

The round mother-of-pearl dial with Roman numerals, black octagonal centre and architectural hands, to a tinted mirrored glass and lacquer rectangular case, on a stepped tinted mirrored glass and lacquer base, *measuring approximately 152 x 138 x 73mm, dial signed Cartier, base numbered.*

£ 7,000-10,000 € 7,800-11,100 US\$ 9,300-13,300



176



177

176

**Pair of amethyst and diamond ear clips,
Cartier, 1960s**

Each modelled as a leaf, set with an oval amethyst within a brilliant-cut diamond surround, *signed Cartier, French assay and maker's mark, clip fittings.*

£ 5,000-7,000 € 5,600-7,800 US\$ 6,700-9,300

177

Bracelet and demi-parure, Minotto

The bracelet composed of a series of leaf and acorn panels, *length approximately 180mm, signed Minotto*; the demi-parure comprising a brooch and pair of ear clips, each designed as a thistle, *ear clips with clip fittings, brooch and one ear clip signed Minotto, one clip unsigned, each with case stamped Minotto.*

£ 2,000-3,000 € 2,250-3,350 US\$ 2,650-4,000



178



179



180

178

Gold brooch, Cartier, 1955

Designed as a rose with matt petals, *signed Cartier, numbered, British hallmark and maker's mark, fitted case stamped Cartier.*

Accompanied by a letter from Cartier London, dated 1957.

£ 5,000-6,000 € 5,600-6,700 US\$ 6,700-8,000

179

Pair of amethyst and turquoise cufflinks, Cartier, 1960s

Each set with a cabochon amethyst, within a cabochon turquoise surround, *signed Cartier, numbered.*

£ 4,000-6,000 € 4,450-6,700 US\$ 5,300-8,000

180

Brooch, Buccellati

Modelled as three acorns and oak leaves, *signed Buccellati, Italian maker's mark.*

£ 2,400-3,800 € 2,700-4,250 US\$ 3,200-5,100



181



182

181

PROPERTY FROM A BRITISH PRIVATE COLLECTION

Pair of citrine and diamond ear clips, Cartier, 1940s

Each set with pear-shaped citrines and single and circular-cut diamonds, *clip fittings, signed Cartier, numbered, fitted case stamped Cartier.*

Cf.: Nadine Coleno, Amazing Cartier: Jewelry Design since 1937, Flammarion, Paris, 2009, pg. 115, for a pair of citrine and diamond ear clips by Cartier London of comparable design, dated 1944.

£ 10,000-15,000 € 11,100-16,700 US\$ 13,300-19,900

182

PROPERTY FROM A BRITISH PRIVATE COLLECTION

Citrine and diamond bracelet, Cartier, 1940s

Designed as a flowering vine, the flowers set with variously-cut citrines, the leaves set with single- and circular-cut diamonds, *length approximately 190mm, signed Cartier, fitted case stamped Cartier.*

Cf.: Nadine Coleno, Amazing Cartier: Jewelry Design since 1937, Flammarion, Paris, 2009, pg. 121, for two brooches by Cartier London of comparable design, dated 1942 and 1943.

£ 20,000-30,000 € 22,200-33,300 US\$ 26,500-39,700



183



183

PROPERTY FROM A BRITISH PRIVATE COLLECTION

Citrine, paste and diamond brooch and ring, 1940s

The brooch of flower spray design, set with variously-shaped citrines and circular-cut diamonds with a later added marquise-shaped paste detail; the ring *en suite* of flower cluster design, set with variously-shaped citrines, with circular-cut diamond and boule pistil details, *size I, brooch and ring composite, later brooch fitting.*

By family tradition the brooch was purchased from Cartier in London and the ring was later converted from one of the flower jewels in the brooch.

£ 5,000-7,000 € 5,600-7,800 US\$ 6,700-9,300



Lots 181 & 182 enlarged



184



185



186

184

Diamond ring

Of bombé design, pavé-set with brilliant-cut diamonds, size O.

£ 2,000-3,000 € 2,250-3,350 US\$ 2,650-4,000

185

Diamond brooch

Designed as a single camellia, pavé- and claw-set throughout with brilliant-cut diamonds, the leaf and petals with rope twist borders.

£ 4,000-6,000 € 4,450-6,700 US\$ 5,300-8,000

186

Diamond bracelet, Garrard & Co. Ltd., 1960s

Of scrolled rope-twist design, highlighted with brilliant-cut diamond accents, length approximately 195mm, London assay and maker's mark, fitted case from Garrard.

£ 3,000-4,000 € 3,350-4,450 US\$ 4,000-5,300



187



189



188

188

Ruby and diamond bracelet, 'Pelouse', Van Cleef & Arpels, 1960s

Designed as a flexible boule band, set to the front with diagonal rows of circular-cut rubies, intersected by rows of circular-cut diamonds, length approximately 165mm, signed VCA, numbered, French and British assay and maker's marks.

£ 5,000-7,000 € 5,600-7,800 US\$ 6,700-9,300

187

Diamond brooch, Boucheron, 1960s

Of textured openwork scroll design, accented with brilliant-cut diamonds, signed Boucheron, French assay and maker's mark.

£ 3,000-4,000 € 3,350-4,450 US\$ 4,000-5,300

189

Pair of earrings, Van Cleef & Arpels, 1960s

Each of pendent design, composed of pierced graduated spheres, signed VCA, numbered, French assay and makers mark, clip fittings.

£ 4,000-6,000 € 4,450-6,700 US\$ 5,300-8,000



190



191



192

190

Necklace

Of twisted triple gas pipe link design, length approximately 360mm, French assay and indistinct maker's mark, gross weight approximately 87 grams.

£ 1,800-2,600 € 2,000-2,900 US\$ 2,400-3,450

191

Sapphire and diamond demi-parure

Comprising: a ring and pair of ear clips; the ring set with three oval sapphires and brilliant-cut diamonds, size P; each ear clip similarly set.

Accompanied by a gemmological report.

£ 3,000-5,000 € 3,350-5,600 US\$ 4,000-6,700

192

Diamond jarretière bracelet, 1950s

The woven band decorated with cross motifs set with brilliant-cut diamonds, to a belt-buckle clasp designed as a bow, inner circumference approximately 175mm, French assay and indistinct maker's marks.

£ 1,800-2,200 € 2,000-2,450 US\$ 2,400-2,950



193



194



195

194

Sapphire, enamel and diamond demi-parure, 1950s

Comprising: a brooch and pair of ear clips/brooches; brooch of cornucopia design, composed of fine chain-links, set with carved sapphires within brilliant-cut diamond surrounds, accented with enamel; ear clips similarly set, each accompanied by brooch clip fittings, indistinct assay marks.

£ 3,000-5,000 € 3,350-5,600 US\$ 4,000-6,700

193

Diamond necklace, Mauboussin, 1960s

The front set with brilliant-cut diamonds, to a fine woven link necklace, length approximately 390mm, signed Mauboussin, numbered, French assay and maker's marks.

£ 2,200-3,200 € 2,450-3,550 US\$ 2,950-4,250

195

Sapphire and diamond bracelet, 1960s

Each panel set with a cabochon sapphire, connected by brilliant-cut diamond flowers, length approximately 183mm.

£ 2,000-3,000 € 2,250-3,350 US\$ 2,650-4,000



196

196

Lady's evening bag, 1960s

Of rectangular shape and basket weave design, measuring approximately 155 x 90 x 42mm, gross weight approximately 389 grams, mirror deficient.

£ 3,200-4,800 € 3,550-5,400 US\$ 4,250-6,400



197

197

Ruby and diamond bracelet, 1960s

The clasp of scroll design, highlighted by claw-set brilliant-cut diamonds and rubies, length approximately 190mm, maker's mark.

£ 2,400-4,000 € 2,700-4,450 US\$ 3,200-5,300



198

198

Ruby and diamond brooch

Designed as a leaf, set with carved and cabochon rubies and brilliant-cut diamonds.

£ 3,000-5,000 € 3,350-5,600 US\$ 4,000-6,700

199

Pair of ear clips, 'Bamboo', Cartier

Each realistically modelled as three curved matt bamboo stalks, signed Cartier, numbered, French assay and maker's mark, clip fittings.

£ 4,000-6,000 € 4,450-6,700 US\$ 5,300-8,000



199



200

200

Ruby and diamond demi-parure, 1960s

Comprising: a necklace and bracelet, each highlighted with circular-cut rubies and brilliant-cut diamonds, necklace length approximately 430mm and bracelet length approximately 196mm.

£ 3,500-4,500 € 3,900-5,000 US\$ 4,650-6,000

201

Enamel and gem-set demi-parure, early 20th century

Comprising: a bracelet, brooch and pair of ear studs; the bracelet designed as a series of baton-shaped links, to enamel blackamoore head terminals, the central line set with oval garnets; together with a matching brooch and pair of ear studs; bracelet approximately 220mm, ear studs with post and butterfly fittings.

£ 3,000-5,000 € 3,350-5,600 US\$ 4,000-6,700



201



202

202

Lady's wristwatch 'Panthère', Cartier

The rectangular cream dial with Roman numerals, within a polished bezel and cabochon sapphire crown, to a mesh-link bracelet with double-deployant clasp, inner circumference approximately 145mm, dial, case and bracelet signed Cartier, numbered, Swiss assay and maker's marks, accompanied by extra link, fitted case stamped Cartier.

£ 2,400-3,800 € 2,700-4,250 US\$ 3,200-5,100



203

203

Lady's evening bag, 'Melone', Bulgari, 1970s

Of reeded bicoloured design to a hinged loop, accompanied by eleven variously-coloured tassels, signed Bulgari, numbered, measuring approximately 150 x 90 x 30mm, gross weight approximately 456 grams.

£ 6,000-8,000 € 6,700-8,900 US\$ 8,000-10,600



204



205



206

205

Cuff bangle, Cartier

Of flexible cuff design, decorated with marching elephants, their eyes set with circular-cut emeralds, to a ribbed border, inner circumference 155mm, signed Cartier, numbered, French assay marks, fitted case stamped Cartier.

£ 10,000-15,000 € 11,100-16,700 US\$ 13,300-19,900

204

Necklace, 'Tubogas', Bulgari

Of gas pipe links, collet-set with three coins to the front, length approximately 355mm, signed Bulgari, gross weight approximately 183 grams, pouch stamped Bvlgari.

£ 8,000-12,000 € 8,900-13,300 US\$ 10,600-15,900

206

Diamond ring 'Panthère', Cartier

Of crossover design, pavé-set throughout with brilliant-cut diamonds, head with pear-shaped emerald eyes and onyx nose detail, signed Cartier, numbered, French assay and maker's mark, case stamped Cartier.

£ 20,000-30,000 € 22,200-33,300 US\$ 26,500-39,700



207



209



208

207

Diamond necklace

Set with heart-shaped, brilliant-cut and baguette diamonds, *inner circumference approximately 385mm.*

£ 5,000-6,000 € 5,600-6,700 US\$ 6,700-8,000

208

Sapphire, ruby and diamond bracelet

Of curb link design, set with circular-cut rubies and sapphires and brilliant-cut diamonds, *length approximately 190mm.*

£ 4,000-6,000 € 4,450-6,700 US\$ 5,300-8,000

209

Pair of diamond earrings

Each claw-set with a circular-cut diamond weighing 2.23 and 2.55 carats respectively, to a circular-cut diamond surmount, *numbered, makers mark, hinged back fittings.*

£ 10,000-15,000 € 11,100-16,700 US\$ 13,300-19,900



210



211



212

210

Diamond necklace

Composed of interlocking crossover links set with single- and brilliant-cut diamonds, length approximately 402mm, British hallmarks, gross weight approximately 106 grams, several diamonds deficient.

£ 2,000-3,000 € 2,250-3,350 US\$ 2,650-4,000

211

Wristwatch, 'Tank Louis', Cartier

The rectangular engine-turned white dial with Roman numerals and hidden signature at 'X', cabochon sapphire crown, to a brick-link bracelet and double deployant clasp, inner circumference approximately 162mm, dial, case and bracelet signed Cartier, numbered, Swiss, European and maker's mark, accompanied by spare links.

£ 3,000-5,000 € 3,350-5,600 US\$ 4,000-6,700

212

Gem set and diamond pendant, 'Happy Diamonds', Chopard

Designed as an articulated clown, costume set with brilliant-cut diamonds, the glazed belly containing five free-floating sapphire, emerald, ruby and diamonds, with sapphire eyes and ruby ears, to a fancy-link necklace, necklace length approximately 515mm, signed Chopard, numbered, French assay and maker's marks.

£ 3,000-5,000 € 3,350-5,600 US\$ 4,000-6,700



214



213



215

213

Diamond demi-parure, Damiani

Comprising: a ring and pair of ear clips, set with brilliant-cut diamonds; ring size O^{1/2}; ear clips with post and clip fittings, signed Damiani, Italian assay mark.

£ 2,000-3,000 € 2,250-3,350 US\$ 2,650-4,000

214

Pair of sapphire, emerald and diamond ear clips

The surmounts set with brilliant-cut diamonds and a cabochon emerald, suspending a similarly set lower section issuing a tassel of graduated sapphire beads, length approximately 85mm, clip fittings, maker's mark.

£ 7,000-9,000 € 7,800-10,000 US\$ 9,300-12,000

215

Diamond bangle

The hinged cuff decorated at the front with two hearts pavé-set with brilliant-cut diamonds, inner circumference approximately 160mm, maker's mark.

£ 3,000-5,000 € 3,350-5,600 US\$ 4,000-6,700



216



216

Gem set and diamond parure

Comprising: a necklace of hinged collar design, the front section pavé-set with brilliant-cut diamonds and collet-set with a heart-shaped ruby, sapphire and emerald, *inner circumference approximately 365mm, Italian maker's mark*; a bangle of similar design, *inner circumference approximately 175mm, Italian maker's mark*; and a pair of ear clips, *clip fittings*.

£ 4,000-6,000 € 4,450-6,700 US\$ 5,300-8,000



217

217

Ruby and diamond ring

Of broad tapering design, set with a ruby and brilliant-cut diamonds, *size N*.

£ 4,000-6,000 € 4,450-6,700 US\$ 5,300-8,000



218



219



220

218

Gem set necklace, Bulgari

Set with various gemstones, including aquamarine, amethyst, pink tourmaline, peridot, citrine and green tourmaline, length approximately 410mm, signed Bulgari, Italian marks, pouch stamped Bulgari.

£ 3,000-5,000 € 3,350-5,600 US\$ 4,000-6,700

219

Ruby, emerald and diamond ring

Of tapered design, collet-set with an oval-cut ruby and sapphire between a rectangular step-cut emerald, size O, Austrian assay mark.

£ 3,500-4,500 € 3,900-5,000 US\$ 4,650-6,000

220

Lady's wristwatch, 'Trinity', Cartier

The circular engine-turned white dial with Roman numerals, within a brilliant-cut diamond triple ring bezel and diamond crown, to a fancy link bracelet and double deployant clasp, inner circumference approximately 140mm, dial, case and bracelet signed Cartier, numbered, Swiss, European and maker's mark, accompanied by extra links.

£ 3,000-5,000 € 3,350-5,600 US\$ 4,000-6,700



221



222



223

221

Gem set necklace

The front set with collet-set heart-shaped stones, including amethyst, aquamarine, blue topaz, tourmaline, citrine and one cubic zirconia, to a concealed clasp, *inner circumference approximately 380mm, Austrian assay and maker's marks.*

£ 5,000-7,000 € 5,600-7,800 US\$ 6,700-9,300

222

Lady's wristwatch, 'Pasha', Cartier

The circular white dial with Arabic quarters, baton hour markers and inner square minute dial, date aperture, the bezel set with brilliant-cut diamonds, *inner circumference approximately 150mm, dial, case, bracelet signed Cartier, numbered, Swiss, European and maker's mark.*

£ 5,000-7,000 € 5,600-7,800 US\$ 6,700-9,300

223

Pair of ear clips, Aldo Cipullo for Cartier, circa 1973

Each designed as a ship steering wheel, *signed 1973 © A.Cipullo, Cartier, clip fittings.*

£ 3,000-5,000 € 3,350-5,600 US\$ 4,000-6,700



224

225

224

Gem set and diamond necklace

Composed of a line of cabochon emeralds, sapphires and rubies within frames of brilliant-cut diamonds, connected by a curb link chain highlighted in sections with additional brilliant-cut diamonds, length approximately 930mm, Italian and French maker's marks, gross weight approximately 200 grams.

Accompanied by a gemmological report.

£ 4,500-7,500 € 5,000-8,400 US\$ 6,000-10,000

225

Sapphire and diamond brooch, Giulio Veronesi

Designed as a stylised floral spray, set with brilliant-cut diamonds and oval sapphires, signed G. Veronesi, fitted case stamped Giulio Veronesi.

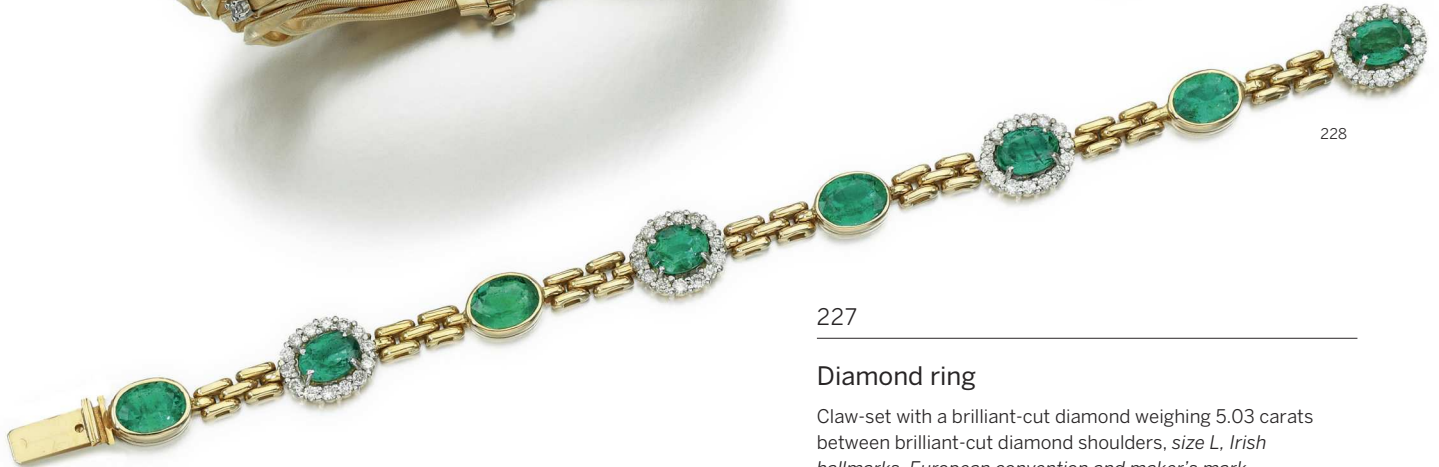
£ 5,000-8,000 € 5,600-8,900 US\$ 6,700-10,600



226



227



228

227

Diamond ring

Claw-set with a brilliant-cut diamond weighing 5.03 carats between brilliant-cut diamond shoulders, size L, Irish hallmarks, European convention and maker's mark.

Accompanied by a gemmological report.

£ 5,000-6,000 € 5,600-6,700 US\$ 6,700-8,000

226

Diamond parure

Comprising: a necklace, bracelet and ring; each of swag design, twisted gaspipe chain set with brilliant-cut diamonds; necklace approximately 410mm, bracelet length approximately 193mm, ring size R, each signed Marco Bicego, Italian maker's mark.

£ 4,000-6,000 € 4,450-6,700 US\$ 5,300-8,000

228

Emerald and diamond bracelet

Set with oval emeralds and brilliant-cut diamonds between chain-link connections, length approximately 180mm, French assay mark.

£ 4,000-6,000 € 4,450-6,700 US\$ 5,300-8,000



229

229

Coral and diamond demi-parure, Sabbadini

Comprising: a ring set with pear-shaped coral between tapering shoulders set with coral and brilliant-cut diamonds, size J; and a pair of ear clips; each signed Sabbadini, Italian maker's marks, box and pouch stamped Sabbadini.

Accompanied by a gemmological report.

• £ 3,000-4,000 € 3,350-4,450 US\$ 4,000-5,300



230

231

230

Gem set necklace, Ilias Lalaounis

Of negligée design, the fine-link woven neckchain with adjustable circular-cut sapphire clasp accented with a pair of fish head terminals set with single-cut diamonds, length adjustable, maximum length approximately 850mm, signed Ilias Lalaounis, French assay and maker's mark.

£ 5,000-7,000 € 5,600-7,800 US\$ 6,700-9,300

231

Gem set necklace, Ilias Lalaounis

Of negligée design, the fine-link woven neckchain with adjustable circular-cut sapphire clasp accented with a pair of ram head terminals set with circular-cut sapphires and rubies, length adjustable, maximum length approximately 900mm, signed Lalaounis, maker's mark.

£ 5,000-7,000 € 5,600-7,800 US\$ 6,700-9,300



232

233

232

Collection of coral jewels

Comprising: a necklace of graduated coral beads measuring from approximately 12.15 to 18.50mm, length approximately 565mm accompanied by extra beads, a ring set with a coral bead, size N, and a pair of ear studs, post and butterfly fittings, a ring set with a cabochon coral within an open work mount, size N, and a pendant brooch of foliate motif set with cabochon coral and seed pearls.

Accompanied by analysis report.

Ω • £ 3,000-4,000 € 3,350-4,450 US\$ 4,000-5,300

233

Pair of coral, onyx and diamond earrings

Each barrel-shaped drop composed of coral and onyx, divided by a line of brilliant-cut diamonds, suspended from a millegrain-set brilliant-cut diamond and onyx surmount, French assay marks, post fittings.

• £ 3,500-4,500 € 3,900-5,000 US\$ 4,650-6,000



234

234

Diamond necklace

Designed as a snake, the front pavé-set with variously tinted brilliant-cut diamonds, *inner circumference approximately 385mm*.

Please note that the diamonds of coloured tint have not been tested for natural colour origin.

£ 8,000-12,000 € 8,900-13,300 US\$ 10,600-15,900

235

Diamond ring

Claw-set with a brilliant-cut diamond of brown tint weighing 4.80 carats, *size P*.

Please note that the diamond of brown tint has not been tested for natural colour origin.

£ 6,000-8,000 € 6,700-8,900 US\$ 8,000-10,600



235



236

236

Coral, diamond and onyx necklace and ring

The graduated coral bead necklace to a pendant set with carved black onyx roses and lilies set with brilliant-cut diamonds, suspending an onyx bead tassel. *length approximately 490mm, Italian maker's mark*; together with a ring of crossover design set with carved onyx and coral cabochons with brilliant-cut diamond shoulders, *size N*.

Accompanied by a gemmological report.

£ 2,000-3,000 € 2,250-3,350 US\$ 2,650-4,000





237



238



239

237

Cultured pearl, diamond and onyx demi-pareure, René Boivin

The necklace composed of three rows of cultured pearls connected by onyx and brilliant-cut diamond details, *length approximately 385mm*; the earrings similarly set, *clip fittings, French assay and maker's mark, pouch stamped René Boivin.*

£ 4,000-6,000 € 4,450-6,700 US\$ 5,300-8,000

238

Ruby and coin pendant, Bulgari

Set with a Roman coin, the collet inscribed Alexander the Great 336-323 Tetradrachm, within a pendant loop accented by two cabochon rubies, *length approximately 50mm, signed Bulgari.*

£ 2,000-3,000 € 2,250-3,350 US\$ 2,650-4,000

239

Lady's wristwatch, Chaumet

The rectangular white dial with Roman numerals, within a rectangular bezel, to tigers eye quartz bracelet, *length approximately 180mm, dial signed Chaumet, Swiss and French assay marks, maker's mark, numbered.*

£ 3,000-4,000 € 3,350-4,450 US\$ 4,000-5,300



240



241



242

240

Emerald and diamond necklace, 1960s

Designed as a graduated fringe, the textured links set with step-cut emeralds and brilliant-cut diamonds, *length approximately 398mm.*

£ 3,000-4,000 € 3,350-4,450 US\$ 4,000-5,300

241

Pair of sapphire and diamond ear clips, 1960s

Each designed as textured branch motifs arranged in a radiating design, claw-set with brilliant-cut diamonds and circular-cut sapphires, *clip fittings.*

£ 2,000-3,000 € 2,250-3,350 US\$ 2,650-4,000

242

Sapphire and diamond brooch, circa 1965

Of spray design, set with a pear-shaped and circular-cut diamonds, highlighted with circular-cut sapphires, *British hallmarks and maker's mark.*

£ 4,000-5,000 € 4,450-5,600 US\$ 5,300-6,700



243



244



245

244

Emerald and diamond ring

Collet-set with a step-cut emerald, within a cluster of claw-set circular-cut diamonds, size $L^{1/2}$.

£ 4,000-5,000 € 4,450-5,600 US\$ 5,300-6,700

243

Coral, emerald and diamond necklace, 1960s

The front set with polished coral, interspersed with twisted abstract panels set with marquise-shaped emeralds and circular-cut diamonds, inner circumference approximately 360mm.

• £ 4,000-6,000 € 4,450-6,700 US\$ 5,300-8,000

245

Citrine and diamond bracelet, Asprey,

Of abstract textured design, set with two rows of circular-cut citrines and marquise-shaped diamonds, length approximately 183mm, signed Asprey.

Ω £ 8,000-10,000 € 8,900-11,100 US\$ 10,600-13,300



246

247

246

Demi-parure, 'Delilah', Boucheron, circa 2005

Comprising: a necklace of woven design with tasselled ends, length approximately 1160mm; and a bracelet, length approximately 180mm; each signed Boucheron, numbered, French assay and maker's marks, gross weight approximately 172 grams, pouch stamped Boucheron.

£ 7,000-14,000 € 7,800-15,600 US\$ 9,300-18,600

247

Diamond demi-parure, Buccellati

Comprising: a pendent necklace and a pair of ear clips, the textured open work pendant of floral design, set with brilliant-cut diamonds, to a fancy link necklace, length approximately 420mm; the ear clips similarly set, clip and post fittings, each signed Buccellati, Italian maker's marks.

£ 3,500-4,500 € 3,900-5,000 US\$ 4,650-6,000



248



249

248

Mother-of-pearl, rock crystal, ruby and diamond necklace, Mappin & Webb

The front designed as a lion's head set with carved rock crystal supporting a circular-cut diamond, the mane set with brilliant-cut diamonds, the eyes and nose embellished with cabochon rubies, to a mother of pearl and diamond necklace, *inner circumference approximately 380mm, signed M&W, French assay and maker's marks.*

£ 3,000-5,000 € 3,350-5,600 US\$ 4,000-6,700

249

Lady's wristwatch, 'Ballon Bleu', Cartier

The circular engine turned silvered dial with Roman numerals, sweep centre seconds and date aperture, to blued steel hands, the bezel set with a double row of brilliant-cut diamonds, cabochon-sapphire crown, bracelet with concealed double deployant clasp, *inner circumference approximately 160mm, dial, case and bracelet signed Cartier, numbered, Swiss and European marks, maker's mark.*

£ 10,000-15,000 € 11,100-16,700 US\$ 13,300-19,900



250



251



252

250

Diamond cigarette case, Van Cleef & Arpels, 1940s

Of rectangular shape with guilloché pattern, applied scrolled push piece on side with matching opposite, set with brilliant-cut diamonds, opening up to reveal a compartment, *measuring approximately 10.9 x 7.9 x 10mm, signed Van Cleef & Arpels, numbered, French assay and maker's marks, gross weight approximately 179 grams, outer case stamped Van Cleef & Arpels.*

£ 5,000-7,000 € 5,600-7,800 US\$ 6,700-9,300

251

Turquoise, sapphire and diamond brooch, 1960s

Designed as a seahorse, its body set with polished turquoise, the fins set with brilliant-cut diamonds, the eye accented with a circular-cut sapphire.

£ 2,500-3,000 € 2,800-3,350 US\$ 3,350-4,000

252

Lady's diamond wristwatch, Baume & Mercier, 1960s

Designed as a series of leaf shaped links, each set with brilliant-cut diamonds, opening to reveal a rectangular dial with Arabic numerals, *length approximately 180mm, dial signed Baume & Mercier.*

£ 4,000-6,000 € 4,450-6,700 US\$ 5,300-8,000



253



254



255

253

Cultured pearl and diamond necklace

Composed of a row of cultured pearls above a row of spherical beads connected by ogee-shaped spacers, the front section highlighted with brilliant-cut diamonds, *length approximately 400mm.*

£ 3,500-4,500 € 3,900-5,000 US\$ 4,650-6,000

254

Pair of diamond ear clips 'Trika', Bulgari

Set with brilliant-cut diamonds, *signed Bulgari, Italian maker's mark, clip fittings.*

£ 4,000-6,000 € 4,450-6,700 US\$ 5,300-8,000

255

PROPERTY OF LADY OF TITLE

Lady's diamond wristwatch, Tank Française, Cartier

The rectangular cream dial with Roman numerals, secret signature at 'X' and blued steel hands, between brilliant-cut diamond borders, with diamond-set crown, link bracelet, *inner circumference approximately 155mm, dial, case and bracelet signed Cartier, numbered, Swiss and European assay and makers marks, case stamped Cartier.*

£ 4,000-6,000 € 4,450-6,700 US\$ 5,300-8,000



256



257



258

256

Diamond demi-parure

Comprising: a cuff of daisy motifs, the front pavé-set with brilliant-cut diamonds, *inner circumference approximately 175mm*; and a pair of ear clips similarly set, *post and clip fittings, each with Italian maker's marks*.

£ 8,000-12,000 € 8,900-13,300 US\$ 10,600-15,900

257

Diamond ring

Set with a brilliant-cut diamond of yellow orange tint, weighing 2.94 carats, *size M^{1/2}*.

Accompanied by a gemmological report.

£ 12,000-15,000 € 13,300-16,700 US\$ 15,900-19,900

258

Cultured pearl and diamond brooch

Designed as a palm tree, set throughout with brilliant-cut diamonds of yellow and near colourless tint and a cultured pearl.

Accompanied by a gemmological report.

£ 5,000-7,000 € 5,600-7,800 US\$ 6,700-9,300



259

259

Diamond and citrine brooch, Asprey

Designed as stylised palm-trees set with brilliant-cut diamonds, to pear-shaped citrine cluster centres, *signed Asprey*.

Ω £ 3,000-5,000 € 3,350-5,600 US\$ 4,000-6,700

260

Fancy Vivid Yellow diamond ring

Claw-set with a brilliant-cut fancy vivid yellow diamond weighing 0.96 carats, between baguette-cut diamond shoulders, *size J*.

Accompanied by GIA report no. 16304320, dated August 2007, stating that the diamond is Natural Fancy Vivid Yellow, SI1 Clarity.

£ 7,000-9,000 € 7,800-10,000 US\$ 9,300-12,000



261



260

261

Pair of multicoloured sapphire and diamond pendent earrings, Michael Young

Each of pendant design, suspending a concentric arrangement of clusters set with circular-cut and oval sapphires of various tints and brilliant-cut diamonds, *post and clip fittings, maker's marks for Michael Young*.

£ 4,800-5,500 € 5,400-6,100 US\$ 6,400-7,300



262

262

Diamond ring, Monture Cartier, 1994

Of tapered hoop design, to a central rub-over setting with a circular-cut diamond, *size L^{1/2}, signed Mtd Cartier London, numbered, London hallmarks for 1994, case stamped Cartier*.

£ 4,000-5,000 € 4,450-5,600 US\$ 5,300-6,700



263



265



264



266

263

Diamond and ruby brooch, 1950s

Of flower design set with cushion-shaped diamonds and calibré-cut rubies, *French assay and maker's mark*.

£ 3,200-4,600 € 3,550-5,100 US\$ 4,250-6,100

△ 265

Sapphire and diamond brooch, 1960s

Designed as a floral spray, set with circular-cut and oval sapphires and brilliant-cut diamonds, the stem and branches channel-set with baguette diamonds, one *diamond deficient*.

† £ 5,000-7,000 € 5,600-7,800 US\$ 6,700-9,300

264

Ruby and diamond ring

Of bombé design, set with a central line of graduated square rubies, between graduated baguette-cut diamond lines, size *J^{1/2}*, *maker's mark*.

£ 1,200-1,800 € 1,350-2,000 US\$ 1,600-2,400

266

Ruby and diamond brooch, 1960s

Of floral spray design set with circular-cut rubies and diamonds, to baguette and circular-cut diamond branches enhanced by circular-cut rubies.

£ 3,000-4,000 € 3,350-4,450 US\$ 4,000-5,300



267



268



269

267

Diamond necklace

The front suspending seven graduated circular-cut diamonds, the largest weighing 4.81 carats, with diamond-set foliate suspension, to a chain of elliptical links, interspersed by circular-cut diamonds, *length approximately 405mm.*

£ 24,000-32,000 € 26,600-35,500 US\$ 31,800-42,400

268

Diamond ring

Claw-set with a brilliant-cut diamond weighing 5.40 carats, to tapered shoulders, size Q, *British hallmarks and maker's mark.*

£ 20,000-30,000 € 22,200-33,300 US\$ 26,500-39,700

269

Diamond ring

Claw-set with a brilliant-cut diamond weighing 7.05 carats, size J^{1/2}.

£ 18,000-22,000 € 20,000-24,400 US\$ 23,900-29,200



270

270

Diamond brooch, 1930s

Designed as an abstract scroll, set with baguette and circular-cut diamonds, *French assay and partial maker's marks, possibly for Rubel Frères.*

£ 2,400-3,800 € 2,700-4,250 US\$ 3,200-5,100



271

271

Pair of emerald and diamond earrings

Each designed as a bow, set with baguette, marquise-shaped and brilliant-cut diamonds, suspending a drop-shaped emerald from a surmount pavé-set with brilliant-cut diamonds, *post fittings.*

Accompanied by a gemmological report.

£ 40,000-60,000 € 44,300-66,500 US\$ 53,000-79,500



272

272

Diamond ring

Claw-set with a marquise-shaped diamond weighing 3.93 carats, *size N¹/₂.*

Accompanied by GIA report no. 2155959737, stating that the diamond is D Colour, VS1 Clarity.

£ 35,000-40,000 € 38,800-44,300 US\$ 46,400-53,000



Lot 271 enlarged



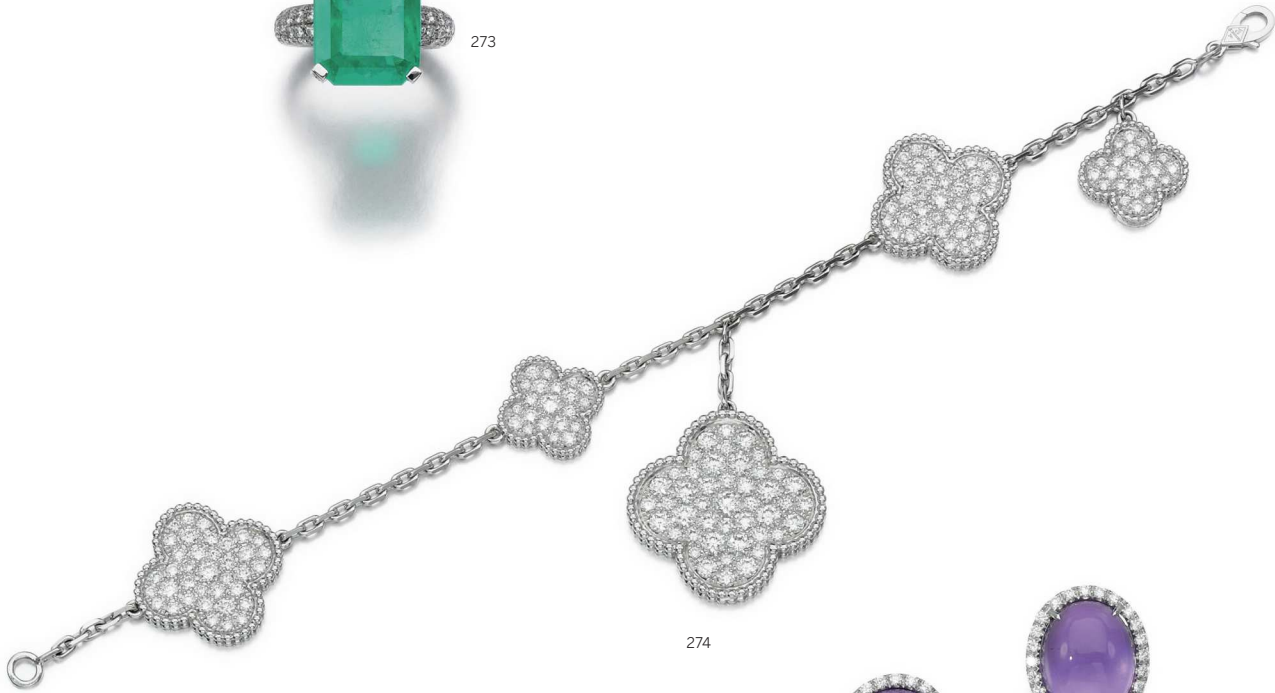
273

Emerald and diamond ring

Claw-set with a step-cut emerald and brilliant-cut diamonds, size O.

Accompanied by a gemmological report

£ 22,000-28,000 € 24,400-31,100 US\$ 29,200-37,100



274

Diamond bracelet, 'Magic Alhambra', Van Cleef & Arpels

Designed as a series of quatrefoil motifs, each pavé-set with brilliant-cut diamonds, within beaded frames, length approximately 190mm, signed VCA, numbered, French assay and makers mark.

£ 7,000-9,000 € 7,800-10,000 US\$ 9,300-12,000



275

Pair of amethyst and jadeite pendent earrings, Margherita Burgener

Each surmount set with a cabochon amethyst within a brilliant-cut diamond frame, suspending a detachable tapered carved and pierced lavender jadeite plaque highlighted with brilliant-cut diamonds, length approximately 75mm, post and clip fittings, signed Margherita Burgener. Italian assay and maker's mark, case signed Margherita Burgener.

Accompanied by a gemmological report.

£ 4,500-6,500 € 5,000-7,200 US\$ 6,000-8,700



276

276

Emerald and diamond necklace

Designed as a graduated line of polished emerald beads, with rondelle spacers and a spherical clasp set with brilliant-cut diamonds, *length approximately 575mm.*

£ 26,000-35,000 € 28,800-38,800 US\$ 34,500-46,400

277

277

Fancy Vivid Yellow diamond ring

Claw-set with a fancy vivid yellow cut-cornered rectangular modified brilliant-cut diamond weighing 1.09 carats, *size L.*

Accompanied by GIA report no. 17464447, dated July 2008, stating that the diamond is Natural Fancy Vivid Yellow.

£ 6,000-8,000 € 6,700-8,900 US\$ 8,000-10,600

278

278

Fancy Intense Yellow diamond ring

Claw-set with a cushion-shaped fancy intense yellow diamond weighing 3.03 carats, within a frame of brilliant-cut diamonds, *size I², sizing beads.*

Accompanied by GIA report no. 16162138, dated June 2007, stating that the diamond is Natural Fancy Intense Yellow, VS1 Clarity.

£ 20,000-30,000 € 22,200-33,300 US\$ 26,500-39,700



279

Emerald and diamond ring

Claw-set with a step-cut emerald weighing 8.14 carats, between shoulders set with triangular diamonds, size *N^{1/2}*.

Accompanied by Gübelin report no. 16020153, dated 25th February 2016, stating that the emerald is of Colombian origin, with indications of minor clarity enhancement.

£ 16,000-24,000 € 17,800-26,600 US\$ 21,200-31,800

280

Diamond necklace, 1920s

Set with brilliant-cut diamonds, to a marquise-shaped and brilliant-cut diamond clasp, *length approximately 380mm*.

£ 6,000-8,000 € 6,700-8,900 US\$ 8,000-10,600



281

Opal and diamond clip brooch, 1930s

The shield shaped plaque collet-set with a polished opal, baguette and circular-cut diamonds.

£ 5,000-7,000 € 5,600-7,800 US\$ 6,700-9,300



282

282

Emerald and diamond brooch, 1920s

Of horseshoe outline, set with a step-cut emerald, single- and circular-cut diamonds, highlighted with calibr -cut emeralds, *French assay and maker's marks.*

£ 7,000-9,000 € 7,800-10,000 US\$ 9,300-12,000

283

Diamond ring

Set with a circular-cut diamond, *size P^{1/2}.*

£ 2,000-3,000 € 2,250-3,350 US\$ 2,650-4,000



283



284



285

284

Emerald ring

Claw-set with a step-cut emerald, *size M^{1/2}.*

Accompanied by a gemmological report.

£ 6,000-8,000 € 6,700-8,900 US\$ 8,000-10,600

285

Diamond ring

Claw-set with a circular-cut diamond, *size O^{1/2}.*

£ 2,200-3,800 € 2,450-4,250 US\$ 2,950-5,100



286



287



288



289



286

Ruby and diamond ring

The raised mount claw-set with an oval ruby, within a frame of circular-cut and marquise-shaped diamonds, size *M^{1/2}*.

Accompanied by a gemmological report.

£ 3,500-5,500 € 3,900-6,100 US\$ 4,650-7,300

288

Ruby and diamond brooch

Designed as a feather, set with pear-shaped rubies and marquise-shaped and brilliant-cut diamonds, *Italian maker's mark*.

Accompanied by a gemmological report.

£ 1,600-2,400 € 1,800-2,700 US\$ 2,150-3,200

287

Ruby and diamond brooch

Of flower and tassel design, set with cabochon and calibré-cut rubies and circular-cut diamonds.

£ 5,000-7,000 € 5,600-7,800 US\$ 6,700-9,300

289

Emerald and diamond demi-parure

Comprising: a ring and a pair of earrings, the ring claw-set with a square emerald within a pear-shaped and brilliant-cut diamond surround, size *O^{1/2}*; the earrings similarly set, *post fittings*.

£ 3,000-4,000 € 3,350-4,450 US\$ 4,000-5,300



290



292



291

290

Ruby and diamond ring

Claw-set with a cabochon ruby within a tapered baguette and brilliant-cut diamond frame, size O.

£ 2,600-3,000 € 2,900-3,350 US\$ 3,450-4,000

291

Pair of diamond and emerald ear clips, 1950s

Each suspending a drop shaped fluted emerald from a surmount of scroll design, set with brilliant-cut and marquise-shaped diamonds.

£ 5,500-7,500 € 6,100-8,400 US\$ 7,300-10,000

292

Sapphire, ruby, emerald and diamond brooch

Of fan shape design, set with carved sapphires, rubies and an emerald, interspersed by collet-set brilliant-cut diamonds.

£ 4,000-6,000 € 4,450-6,700 US\$ 5,300-8,000



293



294

293

Pair of diamond pendant ear clips, 1950s

Each designed as a hoop set with single-cut diamonds, suspending a flexible four row tassel of circular-cut and baguette diamonds, *post and clip fittings*.

£ 3,000-4,000 € 3,350-4,450 US\$ 4,000-5,300

294

Gem set and diamond bracelet

Designed as a meandering vine set with carved emeralds, rubies and sapphires, accented with circular-cut diamonds and cabochon sapphires and rubies, to a pavé-set diamond clasp, *length approximately 186mm*.

£ 6,000-8,000 € 6,700-8,900 US\$ 8,000-10,600



Lot 294 enlarged



295

295

Sapphire, ruby and diamond brooch, Cartier, 1960s

Modelled as a cockatoo, the body set with carved sapphires and brilliant-cut diamonds and accented with blue enamel, the eyes set with oval rubies, resting on a perch set with baguette diamonds, *signed Cartier, numbered, French assay and maker's marks, fitted case stamped Cartier.*

Accompanied by a facsimile of the original purchase invoice form Cartier Monte Carlo, dated 24th March 1960.

The carved sapphires incorporated into this cockatoo brooch recall Cartier's seminal 'Tutti Frutti' designs. The carved stones that defined the 'Tutti Frutti' designs were acquired by Jacques Cartier over a series of trips to India, starting in 1911, where he was awarded commissions from figures such as the Maharajas of Patiala and Kapurthala to remount their jewellery collections in the contemporary Parisian style. The carved stones that Cartier found in these jewels soon found their way into his firm's designs, aimed at a western audience. Interpreted and arranged as leaves and fruit, they would often be incorporated into bracelets of meandering vines and clustered into *giardinetto* brooches.

The same carved motifs on the sapphires that had been employed as leaves and fruits in the 'Tutti Frutti' jewels of the mid 1920s were reimagined as feathers by the late 1940s, adorning the bodies of the increasingly realistic birds that were the result of Cartier's move towards naturalism around this time.

In this slightly later brooch, dating from the late 1950s, these carved sapphires represent the vivid blue plumage of a cockatoo, enhanced by roundels of blue enamel. The present brooch is therefore a self-referential fusion of Cartier's aesthetics across the 1920s and 1940s, playfully repurposing an earlier motif and applying it to a later design. Two comparable brooches from Cartier Paris, depicting a kingfisher and a rooster and dated 1956 and 1958 respectively, are illustrated in Franco Cologni and Eric Nussbaum, *Platinum by Cartier, Triumphs of the Jeweler's Art*, Harry N. Abrahams Inc., France, 1996, pg. 194 and 196.

For a complete version of this footnote, please see Sothebys.com.

£ 20,000-30,000 € 22,200-33,300 US\$ 26,500-39,700



296



297

296

PROPERTY FROM A BRITISH PRIVATE COLLECTION

Sapphire and diamond ring

Claw-set with a step-cut sapphire weighing 30.93 carats, the mount accented with single-cut diamonds, *indistinctively numbered, French assay mark, three diamonds deficient.*

Accompanied by a gemmological report.

£ 40,000-60,000 € 44,300-66,500 US\$ 53,000-79,500

297

Diamond ring

The claw-set brilliant-cut diamond weighing 16.80 carats, size O^{1/2}.

£ 26,000-32,000 € 28,800-35,500 US\$ 34,500-42,400

END OF SALE



Lots 295, 296 & 297 enlarged

Sotheby's EST. 1744

Collectors gather here.



Vivien.

THE VIVIEN LEIGH COLLECTION

Auction London 26 September 2017
Viewing 22 – 25 September

34-35 NEW BOND STREET, LONDON W1A 2AA
ENQUIRIES
JUSTIN.ROBERTS@SOTHEBYS.COM +44 (0)20 7293 5310
SOTHEBYS.COM/VIVIEN

DOWNLOAD SOTHEBY'S APP
FOLLOW US @SOTHEBYS



Sotheby's EST. 1744

Collectors gather here.

THE GEORGE DANIELS
SPACE TRAVELLERS' WATCH



GEORGE DANIELS

A unique and important yellow gold chronograph watch with Daniels' independent double-wheel escapement, Mean-solar and Sidereal time, age and phase of the Moon and equation of time indications.

Circa 1982 Space Travellers' Watch

Estimate £1,200,000–1,800,000

Fine Timepieces

Including George Daniels Masterpieces

London 19 September 2017

Viewing 15 – 18 September

34–35 NEW BOND STREET, LONDON W1A 2AA

ENQUIRIES +44 (0)20 7293 5776 LONDONWATCHES@SOTHEBYS.COM
SOTHEBYS.COM/WATCHES

DOWNLOAD SOTHEBY'S APP
FOLLOW US @SOTHEBYS



Sotheby's EST. 1744

Collectors gather here.

Fine Timepieces Online
Bidding live 12-25 September 2017
sothebys.com/finetimepieceslondon



ENQUIRIES
JOANNE LEWIS
JOANNE.LEWIS@SOTHEBYS.COM
+44 (0)20 7293 5237

DOWNLOAD SOTHEBY'S APP
FOLLOW US @SOTHEBYS





Sotheby's

ABSENTEE/TELEPHONE BIDDING FORM

Sale Number L17058 | **Sale Title** FINE JEWELS | **Sale Date** 20 SEPTEMBER 2017

Please see the important information regarding absentee bidding on the reverse of this form.
Forms should be completed in ink and emailed, mailed or faxed to the Bid Department at the details below.

SOTHEBY'S ACCOUNT NUMBER (IF KNOWN)

TITLE	FIRST NAME	LAST NAME
COMPANY NAME		
ADDRESS		
	POSTAL CODE	COUNTRY
DAYTIME PHONE	MOBILE PHONE	FAX
EMAIL		

Please indicate how you would like to receive your invoices: Email Post/Mail

Telephone number during the sale (telephone bids only) _____

Please write clearly and place your bids as early as possible, as in the event of identical bids, the earliest bid received will take precedence. Bids should be submitted in pounds sterling and all bid requests should be submitted at least 24 hrs before the auction. Telephone bids are offered for lots with a minimum low estimate of £3,000.

LOT NUMBER	LOT DESCRIPTION	MAXIMUM STERLING PRICE OR ✓ FOR PHONE BID (EXCLUDING PREMIUM AND TAX)
		£
		£
		£
		£
		£
		£
		£
		£
		£
		£

We will send you a shipping quotation for this and future purchases unless you select one of the check boxes below. Please provide the name and address for shipment of your purchases, if different from above.

NAME AND ADDRESS _____

POSTAL CODE _____ COUNTRY _____

- I will collect in person I authorise you to release my purchased property to my agent/shipper (provide name)
- Send me a shipping quotation for purchases in this sale only

I agree to be bound by Sotheby's "Conditions of Business" and the information set out overleaf in the Guide for Absentee and Telephone Bidders, which is published in the catalogue for the sale. I consent to the use of this information and any other information obtained by Sotheby's in accordance with the Guide for Absentee and Telephone Bidders and Conditions of Business.

SIGNATURE _____

PRINT NAME _____ DATE _____

GUIDE FOR ABSENTEE AND TELEPHONE BIDDERS

If you are unable to attend an auction in person, you may give Sotheby's Bid Department instructions to bid on your behalf by completing the form overleaf. This service is confidential and available at no additional charge.

General

Before the Auction We will try and purchase the lot(s) of your choice for the lowest price possible (dependent on the reserve price and other bids) and never for more than the maximum bid amount you indicate. Where appropriate, your bids will be rounded down to the nearest amount consistent with the auctioneer's bidding increments.

Please place your bids as early as possible, as in the event of identical absentee bids the earliest received will take precedence. Bids should be submitted at least twenty-four hours before the auction.

If bidding by telephone, we suggest that you leave a maximum bid which we can execute on your behalf in the event we are unable to reach you.

Please refer to Condition 5 of the Conditions of Business printed in this catalogue.

After the Auction Successful bidders will receive an invoice detailing their purchases and giving instructions for payment and clearance of goods.

If you are bidding for items marked with a 'W' in the catalogue, we recommend you contact us on the afternoon of the sale to check whether you have been successful. These items will be sent to Sotheby's Greenford Park Fine Art Storage Facility immediately following the sale and therefore buyers are requested to arrange early collection of their goods as they will be subject to handling and storage charges after 30 days.

Without Reserve Lots Where a lot is offered "without reserve" absentee bids will be executed at a minimum of 10% of the low estimate.

Completing This Form

This form should be used for one sale only. Please indicate the sale number, sale title and sale date in the space provided at the top of the form if it is not already pre-populated.

Please record accurately the lot numbers, descriptions and the maximum hammer price you are willing to pay for each lot. Instructions to "BUY" or unlimited bids will not be accepted.

Bids must be numbered in the same order as the lots appear in the catalogue.

Alternate bids for items can be made by placing the word "OR" between lot numbers. This means if your bid on an early lot is successful, we will not continue to bid on subsequent lots for you. Or, if your early bids are unsuccessful, we will continue to execute bids for the remaining lots listed on your absentee bidding form.

If you are arranging a telephone bid, please clearly specify the telephone number on which you can be reached at the time of the sale, including the country code. We will call you from the saleroom shortly before the relevant lot is offered.

New Clients

If you have opened a new account with Sotheby's since 1 December 2002, and have not already provided appropriate identification, you will be asked to present documentation confirming your identity before your property or sale proceeds can be released to you. We may also contact you to request a bank reference.

Please provide government issued photographic identification such as a passport, identity card or driver's licence and confirm your permanent address.

Conditions of Absentee & Telephone Bidding

Please note that the execution of absentee and telephone bids is offered as an additional service for no extra charge. Such bids are executed at the bidder's risk and undertaken subject to Sotheby's other commitments at the time of the auction. Sotheby's therefore cannot accept liability for any reasonable error or failure to place such bids.

All bids are subject to the Conditions of Business applicable to the sale printed in the sale catalogue. Buyer's premium in the amount stated in paragraph 2 of Buying at Auction in the back of the sale catalogue will be added to the hammer price as part of the total purchase price, plus any applicable taxes and charges.

Bids will be executed for the lowest price as is permitted by other bids or reserves.

Where appropriate your written bids will be rounded down to the nearest amount consistent with the auctioneer's bidding increments.

Payment

In the event that you are successful, payment is due immediately after the sale unless otherwise agreed in advance. Payment may be made by bank transfer, credit and debit card (subject to certain restrictions and/or surcharges), cheque or cash (up to US\$10,000 equivalent). You will be sent full details on how to pay with your invoice.

Data Protection

From time to time, Sotheby's may ask clients to provide personal information about themselves or obtain information about clients from third parties (e.g. credit information). If you provide Sotheby's with information that is defined by law as "sensitive", you agree that Sotheby's Companies may use it: in connection with the management and operation of our business and the marketing and supply of Sotheby's Companies' services, or as required by law. Sotheby's Companies will not use or process sensitive information for any other purpose without your express consent. If you would like further information on Sotheby's policies on personal data, to opt out of receiving marketing material, or to make corrections to your information please contact us on +44 (0)20 7293 6667.

In order to fulfil the services clients have requested, Sotheby's may disclose information to third parties (e.g. shippers). Some countries do not offer equivalent legal protection of personal information to that offered within the EU. It is Sotheby's policy to require that any such third parties respect the privacy and confidentiality of our clients' information and provide the same level of protection for clients' information as provided within the EU, whether or not they are located in a country that offers equivalent legal protection of personal information. By signing this Absentee and Telephone Bidding Form you agree to such disclosure. Please note that for security purposes Sotheby's premises are subject to video recording. Telephone calls e.g. telephone bidding/voicemail messages may also be recorded.

BUYING AT AUCTION

The following pages are designed to give you useful information on how to buy at auction. Sotheby's staff as listed at the front of this catalogue will be happy to assist you. However, it is important that you read the following information carefully and note that Sotheby's acts for the seller; you should refer in particular to Conditions 3 and 4 of the Conditions of Business for Buyers printed in this catalogue. Prospective bidders should also consult www.sothebys.com for the most up to date cataloguing of the property in this catalogue.

Buyer's Premium A buyer's premium will be added to the hammer price and is payable by the buyer as part of the total purchase price. The buyer's premium is 25% of the hammer price up to and including £175,000; 20% on any amount in excess of £175,000 up to and including £2,000,000; and 12.5% on any remaining amount in excess of £2,000,000. These rates are exclusive of any applicable VAT.

1. BEFORE THE AUCTION

Catalogue Subscriptions If you would like to take out a catalogue subscription, please ring +44 (0)20 7293 5000.

Pre-sale Estimates Pre-sale estimates are intended as a guide for prospective buyers. Any bid between the high and low pre-sale estimates would, in our opinion, offer a chance of success. However, lots can realise prices above or below the pre-sale estimates.

It is advisable to consult us nearer the time of sale as estimates can be subject to revision. The estimates printed in the auction catalogue do not include the buyer's premium or VAT.

Pre-sale Estimates in US Dollars and Euros Although the sale is conducted in pounds sterling, the pre-sale estimates in some catalogues are also printed in US dollars and/or euros. The rate of exchange is the rate at the time of production of this catalogue. Therefore, you should treat the estimates in US dollars or euros as a guide only.

Condition of Lots Prospective buyers are encouraged to inspect the property at the pre-sale exhibitions. Solely as a convenience, Sotheby's may also provide condition reports. The absence of reference to the condition of a lot in the catalogue description does not imply that the lot is free from faults or imperfections. Please refer to Condition 3 of the Conditions of Business for Buyers printed in this catalogue.

Electrical and Mechanical Goods All electrical and mechanical goods are sold on the basis of their artistic and decorative value only, and should not be assumed to be operative. It is essential that prior to any intended use, the electrical system is checked and approved by a qualified electrician.

Provenance In certain circumstances, Sotheby's may print in the catalogue the history of ownership of a work of art if such information contributes to scholarship or is otherwise well known and assists in distinguishing the work of art. However, the identity of the seller or previous owners may not be disclosed for a variety of reasons. For example, such information

may be excluded to accommodate a seller's request for confidentiality or because the identity of prior owners is unknown given the age of the work of art.

2. DURING THE AUCTION

Conditions of Business The auction is governed by the Conditions of Business and Authenticity Guarantee. These apply to all aspects of the relationship between Sotheby's and actual and prospective bidders and buyers. Anyone considering bidding in the auction should read them carefully. They may be amended by way of notices posted in the saleroom or by way of announcement made by the auctioneer.

Bidding at Auction Bids may be executed in person by paddle during the auction, in writing prior to the sale, by telephone or by BIDnow.

Auction speeds vary, but average between 50 and 120 lots per hour. The bidding steps are generally in increments of approximately 10% of the previous bid.

Please refer to Conditions 5 and 6 of the Conditions of Business for Buyers printed in this catalogue.

Bidding in Person To bid in person, you will need to register for and collect a numbered paddle before the auction begins. Proof of identity will be required. If you have a Sotheby's Client Card, it will facilitate the registration process.

Should you be the successful buyer of a lot, please ensure that your paddle can be seen by the auctioneer and that it is your number that is called out. Should there be any doubts as to price or buyer, please draw the auctioneer's attention to it immediately.

All lots sold will be invoiced to the name and address in which the paddle has been registered and cannot be transferred to other names and addresses.

Please do not mislay your paddle; in the event of loss, inform the Sales Clerk immediately. At the end of the sale, please return your paddle to the registration desk.

Absentee, Telephone and Internet Bids If you cannot attend the auction, we will be happy to execute written bids on your behalf or you can bid on the telephone for lots with a minimum low estimate of £3,000 or you can bid online using BIDnow. A bidding form and more information can be found at the back of this catalogue.

Online Bidding via BIDnow If you cannot attend the auction, it may be possible to bid online via BIDnow for selected sales. This service is free and confidential. For information about registering to bid via BIDnow, please refer to sothebys.com. Bidders using the BIDnow service are subject to the Additional Terms and Conditions for Live Online Bidding via BIDnow, which can be viewed at sothebys.com, as well as the Conditions of Business applicable to the sale.

Consecutive and Responsive Bidding The auctioneer may open the bidding on any lot by placing a bid on behalf of the seller. The auctioneer may further bid on behalf of the seller, up to the amount of the reserve, by placing consecutive or responsive bids for a lot. Please refer to Condition 6 of the Conditions of Business for Buyers printed in this catalogue.

Interested Parties Announcement In situations where a person who is allowed to bid on a lot has a direct or indirect interest in such lot, such as the beneficiary or executor of an estate selling the lot, a joint owner of the lot, or a party providing or participating in a guarantee of the lot, Sotheby's will make an announcement in the saleroom that interested parties may bid on the lot. In certain instances, interested parties may have knowledge of the reserves.

Employee Bidding Sotheby's employees may bid only if the employee does not know the reserve and fully complies with Sotheby's internal rules governing employee bidding.

US Economic Sanctions The United States maintains economic and trade sanctions against targeted foreign countries, groups and organisations. There may be restrictions on the import into the United States of certain items originating in sanctioned countries, including Burma, Cuba, Iran, North Korea and Sudan. The purchaser's inability to import any item into the US or any other country as a result of these or other restrictions shall not justify cancellation or rescission of the sale or any delay in payment. Please check with the specialist department if you are uncertain as to whether a lot is subject to these import restrictions, or any other restrictions on importation or exportation.

3. AFTER THE AUCTION

Payment Payment is due immediately after the sale and may be made by Sterling Wire Transfer or Sterling Cheque. Payments by Sterling Cash and by Credit/Debit Cards are also accepted subject to certain restrictions and/or surcharges – please see below.

- It is against Sotheby's general policy to accept single or multiple related payments in the form of cash or cash equivalents in excess of the local currency equivalent of US\$10,000.
- It is Sotheby's policy to request any new clients or buyers preferring to make a cash payment to provide: proof of identity (by providing some form of government issued identification containing a photograph, such as a passport, identity card or driver's licence) and confirmation of permanent address. Thank you for your co-operation.

Cheques should be made payable to Sotheby's. Although personal and company cheques drawn in pounds sterling on UK banks are accepted, you are advised that property will not be released until such cheques have cleared unless you have a pre-arranged Cheque Acceptance Facility. Forms to facilitate this are available from the Post Sale Services Department.

Bank transfers Our bank account details are shown on our invoices. Please include your name, Sotheby's account number and invoice number with your instructions to your bank. Please note that we reserve the right to decline payments received from anyone other than the buyer of record and that clearance of such payments will be required. Please contact our Post Sale Services Department if you have any questions concerning clearance.

Card payment Sotheby's accepts payment by Visa, MasterCard, American Express and CUP credit and debit cards. Card payments may not exceed £30,000 per sale. All cards are accepted in person at Sotheby's premises at the address noted in the catalogue. With the exception of CUP, card payments may also be made online at <http://www.sothebys.com/en/invoice-payment.html> or by calling Post Sale Services at +44 (0)20 7293 5220.

We reserve the right to seek identification of the source of funds received.

The Conditions of Business require buyers to pay immediately for their purchases. However, in limited circumstances and with the seller's agreement, Sotheby's may grant buyers it deems creditworthy the option of paying for their purchases on an extended payment term basis. Generally credit terms must be arranged prior to the sale. In advance of determining whether to grant the extended payment terms, Sotheby's may require credit references and proof of identity and residence.

Collection It is Sotheby's policy to request proof of identity on collection of a lot. Lots will be released to you or your authorised representative when full and cleared payment has been received by Sotheby's. If you are in doubt about the location of your purchases, please contact the Sale Administrator prior to arranging collection. Removal, storage and handling charges may be levied on uncollected lots. Please refer to Condition 7 of the Conditions of Business for Buyers printed in this catalogue.

Storage Storage and handling charges may apply. For information concerning post sale storage and charges, please see Sotheby's Greenford Park, Storage and Collection Information at the back of this catalogue. Please refer to Condition 7 of the Conditions of Business for Buyers printed in this catalogue.

All purchases remaining at our New Bond Street premises 90 days after the sale will be transferred to Sotheby's Greenford Park Fine Art Storage (see Sotheby's Greenford Park, Storage and Collection information). All such purchases will be subject to further storage and handling charges from this point.

Loss or Damage Buyers are reminded that Sotheby's accepts liability for loss or damage to lots for a maximum period of thirty (30) days after the date of the auction. Please refer to Condition 7 of the Conditions of Business for Buyers printed in this catalogue.

Shipping Sotheby's offers a comprehensive shipping service. Except if otherwise indicated in this Buying At Auction Guide, our Shipping Department can advise buyers on exporting and shipping property, and arranging delivery. For assistance please contact:
Post Sale Services (Mon-Fri 9am to 5pm)
Tel +44 (0)20 7293 5220
Fax +44 (0)20 7293 5910
Email: ukpostsaleservices@sothebys.com

We will send you a quotation for shipping your purchase(s). Transit risk insurance may also be included in your quotation. If the quotation is accepted, we will arrange the shipping for you and will

despatch the property as soon as possible after receiving your written agreement to the terms of the quotation, financial release of the property and receipt of any export licence or certificates that may be required. Despatch will be arranged at the buyer's expense. Sotheby's may charge an administrative fee for arranging the despatch.

All shipments should be unpacked and checked on delivery and any discrepancies notified immediately to the party identified in your quotation and/or the accompanying documentation.

Export The export of any lot from the UK or import into any other country may be subject to one or more export or import licences being granted. It is the buyer's responsibility to obtain any relevant export or import licence. The denial of any licence required or delay in obtaining such licence cannot justify the cancellation of the sale or any delay in making payment of the total amount due.

Sotheby's, upon request and for an administrative fee, may apply for a licence to export your lot(s) outside the UK

- An EU Licence is necessary to export cultural goods subject to the EU Regulation on the export of cultural property (EEC No. 3911/92, Official Journal No. L395 of 31/12/92) from the European Community.
- A UK Licence is necessary to move cultural goods valued at or above the relevant UK Licence limits from the UK.

For export outside the European Community, an EU Licence will be required for most items over 50 years of age with a value of over £39,219. The following is a selection of categories of items for which other value limits apply and for which an EU Licence may be required. It is not exhaustive and there are other restrictions.

EU Licence Thresholds

Archaeological objects

EU LICENCE THRESHOLD: ZERO

Elements of artistic, historical or religious monuments

EU LICENCE THRESHOLD: ZERO

Manuscripts, documents and archives (excluding printed matter)

EU LICENCE THRESHOLD: ZERO

Architectural, scientific and engineering drawings produced by hand

EU LICENCE THRESHOLD: £11,766

Photographic positive or negative or any assemblage of such photographs

EU LICENCE THRESHOLD: £11,766

Textiles (excluding carpets and tapestries)

EU LICENCE THRESHOLD: £39,219

Paintings in oil or tempera

EU LICENCE THRESHOLD: £117,657

Watercolours, gouaches and pastels

EU LICENCE THRESHOLD: £23,531

Prints, Engravings, Drawings and Mosaics

EU LICENCE THRESHOLD: £11,766

There are separate thresholds for exporting within the European Community. A UK Licence will be required for most items over 50 years of age with a value of over £65,000. Some exceptions are listed below:-

UK Licence Thresholds

Photographic positive or negative or any assemblage of such photographs

UK LICENCE THRESHOLD: £10,000

Textiles (excluding carpets and tapestries)

UK LICENCE THRESHOLD: £12,000

British Historical Portraits

UK LICENCE THRESHOLD: £10,000

Sotheby's recommends that you retain all import and export papers, including licences, as in certain countries you may be required to produce them to governmental authorities.

Endangered Species Items made of or incorporating plant or animal material, such as coral, crocodile, ivory, whalebone, tortoiseshell, etc., irrespective of age or value, may require a licence or certificate prior to exportation and require additional licences or certificates upon importation to any country outside the EU. Please note that the ability to obtain an export licence or certificate does not ensure the ability to obtain an import licence or certificate in another country, and vice versa. For example, it is illegal to import African elephant ivory into the United States and there are other restrictions on the importation of ivory into the US under certain US regulations which are designed to protect wildlife conservation.

Sotheby's suggests that buyers check with their own government regarding wildlife import requirements prior to placing a bid. It is the buyer's responsibility to obtain any export or import licences and/or certificates as well as any other required documentation (please refer to Condition 10 of the Conditions of Business for Buyers printed in this catalogue). Please note that Sotheby's is not able to assist buyers with the shipment of any lots containing ivory and/or other restricted materials into the US. A buyer's inability to export or import these lots cannot justify a delay in payment or a sale's cancellation.

EXPLANATION OF SYMBOLS

The following key explains the symbols you may see inside this catalogue.

◊ Guaranteed Property

The seller of lots with this symbol has been guaranteed a minimum price from one auction or a series of auctions. This guarantee may be provided by Sotheby's or jointly by Sotheby's and a third party. Sotheby's and any third parties providing a guarantee jointly with Sotheby's benefit financially if a guaranteed lot is sold successfully and may incur a loss if the sale is not successful. If the Guaranteed Property symbol for a lot is not included in the printing of the auction catalogue, a pre-sale or pre-lot announcement will be made indicating that there is a guarantee on the lot. If every lot in a catalogue is guaranteed, the Important Notices in the sale catalogue will so state and this symbol will not be used for each lot.

▲ Property in which Sotheby's has an Ownership Interest

Lots with this symbol indicate that Sotheby's owns the lot in whole or in part or has an economic interest in the lot equivalent to an ownership interest.

⇒ Irrevocable Bids

Lots with this symbol indicate that a party has provided Sotheby's with an irrevocable bid on the lot that will be executed during the sale at a value that ensures that the lot will sell. The irrevocable bidder, who may bid in excess of the irrevocable bid, may be compensated for providing the irrevocable

bid by receiving a contingent fee, a fixed fee or both. If the irrevocable bidder is the successful bidder, any contingent fee, fixed fee or both (as applicable) for providing the irrevocable bid may be netted against the irrevocable bidder's obligation to pay the full purchase price for the lot and the purchase price reported for the lot shall be net of any such fees. If the irrevocable bid is not secured until after the printing of the auction catalogue, Sotheby's will notify bidders that there is an irrevocable bid on the lot by one or more of the following means: a pre-sale or pre-lot announcement, by written notice at the auction or by including an irrevocable bid symbol in the e-catalogue for the sale prior to the auction. If the irrevocable bidder is advising anyone with respect to the lot, Sotheby's requires the irrevocable bidder to disclose his or her financial interest in the lot. If an agent is advising you or bidding on your behalf with respect to a lot identified as being subject to an irrevocable bid, you should request that the agent disclose whether or not he or she has a financial interest in the lot.

∟ Interested Parties

Lots with this symbol indicate that parties with a direct or indirect interest in the lot may be bidding on the lot, including (i) the beneficiary of an estate selling the lot, or (ii) the joint owner of a lot. If the interested party is the successful bidder, they will be required to pay the full Buyer's Premium. In certain instances, interested parties may have knowledge of the reserve. In the event the interested party's possible participation in the sale is not known until after the printing of the auction catalogue, a pre-lot announcement will be made indicating that interested parties may be bidding on the lot.

□ No Reserve

Unless indicated by a box (□), all lots in this catalogue are offered subject to a reserve. A reserve is the confidential hammer price established between Sotheby's and the seller and below which a lot will not be sold. The reserve is generally set at a percentage of the low estimate and will not exceed the low estimate for the lot. If any lots in the catalogue are offered without a reserve, these lots are indicated by a box (□). If all lots in the catalogue are offered without a reserve, a Special Notice will be included to this effect and the box symbol will not be used for each lot.

⊕ Property Subject to the Artist's Resale Right

Purchase of lots marked with this symbol (⊕) will be subject to payment of the Artist's Resale Right, at a percentage of the hammer price calculated as follows:

Portion of the hammer price (in €)

Royalty Rate	
From 0 to 50,000	4%
From 50,000.01 to 200,000	3%
From 200,000.01 to 350,000	1%
From 350,000.01 to 500,000	0.5%
Exceeding 500,000	0.25%

The Artist's Resale Right payable will be the aggregate of the amounts payable under the above rate bands, subject to a maximum royalty payable of 12,500 euros for any single work each time it is sold. The maximum royalty payable of 12,500 euros applies to works sold for 2 million euros and above. Calculation

of the artist's resale right will be based on the pound sterling / Euro reference exchange rate quoted on the date of the sale by the European Central Bank.

● Restricted Materials

Lots with this symbol have been identified at the time of cataloguing as containing organic material which may be subject to restrictions regarding import or export. The information is made available for the convenience of Buyers and the absence of the Symbol is not a warranty that there are no restrictions regarding import or export of the Lot; Bidders should refer to Condition 10 of the Conditions of Business for Buyers. Please also refer to the section on Endangered Species in the Buying at Auction Guide. As indicated in the Endangered Species section, Sotheby's is not able to assist buyers with the shipment of any lots with this symbol into the US. A buyer's inability to export or import any lots with this symbol cannot justify a delay in payment or a sale's cancellation.

⌈ Monumental

Lots with this symbol may, in our opinion, require special handling or shipping services due to size or other physical considerations. Buyers are advised to inspect the lot and to contact Sotheby's prior to the sale to discuss any specific shipping requirements.

Please refer to VAT information for Buyers for VAT symbols used in this catalogue.

Value Added Tax (VAT) may be payable on the hammer price and/or the buyer's premium. Buyer's premium may attract a charge in lieu of VAT. Please read carefully the "VAT INFORMATION FOR BUYERS" printed in this catalogue.

VAT AND OTHER TAX INFORMATION FOR BUYERS

The following paragraphs are intended to give general guidance to buyers on the VAT and certain other potential tax implications of purchasing property at Sotheby's. The information concerns the most usual circumstances and is not intended to be complete. In all cases the relevant tax legislation takes precedence and the VAT rates in effect on the day of the auction will be the rates charged except for lots sold subject to Temporary Admission for which the applicable rate will be that in force at the time of collection. It should be noted that, for VAT purposes only, Sotheby's is not usually treated as an agent and most property is sold as if it is the property of Sotheby's.

In the following paragraphs, reference to VAT symbols shall mean those symbols located beside the lot number or the pre-sale estimates in the catalogue (or amending sale room notice).

1. PROPERTY WITH NO VAT SYMBOL

Where there is no VAT symbol, Sotheby's is able to use the Auctioneer's Margin Scheme and VAT will not normally be charged on the hammer price.

Sotheby's must bear VAT on the buyer's premium and hence will charge an amount in lieu of VAT at the standard rate on this premium. This amount will form part of the buyer's premium on our invoice and will not be separately identified. A limited range of goods, including most books, are not liable

to VAT and therefore no amount in lieu of VAT will be added to the premium.

Please see 'Exports from the European Union' for the conditions to be fulfilled before the amount in lieu of VAT on the buyer's premium may be cancelled or refunded.

(VAT-registered buyers from within the European Union (EU) should note that the amount in lieu of VAT contained within the buyer's premium cannot be cancelled or refunded by Sotheby's or HM Revenue and Customs.)

Buyers requiring an invoice under the normal VAT rules, instead of a margin scheme invoice, should notify the Post Sale Service Group or the Client Accounts Department on the day of the auction and an invoice with VAT on the hammer price will be raised. Buyers requiring re-invoicing under the normal VAT rules subsequent to a margin scheme invoice having been raised should contact the Client Accounts Department for assistance.

2. PROPERTY WITH A † SYMBOL

These items will be sold under the normal UK VAT rules and VAT will be charged at the standard rate on both the hammer price and buyer's premium.

Please see 'Exports from the European Union' for the conditions to be fulfilled before the VAT charged on the hammer price may be cancelled or refunded.

(VAT-registered buyers from other EU countries may have the VAT cancelled or refunded if they provide Sotheby's with their VAT registration number and evidence that the property has been removed from the UK within three months of the date of sale. The evidence of removal required is a certificate of shipment or, if the lots were carried by hand, proof of travel and completion of a form available from the Post Sale Service Group.

3. PROPERTY WITH A α SYMBOL

Items sold to buyers whose address is in the EU will be assumed to be remaining in the EU. The property will be invoiced as if it had no VAT symbol (see 'Property with no VAT symbol' above). However, if the property is to be exported from the EU, Sotheby's will re-invoice the property under the normal VAT rules (see 'Property sold with a † symbol' above) as requested by the seller.

Items sold to buyers whose address is outside the EU will be assumed to be exported from the EU. The property will be invoiced under the normal VAT rules (see 'Property sold with a † symbol' above). Although the hammer price will be subject to VAT this will be cancelled or refunded upon export - see 'Exports from the European Union'. However, buyers who are not intending to export their property from the EU should notify our Client Accounts Department on the day of the sale and the property will be re-invoiced showing no VAT on the hammer price (see 'Property sold with no VAT symbol' above).

4. PROPERTY SOLD WITH A ‡ OR Ω SYMBOL

These items have been imported from outside the EU to be sold at auction under Temporary Admission. When Sotheby's releases such property to buyers in the UK, the buyer will become the importer

and must pay Sotheby's import VAT at the following rates on the hammer price:

- ‡ - the reduced rate
- Ω - the standard rate

You should also note that the appropriate rate will be that in force on the date of collection of the property from Sotheby's and not that in force at the date of the sale.

These lots will be invoiced under the margin scheme. Sotheby's must bear VAT on the buyer's premium and hence will charge an amount in lieu of VAT at the standard rate on this premium. This amount will form part of the buyer's premium on our invoice and will not be separately identified.

(VAT-registered buyers from the EU should note that the import VAT charged on property released in the UK cannot be cancelled or refunded by Sotheby's, however you may be able to seek repayment) by applying to HM Revenue and Customs - see 'VAT Refunds from HM Revenue and Customs')

(VAT-registered buyers from the UK should note that the invoice issued by Sotheby's for these items is not suitable evidence in respect of import VAT.)

On request, immediately after sale, the Temporary Admission Department can either ask HM Revenue and Customs to generate a C79 certificate (for UK buyers), or obtain a copy of the import C88 (for other EU VAT registered buyers), which may be used to claim recovery of the VAT. Otherwise Sotheby's may re-invoice the lot as if it had been sold with a † symbol and charge VAT at the standard rate on both the hammer price and premium and provide a tax invoice to the buyer. This may enable a buyer who is VAT registered elsewhere in the EU to avoid payment of VAT in the United Kingdom. Re-invoicing in this way may make the lot ineligible to be re-sold using the margin scheme.

Sotheby's will transfer all lots sold subject to Temporary Admission to its Customs warehouse immediately after sale.

5. EXPORTS FROM THE EUROPEAN UNION

The following amounts of VAT may be cancelled or refunded provided Sotheby's receive the appropriate export documents within the time limits stated:

Property with no VAT symbol (see paragraph 1)

The amount in lieu of VAT charged on Buyer's Premium may be refunded provided the purchaser resides outside of the United Kingdom and the property is exported from the EU within 3 months of the sale. Sotheby's must be provided with the appropriate proof of export immediately after export of the goods.

Property with a † symbol

The VAT charged upon the hammer price may be refunded provided the purchaser resides outside of the United Kingdom and the property is exported from the EU within 3 months of the sale. Sotheby's must be provided with the appropriate proof of export immediately after export of the goods.

Property with a ‡ or a Ω symbol

The Temporary Admission VAT charged on

the hammer price may be refunded under the following circumstances:-

- Sotheby's is instructed to ship the property to a place outside the EU
- The property is hand carried from the UK directly outside the EU and Sotheby's pre lodge the export entry with HMRC
- The VAT liability is transferred to your shipper's own Temporary Admission or Customs Warehouse arrangement prior to collection from Sotheby's

Under all other circumstances Sotheby's is required to complete the importation and pay the VAT due to HM Revenue and Customs prior to the property leaving its premises and so a VAT refund will not be possible.

Proof of export required

- for lots sold under the margin scheme (no VAT symbol) or the normal VAT rules († symbol), Sotheby's is provided with appropriate documentary proof of export from the EU. Buyers carrying their own property should obtain hand-carry papers from the Shipping department to facilitate this process.
- for lots sold under Temporary Admission (‡ or Ω symbols), and subsequently transferred to Sotheby's Customs Warehouse (into Bond). The property must be shipped as described above in the paragraph headed Property with a ‡ or a Ω symbol.
- buyers carrying their own property must obtain hand-carry papers from the Shipping Department for which a small administrative charge will be made. The VAT refund will be processed once the appropriate paperwork has been returned to Sotheby's.
- Sotheby's is not able to cancel or refund any VAT charged on sales made to UK or EU private residents unless the lot is subject to Temporary Admission and the property is exported from the EU and the requisite export papers provided to Sotheby's within one month of collection of the property.
- Sotheby's is not able to cancel or refund any VAT charged on sales to UK or EU private residents unless the lot is subject to Temporary Admission and is shipped as described above.

Buyers intending to export, repair, restore or alter lots sold under Temporary Admission (‡ or Ω symbols) and therefore transferred to Customs Warehouse after sale should notify the Shipping Department before collection. Failure to do so may result in the import VAT becoming payable immediately and Sotheby's being unable to refund the VAT charged on deposit.

6. VAT REFUNDS FROM HM REVENUE AND CUSTOMS

Where VAT charged cannot be cancelled or refunded by Sotheby's, it may be possible to seek repayment from HM Revenue and Customs. Repayments in this manner are limited to businesses located outside the UK.

Claim forms are available from:

HM Revenue and Customs
VAT Overseas Repayments Unit
PO Box 34, Foyle House
Duncreggan Road, Londonderry
Northern Ireland, BT48 7AE
Tel: +44 (0)2871 305100
Fax: +44 (0)2871 305101

enq.oru.ni@hmrc.gsi.gov.uk

7. SALES AND USE TAXES

Buyers from outside the UK should note that local sales taxes or use taxes may become payable upon import of items following purchase (for example, the Use Tax payable on import of purchased items to certain states of the USA). Buyers should obtain their own advice in this regard.

Sotheby's is registered to collect sales tax in the states of New York and California, USA. In the event that Sotheby's ships items for a purchaser in this sale to a destination within New York State USA, or California State USA, Sotheby's is obliged to collect the respective state's sales or use tax on the total purchase price and shipping costs, including insurance, of such items, regardless of the country in which the purchaser resides or is a citizen. Where the purchaser has provided Sotheby's with a valid Resale Exemption Certificate prior to the release of the property, sales and use tax will not be charged. Clients to whom this tax might apply are advised to contact the Post Sale Manager listed in the front of this catalogue before arranging shipping.

CONDITIONS OF BUSINESS FOR BUYERS

1. INTRODUCTION

(a) Sotheby's and Sellers' contractual relationship with prospective Buyers is governed by:

- (i) these Conditions of Business;
- (ii) the Conditions of Business for Sellers displayed in the saleroom and which are available upon request from Sotheby's UK salerooms or by telephoning +44 (0)20 7293 6152;
- (iii) Sotheby's Authenticity Guarantee as printed in the sale catalogue;
- (iv) any additional notices and terms printed in the sale catalogue, including Buying at Auction and,
- (v) in respect of online bidding via the internet, the BIDnow Conditions on the Sotheby's website, in each case as amended by any saleroom notice or auctioneer's announcement at the auction.

(b) As auctioneer, Sotheby's acts as agent for the Seller. A sale contract is made directly between the Seller and the Buyer. However, Sotheby's may own a lot (and in such circumstances acts in a principal capacity as Seller) and/or may have a legal, beneficial or financial interest in a lot as a secured creditor or otherwise.

2. COMMON TERMS IN THESE CONDITIONS OF BUSINESS:

Bidder is any person considering, making or attempting to make a bid, by whatever means, and includes Buyers;

Buyer is the person who makes the highest bid or offer accepted by the auctioneer, and includes such person's principal when bidding as agent;

Buyer's Expenses are any costs or expenses due to Sotheby's from the Buyer and any Artist's Resale Right levy payable in respect of the sale of the Property, including an amount in respect of any applicable VAT thereon;

Buyer's Premium is the commission payable by the Buyer on the Hammer Price

at the rates set out in Buying at Auction; **Counterfeit** is as defined in Sotheby's Authenticity Guarantee; **Hammer Price** is the highest bid accepted by the auctioneer by the fall of the hammer (in the case of wine, as apportioned pro-rata by reference to the number of separately identified items in that lot), or in the case of a post-auction sale, the agreed sale price; **Purchase Price** is the Hammer Price and applicable Buyer's Premium and VAT; **Reserve** is the (confidential) minimum Hammer Price at which the Seller has agreed to sell a lot; **Seller** is the person offering a lot for sale (including their agent (other than Sotheby's), executors or personal representatives); **Sotheby's** means Sotheby's, the unlimited company which has its registered office at 34-35 New Bond Street, London W1A 2AA; **Sotheby's Company** means both Sotheby's in the USA and any of its subsidiaries (including Sotheby's in London) and Sotheby's Diamonds S.A. and its subsidiaries (in each case "subsidiary" having the meaning of Section 736 of the Companies Act 1985); **VAT** is Value Added Tax at the prevailing rate. Further information is contained in Buying at Auction.

3. DUTIES OF BIDDERS AND OF SOTHEBY'S IN RESPECT OF ITEMS FOR SALE

(a) Sotheby's knowledge in relation to each lot is partially dependent on information provided to it by the Seller, and Sotheby's is not able to and does not carry out exhaustive due diligence on each lot. Bidders acknowledge this fact and accept responsibility for carrying out inspections and investigations to satisfy themselves as to the lots in which they may be interested.

(b) Each lot offered for sale at Sotheby's is available for inspection by Bidders prior to the sale. Sotheby's accepts bids on lots solely on the basis that Bidders (and independent experts on their behalf, to the extent appropriate given the nature and value of the lot and the Bidder's own expertise) have fully inspected the lot prior to bidding and have satisfied themselves as to both the condition of the lot and the accuracy of its description.

(c) Bidders acknowledge that many lots are of an age and type which means that they are not in perfect condition. All lots are offered for sale in the condition they are in at the time of the auction (whether or not Bidders are in attendance at the auction). Condition reports may be available to assist when inspecting lots. Catalogue descriptions and condition reports may on occasions make reference to particular imperfections of a lot, but Bidders should note that lots may have other faults not expressly referred to in the catalogue or condition report. Illustrations are for identification purposes only and will not convey full information as to the actual condition of lots.

(d) Information provided to Bidders in respect of any lot, including any estimate, whether written or oral and including information in any catalogue, condition or other report, commentary or valuation, is not a representation of fact but rather

is a statement of opinion genuinely held by Sotheby's. Any estimate may not be relied on as a prediction of the selling price or value of the lot and may be revised from time to time in Sotheby's absolute discretion.

(e) No representations or warranties are made by Sotheby's or the Seller as to whether any lot is subject to copyright or whether the Buyer acquires copyright in any lot.

(f) Subject to the matters referred to in Conditions 3(a) to 3(e) above and to the specific exclusions contained at Condition 4 below, Sotheby's shall exercise such reasonable care when making express statements in catalogue descriptions or condition reports as is consistent with its role as auctioneer of lots in the sale to which these Conditions relate, and in the light of (i) the information provided to it by the Seller; (ii) scholarship and technical knowledge; and (iii) the generally accepted opinions of relevant experts, in each case at the time any such express statement is made.

4. EXCLUSIONS AND LIMITATIONS OF LIABILITY TO BUYERS

(a) Sotheby's shall refund the Purchase Price to the Buyer in circumstances where it deems that the lot is a Counterfeit and each of the conditions of the Authenticity Guarantee has been satisfied.

(b) In the light of the matters in Condition 3 above and subject to Conditions 4(a) and 4(e), neither any Sotheby's Company nor the Seller:

(i) is liable for any errors or omissions in information provided to Bidders by Sotheby's (or any Sotheby's Company), whether orally or in writing, whether negligent or otherwise, except as set out in Condition 3(f) above;

(ii) gives any guarantee or warranty to Bidders and any implied warranties and conditions are excluded (save in so far as such obligations cannot be excluded by law) other than the express warranties given by the Seller to the Buyer in Condition 2 of the Sellers' Conditions of Business;

(iii) accepts responsibility to any Bidders in respect of acts or omissions (whether negligent or otherwise) by Sotheby's in connection with the conduct of auctions or for any matter relating to the sale of any lot.

(c) Unless Sotheby's owns a lot offered for sale, it is not responsible for any breach of these conditions by the Seller.

(d) Without prejudice to Condition 4(b), any claim against Sotheby's or the Seller by a Bidder is limited to the Purchase Price with regard to that lot. Neither Sotheby's nor the Seller shall under any circumstances be liable for any consequential losses.

(e) None of this Condition 4 shall exclude or limit Sotheby's liability in respect of any fraudulent misrepresentation made by Sotheby's or the Seller, or in respect of death or personal injury caused by the negligent acts or omissions of Sotheby's or the Seller.

5. BIDDING AT AUCTION

(a) Sotheby's has absolute discretion to refuse admission to the auction. Bidders must complete a Paddle Registration Form and supply such information and references as required by Sotheby's. Bidders act as principal unless they have Sotheby's prior written consent to bid as agent for another party. Bidders are personally liable for their bid and are jointly and severally liable with their principal if bidding as agent.

(b) Sotheby's advises Bidders to attend the auction but will seek to carry out absentee written bids which are in pounds sterling and, in Sotheby's opinion, clear and received sufficiently in advance of the sale of the lot, endeavouring to ensure that the first received of identical written bids has priority.

(c) Where available, written, telephone and online bids are offered as an additional service for no extra charge, at the Bidder's risk and shall be undertaken with reasonable care subject to Sotheby's other commitments at the time of the auction; Sotheby's therefore cannot accept liability for failure to place such bids save where such failure is unreasonable. Telephone and online bids may be recorded. Online bids ("BIDnow") are made subject to the BIDnow Conditions available on the Sotheby's website or upon request. The BIDnow Conditions apply in relation to online bids, in addition to these Conditions of Business.

6. CONDUCT OF THE AUCTION

(a) Unless otherwise specified, all lots are offered subject to a Reserve, which shall be no higher than the low presale estimate at the time of the auction.

(b) The auctioneer has discretion at any time to refuse any bid, withdraw any lot, re-offer a lot for sale (including after the fall of the hammer) if he believes there may be error or dispute, and take such other action as he reasonably thinks fit.

(c) The auctioneer will commence and advance the bidding at levels and in increments he considers appropriate and is entitled to place a bid or series of bids on behalf of the Seller up to the Reserve on the lot, without indicating he is doing so and whether or not other bids are placed.

(d) Subject to Condition 6(b), the contract between the Buyer and the Seller is concluded on the striking of the auctioneer's hammer, whereupon the Buyer becomes liable to pay the Purchase Price.

(e) Any post-auction sale of lots offered at auction shall incorporate these Conditions as if sold in the auction.

7. PAYMENT AND COLLECTION

(a) Unless otherwise agreed, payment of the Purchase Price for a lot and any Buyer's Expenses are due by the Buyer in pounds sterling immediately on conclusion of the auction (the "Due Date") notwithstanding any requirements for export, import or other permits for such lot.

(b) Title in a purchased lot will not pass until Sotheby's has received the Purchase Price and Buyer's Expenses for that lot in

cleared funds. Sotheby's is not obliged to release a lot to the Buyer until title in the lot has passed and appropriate identification has been provided, and any earlier release does not affect the passing of title or the Buyer's unconditional obligation to pay the Purchase Price and Buyer's Expenses.

(c) The Buyer is obliged to arrange collection of purchased lots no later than thirty (30) calendar days after the date of the auction. Purchased lots are at the Buyer's risk (and therefore their sole responsibility for insurance) from the earliest of i) collection or ii) the thirty-first calendar day after the auction. Until risk passes, Sotheby's will compensate the Buyer for any loss or damage to the lot up to a maximum of the Purchase Price paid. Buyers should note that Sotheby's assumption of liability for loss or damage is subject to the exclusions set out in Condition 6 of the Conditions of Business for Sellers.

(d) For all items stored by a third party and not available for collection from Sotheby's premises, the supply of authority to release to the Buyer shall constitute collection by the Buyer.

(e) All packing and handling is at the Buyer's risk. Sotheby's will not be liable for any acts or omissions of third party packers or shippers.

(f) The Buyer of any firearm is solely responsible for obtaining all valid firearm or shotgun certificates or certificates of registration as a firearms dealer, as may be required by the regulations in force in England and Wales or Scotland (as applicable) relating to firearms or other weapons at the time of the sale, and for complying with all such regulations, whether or not notice of such is published in the Sale Catalogue. Sotheby's will not deliver a firearm to a Buyer unless the Buyer has first supplied evidence to Sotheby's satisfaction of compliance with this Condition.

8. REMEDIES FOR NON-PAYMENT

Without prejudice to any rights the Seller may have, if the Buyer without prior agreement fails to make payment for the lot within five days of the auction, Sotheby's may in its sole discretion (having informed the Seller) exercise one or more of the following remedies:

(a) store the lot at its premises or elsewhere at the Buyer's sole risk and expense;

(b) cancel the sale of the lot;

(c) set off any amounts owed to the Buyer by a Sotheby's Company against any amounts owed to Sotheby's by the Buyer in respect of the lot;

(d) apply any payments made to Sotheby's by the Buyer as part of the Purchase Price and Buyer's expenses towards that or any other lot purchased by the Buyer, or to any shortfall on the resale of any lot pursuant to paragraph (h) below, or to any damages suffered by Sotheby's as a result of breach of contract by the Buyer;

(e) reject future bids from the Buyer or render such bids subject to payment of a deposit;

(f) charge interest at 6% per annum above HSBC Bank plc Base Rate from the Due Date to the date the Purchase Price and relevant Buyer's Expenses are received in cleared funds;

(g) exercise a lien over any of the Buyer's property which is in the possession of a Sotheby's Company. Sotheby's shall inform the Buyer of the exercise of any such lien and within 14 days of such notice may arrange the sale of such property and apply the proceeds to the amount owed to Sotheby's;

(h) resell the lot by auction or private sale, with estimates and reserves at Sotheby's discretion. In the event such resale is for less than the Purchase Price and Buyer's Expenses for that lot, the Buyer will remain liable for the shortfall together with all costs incurred in such resale;

(i) commence legal proceedings to recover the Purchase Price and Buyer's Expenses for that lot, together with interest and the costs of such proceedings on a full indemnity basis; or

(j) release the name and address of the Buyer to the Seller to enable the Seller to commence legal proceedings to recover the amounts due and legal costs. Sotheby's will take reasonable steps to notify the Buyer prior to releasing such details to the Seller.

9. FAILURE TO COLLECT PURCHASES

(a) If the Buyer pays the Purchase Price and Buyer's Expenses but fails to collect a purchased lot within thirty (30) calendar days of the auction, the lot will be stored at the Buyer's expense (and risk) at Sotheby's or with a third party.

(b) If a purchased lot is paid for but not collected within six months of the auction, the Buyer authorises Sotheby's, having given notice to the Buyer, to arrange a resale of the item by auction or private sale, with estimates and reserves at Sotheby's discretion. The proceeds of such sale, less all costs incurred by Sotheby's, will be forfeited unless collected by the Buyer within two years of the original auction.

10. EXPORT AND PERMITS

It is the Buyer's sole responsibility to identify and obtain any necessary export, import, firearm, endangered species or other permit for the lot. Any symbols or notices in the sale catalogue reflect Sotheby's reasonable opinion at the time of cataloguing and offer Bidders general guidance only. Without prejudice to Conditions 3 and 4 above, Sotheby's and the Seller make no representations or warranties as to whether any lot is or is not subject to export or import restrictions or any embargoes. The denial of any permit or licence shall not justify cancellation or rescission of the sale contract or any delay in payment.

11. GENERAL

(a) All images and other materials produced for the auction are the copyright of Sotheby's, for use at Sotheby's discretion.

(b) Notices to Sotheby's should be in writing and addressed to the department

in charge of the sale, quoting the reference number specified at the beginning of the sale catalogue. Notices to Sotheby's clients shall be addressed to the last address formally notified by them to Sotheby's.

(c) Should any provision of these Conditions of Business be held unenforceable for any reason, the remaining provisions shall remain in full force and effect.

(d) These Conditions of Business are not assignable by any Buyer without Sotheby's prior written consent, but are binding on Buyers' successors, assigns and representatives. No act, omission or delay by Sotheby's shall be deemed a waiver or release of any of its rights.

(e) The Contracts (Rights of Third Parties) Act 1999 is excluded by these Conditions of Business and shall not apply to any contract made pursuant to them.

(f) The materials listed in Condition 1(a) above set out the entire agreement and understanding between the parties with respect to the subject matter hereof. It is agreed that, save in respect of liability for fraudulent misrepresentation, no party has entered into any contract pursuant to these terms in reliance on any representation, warranty or undertaking which is not expressly referred to in such materials.

12. DATA PROTECTION

Sotheby's will use information provided by its clients (or which Sotheby's otherwise obtains relating to its clients) for the provision of auction and other art-related services, loan and insurance services, client administration, marketing and otherwise to manage and operate its business, or as required by law. This will include information such as the client's name and contact details, proof of identity, financial information, records of the client's transactions, and preferences. Some gathering of information about Sotheby's clients will take place using technical means to identify their preferences in order to provide a higher quality of service to them. Sotheby's may also disclose the client information to other Sotheby's Companies and/or third parties acting on their behalf to provide services for these purposes listed above.

Sometimes, Sotheby's may also disclose this information to carefully selected third parties for their own marketing purposes. If you do not wish your details to be used for this purpose, please email enquiries@sothebys.com.

If the client provides Sotheby's with information that is defined by European data protection laws as "sensitive", the client agrees that it may be used for the purposes set out above.

In the course of these disclosures, personal data collected in the European Economic Area may be disclosed to countries outside the European Economic Area. Although such countries may not have legislation that protects a client's personal information, Sotheby's shall take reasonable steps to keep such information secure and in accordance with European

data protection principles. By agreeing to these Conditions of Business, the client is agreeing to such disclosure.

Please be aware that Sotheby's may film auctions or other activities on Sotheby's premises and that such recordings may be transmitted over the Internet via Sotheby's website. Telephone bids may be recorded.

Under European data protection laws, a client may object, by request and free of charge, to the processing of their information for certain purposes, including direct marketing, and may access and rectify personal data relating to them and may obtain more information about Sotheby's data protection policies by writing to Sotheby's, 34-35 New Bond Street, London W1A 2AA, or 1334 York Avenue, New York, NY 10021. Attn: Compliance, or emailing: enquiries@sothebys.com.

13. LAW AND JURISDICTION

Governing Law These Conditions of Business and all aspects of all matters, transactions or disputes to which they relate or apply (including any online bids in the sale to which these Conditions apply) shall be governed by and interpreted in accordance with English law.

Jurisdiction For the benefit of Sotheby's, all Bidders and Sellers agree that the Courts of England are to have exclusive jurisdiction to settle all disputes arising in connection with all aspects of all matters or transactions to which these Conditions of Business relate or apply. All parties agree that Sotheby's shall retain the right to bring proceedings in any court other than the Courts of England.

Service of Process All Bidders and Sellers irrevocably consent to service of process or any other documents in connection with proceedings in any court by facsimile transmission, personal service, delivery by mail or in any other manner permitted by English law, the law of the place of service or the law of the jurisdiction where proceedings are instituted, at the last address of the Buyer or Seller known to Sotheby's or any other usual address.

SOTHEBY'S GREENFORD PARK STORAGE AND COLLECTION INFORMATION

Smaller items can normally be collected from New Bond Street, however large items may be sent to Sotheby's Greenford Park Fine Art Storage Facility. If you are in doubt about the location of your purchases please contact the Sale Administrator (see front of catalogue) prior to collection.

COLLECTION FROM NEW BOND STREET

Lots will be released to you or your authorised representative when full and cleared payment has been received by Sotheby's, together with settlement of any removal, interest, handling and storage charges thereon, appropriate identification has been provided and a release note has been produced by our Post Sale Service Group at New Bond

Street, who are open Monday to Friday 9.00am to 5.00pm.

Any purchased lots that have not been collected within 30 days from the date of the auction will be subject to handling and storage charges at the rates set out below. In addition all purchased lots that have not been collected from our New Bond Street premises within 90 days of the auction will be transferred to Sotheby's Greenford Park Fine Art Storage Facility.

Collect your property from:
Sotheby's Property Collection

Opening hours:
Monday to Friday 9.00am to 5.00pm
34-35 New Bond Street
London, W1A 2AA
Tel: +44 (0)20 7293 5358
Fax: +44 (0)20 7293 5933

COLLECTION FROM SOTHEBY'S GREENFORD PARK FINE ART STORAGE FACILITY

Lots will be released to you or your authorised representative when full and cleared payment has been received by Sotheby's, together with settlement of any removal, interest, handling and storage charges thereon, appropriate identification has been provided and a release note has been produced by our Post Sale Service Group at New Bond Street, who are open Monday to Friday 9.00am to 5.00pm.

Purchasers must ensure that their payment has been cleared prior to collection and that a release note has been forwarded to Sotheby's Greenford Park by our Post Sale Service Group at Sotheby's New Bond Street. Buyers who have established credit arrangements with Sotheby's may collect purchases prior to payment, although a release note is still required from our Post Sale Service Group as above.

Any purchased lots that have not been collected within 30 days from the date of the auction will be subject to handling and storage charges at the rates set out below.

Collect your property from: **Sotheby's Greenford Park Fine Art Storage Facility**

Opening hours:
Monday to Friday 8.30am to 4.30pm
Sotheby's Greenford Park,
13 Ockham Drive, Greenford, Middlesex, UB6 0FD
Tel: +44 (0)20 7293 5600
Fax: +44 (0)20 7293 5625

ROUTE GUIDANCE TO SOTHEBY'S GREENFORD PARK FINE ART STORAGE FACILITY

From Bond Street head towards Regents Park, take the A40 Marylebone Road to Western Avenue. Take the exit off the A40 signposted Greenford A4127. At the roundabout take the third exit signposted Harrow and Sudbury, A4127 onto Greenford Road. Go under the railway bridge and at the traffic lights turn first left into Rockware Avenue. At the T Junction turn right onto Oldfield Lane North and then left into Ockham Drive. Stop at the security barrier and say you are visiting Sotheby's. Once cleared, travel 300 yards down the road and Unit 13 is situated on the left hand side.

STORAGE CHARGES

Any purchased lots that have not been collected within 30 days from the date of the auction will be subject to handling and storage charges at the following rates:

Small items (such as jewellery, watches, books or ceramics): handling fee of £20 per lot plus storage charges of £2 per lot per day.

Medium items (such as most paintings or small items of furniture): handling fee of £30 per lot plus storage charges of £4 per lot per day.

Large items (items that cannot be lifted or moved by one person alone): handling fee of £40 per lot plus storage charges of £8 per lot per day.

Oversized items (such as monumental sculptures): handling fee of £80 per lot plus storage charges of £10 per lot per day.

A lot's size will be determined by Sotheby's on a case by case basis (typical examples given above are for illustration purposes only).

All charges are subject to VAT, where applicable. All charges are payable to Sotheby's at our Post Sale Service Group in New Bond Street.

Storage charges will cease for purchased lots which are shipped through Sotheby's Shipping Logistics from the date on which we have received a signed quote acceptance from you.

LIABILITY FOR LOSS OR DAMAGE

Buyers are reminded that Sotheby's accepts liability for loss or damage to lots for a maximum period of thirty (30) calendar days after the date of the auction. Please refer to Condition 7 of the Conditions of Business for Buyers.

SOTHEBY'S AUTHENTICITY GUARANTEE FOR JEWELLERY

If Sotheby's sells any gemstone or pearls which the Buyer subsequently shows to Sotheby's reasonable satisfaction not to be genuine or of natural origin, subject to the terms below Sotheby's will set aside the sale and refund to the Buyer the total amount paid by the Buyer to Sotheby's for such gemstones or pearls, in the currency of the original sale.

This Guarantee is provided for a period of twenty one (21) days after the date of the relevant auction, is solely for the benefit of the Buyer and may not be transferred to any third party. To be able to claim under this Guarantee, the Buyer must:-

- (i) notify Sotheby's in writing within such 21 day period of the reasons for not believing the gemstones or pearls to be genuine or of natural origin, specifying the lot number, date of the auction at which it was purchased; and
- (ii) return the item to Sotheby's in the same condition as at the date of sale to the Buyer and be able to transfer good title in the item, free from any third party claims arising after the date of the sale.

Sotheby's has discretion to waive any of the above requirements. Sotheby's may require the Buyer to obtain at the Buyer's cost the reports of two independent and recognised experts in the field, mutually

acceptable to Sotheby's and the Buyer. Sotheby's shall not be bound by any reports produced by the Buyer, and reserves the right to seek additional expert advice at its own expense. In the event Sotheby's decides to rescind the sale under this Guarantee, it may refund to the Buyer the reasonable costs of up to two mutually approved independent expert reports.

4/08 NBS_GUARANTEE.JEWELS

IMPORTANT NOTICES

ESTIMATES IN US DOLLARS AND EUROS

As a guide to potential buyers, estimates for this sale are also shown in US Dollars and Euros. The estimates printed in the catalogue in Pounds Sterling have been converted at the following rate, which was current at the time of printing. These estimates may have been rounded:

£1 = US\$1.32

£1 = €1.12

By the date of the sale this rate is likely to have changed, and buyers are recommended to check before bidding.

During the sale Sotheby's may provide a screen to show currency conversions as bidding progresses. This is intended for guidance only and all bidding will be in Pounds Sterling. Sotheby's is not responsible for any error or omissions in the operation of the currency converter.

Payment for purchases is due in Pounds Sterling, however the equivalent amount in any other currency will be accepted at the rate prevailing on the day that payment is received in cleared funds.

Settlement is made to vendors in the currency in which the sale is conducted, or in another currency on request at the rate prevailing on the day that payment is made by Sotheby's.

Photographs do not show pieces to scale.

LIABILITY FOR LOSS OR DAMAGE FOR PURCHASED LOTS

Purchasers are requested to arrange clearance as soon as possible and are reminded that Sotheby's accepts liability for loss or damage to lots for a maximum period of thirty (30) calendar days following the date of the auction. Please refer to condition 7 of the Conditions of Business for Buyers.

SAFETY AT SOTHEBY'S

Sotheby's is concerned for your safety while you are on our premises and we endeavour to display items safely so far as is reasonably practicable. Nevertheless, should you handle any items on view at our premises, you do so at your own risk.

Some items can be large and/or heavy and can be dangerous if mishandled. Should you wish to view or inspect any items more closely please ask for assistance from a member of Sotheby's staff to ensure your safety and the safety of the property on view.

Some items on view may be labelled "PLEASE DO NOT TOUCH". Should you wish to view these items you must ask for assistance from a member of Sotheby's staff who will be pleased to assist you. Thank you for your co-operation.

AUTHENTICITY GUARANTEE

All lots are offered subject to the Sotheby's Authenticity Guarantee and Conditions of Business for Buyers, which are set forth in this catalogue and Conditions of Business for Sellers, which are available from Sotheby's offices on request. Prospective bidders should review the Conditions of Business, Authenticity Guarantee and the Buying at Auction section in the printed catalogue.

VAT INFORMATION

For all lots marked with a †, ‡, α or Ω please refer to the VAT Information pages at the back of the catalogue.

TREATMENT & CONDITION OF GEMSTONES

Traditionally, gemstones have been treated by a variety of techniques to enhance colour and generally to improve their appearance. Typically, rubies and sapphires have been heat treated and emeralds have been treated by oil or resin to improve colour and clarity. These or other techniques, such as dyeing, irradiation, coating and impregnation, may be used on other gemstones.

Although it is widely believed that heat treatments are permanent, purchasers should assume that any treatment may not be permanent and that over time special care of the stone may be required. Prospective purchasers are reminded that, unless the catalogue description specifically states that a stone is natural, we have assumed that some form of treatment may have been used and that such treatment may not be permanent. Our resale estimates reflect this assumption.

To the extent that Sotheby's has laboratory reports containing specific information on the treatment of a stone, these reports are made available for review by potential purchasers. Available reports from internationally recognised gemmological laboratories will be noted in the description of the item. New forms of treatments and new scientific methods to discern them are constantly being developed. Consequently, there may be a lack of consensus among laboratories as to whether gemstones have been treated, the extent of the treatment or the permanence of the treatment.

References in the catalogue descriptions to certificates or reports issued by gemmological laboratories are included only for the information of bidders, and Sotheby's accepts no responsibility for the accuracy, terms or information contained in such certificates or reports.

Statements in the catalogue regarding the condition of lots in this sale usually appear in the description. However, the absence of any such reference does not imply that a lot is in perfect condition or completely free from wear or imperfections. Sotheby's will be pleased to offer condition reports on all lots of the sale to potential purchasers. Please call the jewellery representatives as set forth in the front of the catalogue.

CERTIFICATES OF AUTHENTICITY

Various manufacturers may not issue certificates of authenticity upon request.

Except as specifically noted in the catalogue, Sotheby's will not be required to furnish the purchaser with a certificate of authenticity from the manufacturer at any time. Unless the requirements for a rescission of the sale under the Terms of Guarantee are satisfied, the failure of a manufacturer to issue a certificate will not constitute grounds to rescind the sale.

WRISTWATCHES

All wristwatches are sold as viewed and cannot be returned on the grounds that repairs have been carried out or parts supplied by anyone other than the named makers. There will be no viewing of watches and wristwatches on the day of sale.

Watches may not be taken apart whilst on view. Prospective buyers or their agents wishing to do so should make an appointment with the Watch Department for a private view the week before the sale. Although condition reports may be given on request, such reports are statements of opinion only and may not specify all mechanical replacements or imperfections in the movement, case and dial. All dimensions are approximate.

Watches in water-resistant cases have been opened to examine movements but no warranties are made that the watches are currently water-resistant.

Please note that we do not guarantee the authenticity of any individual component parts, such as wheels, hands, crowns, crystals, screws, bracelets and leather bands, since subsequent repairs and restoration work may have resulted in the replacement of original parts.

Please be advised that straps made of material derived from endangered or otherwise protected species (ie. alligator and crocodile) are not sold with the watches and are for display purposes only. We reserve the right to remove these straps prior to shipping.

Furthermore, in reference to watch bands, we do not guarantee the material of manufacture. Please be advised that the purchaser will be responsible for complying with any applicable export and import matters, particularly in relation to endangered species and the United States Department of Fish and Wildlife Services.

We make no representation or warranty as to the condition of any lot sold.

R Important Notice regarding Importation into the United States of Rolex Watches

Sotheby's cannot arrange for the delivery of Rolex watches to the United States because U.S. laws restricts the import of Rolex watches. The buyer or a designated agent may collect the property in the country of sale.

10/16 NBS_NOTICE.JEWELS € US\$

GLOSSARY OF TERMS

As a convenience to our clients, we include the following glossary which includes definitions of certain terms used in this catalogue. Please read carefully the terms of the Authenticity Guarantee and the Conditions of Business for Buyers set out in this catalogue, in particular Conditions 3 and 4.

SIGNATURES

CAPITALISED HEADING

When the maker's name appears in the CAPITALISED HEADING in the catalogue description, in Sotheby's qualified opinion, the piece is by the named jeweller.

NAME OF JEWELLER

When we state the name of a maker in the catalogue description below the CAPITALISED HEADING, we mean that, in Sotheby's qualified opinion, although unsigned, the piece is by the named jeweller.

MOUNTED BY

When we state in the catalogue description below the CAPITALISED HEADING "Mounted by _____", we mean that, in Sotheby's qualified opinion, only the mount is by the jeweller, and the gemstones were not supplied by the jeweller or the piece has been altered in some way after its manufacture.

DIAMOND CLARITY

Clarity grading follows a hierarchy describing the extent of the impurities in a diamond. All clarity grading is carried out under a 10x magnification. The more impurities in a diamond the lower the price per carat.

IF (INTERNALLY FLAWLESS)

No inclusions and only insignificant blemishes

VVS1 AND VVS2 (VERY VERY SLIGHT INCLUSION)

Extremely difficult to see, visible only from the back of the stone, or small and shallow enough to be removed easily by repolishing

VS1 AND VS2 (MINOR INCLUSIONS)

Still difficult to see with the untrained eye

S11 AND S12 (NOTICEABLE INCLUSIONS)

Easy (S11) or very easy (S12) to see with a 10x lens. When these have been located with a 10x lens, look at the stone with the naked eye and the inclusions can sometimes be spotted

I1, I2, I3 (OBVIOUS INCLUSIONS)

May be eye-visible face-up without the aid of a lens. In I3, they may threaten the stone's durability

RING SIZES

Metric	French/Japanese	English	USA
37.8252	—	A	1/2
38.4237	—	A1/2	3/4
39.0222	—	B	1
39.6207	—	B1/2	1 1/4
40.2192	—	C	1 1/2
40.8177	—	C1/2	1 3/4
41.4162	1	D	2°
42.0147	2	D1/2	2 1/4
42.6132	—	E	2 1/2
43.2117	3	E1/2	2 3/4
43.8102	4	F	3
44.4087	—	F1/2	3 1/4
45.0072	5	G	3 1/2
45.6057	—	G1/2	3 3/4
46.2042	6	H	4
46.8027	—	H1/2	4 1/4
47.4012	7	I	4 1/2
47.9997	8	I1/2	4 3/4
48.5982	—	J	5
49.1967	9	J1/2	5 1/4
49.7952	10	K	5 1/2
50.3937	—	K1/2	5 3/4
50.9922	11	L	6
51.5907	—	L1/2	6 1/4
52.1892	12	M	6 1/2
52.7877	13	M1/2	6 3/4
53.4660	—	N	7
54.1044	14	N1/2	7 1/4
54.7428	15	O	7 1/2
55.3812	—	O1/2	7 3/4
56.0196	16	P	8
56.6580	—	P1/2	8 1/4
57.2964	17	Q	8 1/2
57.9348	18	Q1/2	8 3/4
58.5732	—	R	9
59.2116	19	R1/2	9 1/4
59.8500	20	S	9 1/2
60.4884	—	S1/2	9 3/4
61.1268	21	T	10
61.7652	22	T1/2	10 1/4
62.4026	—	U	10 1/2
63.0420	23	U1/2	10 3/4
63.6804	24	V	11
64.3188	—	V1/2	11 1/4
64.8774	25	W	11 1/2
65.4759	—	W1/2	11 3/4
66.0744	26	X	12
66.6729	—	X1/2	12 1/4
67.2714	—	Y	12 1/2
67.8699	—	Y1/2	12 3/4
68.4684	—	Z	13

COLOUR GRADING

Colour grading follows a scale describing the "whiteness" or absence of secondary colour in a white diamond. At the top of the scale a diamond will appear white, and at the bottom yellowish or brownish.

GIA - D, E, F

The top colour grades, D, E, F, describe a diamond which appears colourless against a white background.

GIA - G, H, I

In near colourless diamonds, G, H, I, there is a slight trace of colour which will not be apparent to the untrained eye. Stones 0.50ct or less will look colourless.

GIA - J, K, L

Diamonds graded J, K, L, will have noticeable traces of colour. Small stones in this range will 'face up' colourless when mounted but larger stones will be tinted.

GIA - M - Z

Diamonds graded M-Z will display a yellowish tint even to the untrained eye.

FANCY COLOURS

GIA Z+

Z+ colour grade indicates that the diamond is of fancy colour and therefore fall into a different price bracket.

4/15 NBS_GLOS_JEWELS

INTERNATIONAL DEPARTMENTS

For a full listing of our offices and salerooms worldwide with detailed information on all of Sotheby's services, visit sothebys.com

David Bennett
Chairman
International Jewellery Division

Daniela Mascetti
Senior Specialist, International
Worldwide Head of Scholarship

Gary Schuler
Chairman, North and South America

Brett O'Connor
Senior Specialist, International

Patti Wong
Chairman, Sotheby's Diamonds

Chin Yeow Quek
Chairman, Asia

Maria Kelly
Deputy Managing Director,
Luxury and Lifestyle Division

Andres White Correal
Director of International
Business Development

Emma Paleschi
Head of Jewellery Business, Europe

Rebecca Spencer
Business Director, Geneva

Yang Bu
Business Director, North America

Scott Roworth
Business Director, Asia

EUROPE

Geneva

David Bennett
Daniela Mascetti
Brett O'Connor
Olivier Wagner
Benoit Repellin
Nicholas Rayner
Senior Consultant, Europe
Prince Abdul Aziz Toussoun
Associate, Europe
+41 22 908 4849

London

Jessica Wyndham
Justin Roberts
Kristian Spofforth
Andres White Correal
+44 (0)20 7293 6409

Milan

Sara Miconi
+39 02 295 00201
Daniela Mascetti
+41 22 908 4849

Paris

Gabriella Mantegani
Claire de Truchis-Lauriston
+33 1 5305 5337

Amsterdam

Albertine Verlinde
+31 20 550 2204

Brussels

Marianna Lora
+32 2 627 7198

Lugano

Iris Fabbri
+41 91 993 3060

Madrid

Andres White Correal
+34 91 576 5714

Monaco

Douglas Walker
+377 93 30 8880

Munich

Heinrich Graf von Spreti
+49 89 291 31 51

Rome

Luisa Lepri
+39 06 699 41791

Tel Aviv

Sigal Mordechai
+972 3 560 1666

Vienna

Andrea Jungmann
+43 1 512 4772

NORTH AMERICA

New York

Gary Schuler
Carol Elkins
Esther Tadjiev
Robin Wright
Catharine Becket
Quig Bruning
Kendall Reed
Nikita Manilal
+1 212 606 7392

SOTHEBY'S DIAMONDS
+44 (0)20 7293 6430

West

Carol Elkins
+1 415 772 9027

ASIA

Hong Kong

Chin Yeow Quek
Flora Wong
Shanne Ng
Yvonne Chu
Julia Liu
+852 2822 8115

SOTHEBY'S DIAMONDS
Lisa Chow
Joanne Ma
+852 2822 8113

CHINA

Beijing

Lei Tang
+86 10 6408 8890

Shanghai

Fiona Zhang
+86 21 6288 7500

Indonesia

Jasmine Prasetyo
+62 21 5797 3603

Japan

Aki Uemura
Maiko Ichikawa
+81 3 3230 2755

Malaysia

Walter Cheah ‡
+60 12 208 3917

Philippines

Angela Hsu ‡
+63 917 815 0075

Singapore

Esther Seet
+65 6732 8239

Taiwan

Wendy Lin
Nicolette Chou
+886 2 2757 6689

Thailand

Wannida Saetieo
+66 2 286 0788

Consultant ‡

FORTHCOMING AUCTIONS

A comprehensive calendar of international auctions, in addition to all sale results, can be viewed at sothebys.com

**MAGNIFICENT JEWELS
AND JADEITE**
3 October 2017
Hong Kong

FINE JEWELS
17 October 2017
New York

**MAGNIFICENT JEWELS AND
NOBLE JEWELS**
15 November 2017
Geneva

BOARD OF DIRECTORS

Tad Smith
**President and
 Chief Executive Officer**

Domenico De Sole
Chairman of the Board

The Duke of Devonshire
Deputy Chairman of the Board

Jessica M. Bibliowicz
 Linus W. L. Cheung
 Kevin Conroy
 Daniel S. Loeb
 Olivier Reza
 Marsha E. Simms
 Diana L. Taylor
 Dennis M. Weibling
 Harry J. Wilson

**SOTHEBY'S
EXECUTIVE MANAGEMENT**

Amy Cappellazzo
**Chairman
 Fine Art Division**

Kevin Ching
**Chief Executive Officer
 Asia**

Adam Chinn
**Chief Operating Officer
 Worldwide**

David Goodman
**Digital Development
 & Marketing Worldwide**

Mike Goss
Chief Financial Officer

Allan Schwartzman
**Chairman
 Fine Art Division**

Karen Sutton
Chief Administrative Officer

Maarten ten Holder
**Global Managing Director
 Luxury & Lifestyle Division**

ADVISORY BOARD

C. Hugh Hildesley
Vice Chairman

Alexis Gregory
Deputy Chairman

Juan Abelló
 Nicolas Berggruen
 Laura M. Cha
 Dr. Alice Y. T. Cheng
 Halit Cingilioğlu
 Henry Cornell
 Michel A. David-Weill
 Ulla Dreyfus-Best
 Frederik J. Duparc
 Jean Marc Etlin
 Serge de Ganay
 Ann Getty
 Charles de Gunzburg
 Ronnie F. Heyman
 Pansy Ho

Prince Aryn Aga Khan
 Jean-Claude Marian
 John L. Marion
 Carlo Perrone
 Donna Patrizia Memmo
 dei Principi Ruspoli
 Rolf Sachs
 Marjorie Susman
 Jean Todt

The Hon. Hilary Weston,
 C.M., O.Ont.

SOTHEBY'S COUNCIL

Robin Woodhead
**Chairman,
 Sotheby's International**

Michael Berger-Sandhofer
Deputy Chairman

Ina Astrup
 Philippe Bertherat
 Lavinia Borromeo
 Jasper Conran
 Paula Cussi
 Oleg Deripaska
 Quinten Dreesmann
 Tania Fares

Yassmin Ghandehari
 Shalini Hinduja
 Catherine Lagrange
 Edward Lee
 Atalanti Martinou
 Batia Ofer

Georg von Opel
 Olivier Widmaier Picasso
 Paulo Pimenta
 Laudomia Pucci Castellano
 David Ross
 Daniel Sachs
 René H. Scharf
 Biggi Schuler-Voith
 Jacques Veyrat

**EUROPEAN
CHAIRMAN'S OFFICE**

Oliver Barker
Chairman, Europe

Helena Newman
Chairman, Europe

Mario Tavella
Chairman, Europe

Dr. Philipp Herzog von Württemberg
Chairman, Europe

Deputy Chairmen

David Bennett
 Claudia Dwek
 Lord Poltimore

Alex Bell
 Jean Fritts
 Edward Gibbs
 George Gordon
 Philip Hook
 Henry Howard-Sneyd
 Caroline Lang
 Pierre Mothes
 Heinrich Graf v. Spreti
 Patricia Wong
 Roxane Zand

UK CHAIRMAN'S OFFICE

Lord Dalmeny
**Chairman
 United Kingdom and Ireland**

Arabella Bishop
 Camilla Carr
 Patrick Dingwall
 Franka Haiderer
 William Lucy
 Angus Milner-Brown
 Wendy Philips

INDEX

ALDO CIPULLO FOR CARTIER 223	ILIAS LALAOUNIS 230, 231
ARCHIBALD KNOX FOR LIBERTY & CO. 34	
ASPREY 245, 259	MAPPIN & WEBB 248
	MARGHERITA BURGNER 275
BAUME & MERCIER 252	MAUBOUSSIN 193
BLACK STARR & FROST 167	MICHAEL YOUNG 261
BOUCHERON 95, 187, 246	MIKIMOTO 109
BREGUET 110	MINOTTO 177
BUCCELLATI 150, 180, 247	MONTURE BOUCHERON 97
BULGARI 203, 204, 218, 238, 254	MONTURE CARTIER 262
CARRINGTON & CO 151	OSCAR HEYMAN & BROTHERS 138
CARTIER 54, 156, 169, 171, 172, 174, 175, 176, 178, 179, 181, 182, 183, 199, 202, 205, 206, 211, 220, 222, 249, 255, 295	POL BURY 145, 147
CHAUMET 239	RENÉ BOIVIN 237
CHOPARD 101, 212	RUBEL FRÈRES 270
CLAUDIO SALOCCHI 140	
	SABBADINI 229
DAMIANI 213	SCAVIA 143
DUNHILL 155	
	TIFFANY & CO. 65
FARAONE 160	
	VAN CLEEF & ARPELS 47, 170, 188, 189, 250, 274
GARRARD & CO. LTD. 58, 186	VERGER FRÈRES 168
GIULIO VERONESI 225	
GIUSEPPE GIROMETTI 22	
GRAFF 127	
GRIMA 137, 146, 157	



In recognition of the high standards of business administration and our compliance with all required customs protocols and procedures, Sotheby's UK has been awarded the European Union Authorised Economic Operator status by Her Majesty's Revenue and Customs.



Sotheby's UK is committed to improving its sustainability, conserving resources and reducing the environmental impact of its various operations. A copy of Sotheby's Environmental Policy is available on request. Main Enquiries: +44 (0)20 7293 5000.

Photography
Jasper Gough
Oscar Giacomini
Catalogue Designer
Lynne Sellers
Colour Editor
Martin Rogers
Production Controller
Victoria Ling





Sotheby's EST. 1744
Collectors gather here.